

2025 September San Juan Islands Cruise

**“Get Ready to Go!”
Meeting**

Only a few Days to Go!

Review Ideas for Making Cruise a Success

Low Expectations: We are going boat-camping on small sailboats, not going on a luxury cruise ship.

Communal Thinking: Reject proprietary thinking; don't stake out territory. Rather, share the resources.

- Example: You can move your sleeping bag to any empty berth to sleep when campers vacate berths.

Use the Land: Camp if you desire (I pay the camping fees). Use on-shore restrooms.

*Work together to
solve problems.*

Think of others.

Self-abnegate.

*Make this trip as
good as possible.*

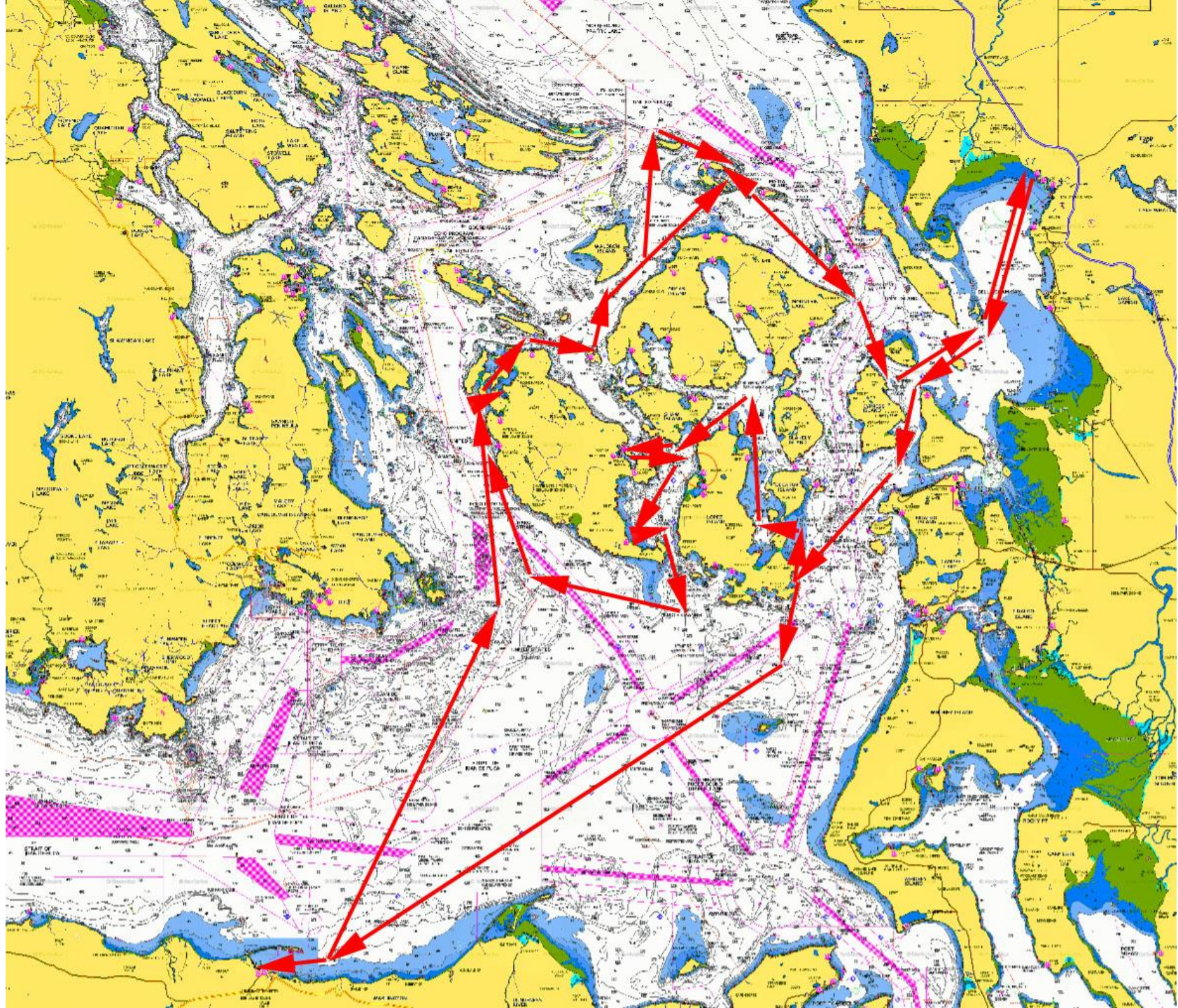
Overnight Destinations

Islands, Marine Parks, Anchorages:

- On Buoys: Watmough Bay (?), Jones Island (?), Patos-Sucia-Matia Islands, Cypress Island
- On Docks: Port Angeles (?), Jones Island (?)
- At Anchor: Watmough Bay (?), Griffin Bay (?), Garrison Bay

Ports:

- Bellingham for pre-departure night, Port Angeles, Friday Harbor (short lunch/shower stop?), Roche Harbor (short lunch/shower stop)



What to Bring, Not Bring

- Minimize
- Only soft bags, NO hard luggage/suitcases.
- Sleeping bag
- If camping: pad, tent?, headlamp/flashlight
 - Backpacking-type gear, not big car-camping gear
- Bunting/fleece jacket, light rain/wind parka.
- 12v chargers, battery packs, cables, for cell phones.
- Boat shoes, maybe water shoes or sandals (for dinghy), maybe inflatable or kayak pfd?
- See charter company list of what to bring.

What Boat are You On (to start)?

We invite you to consider sailing on the other boat for a day.

S/V Windwaker

Leslie (captain), Tracey (safety officer), Johanna, Jill, Blanka, Jason, Bob

S/V Vita Beata

Brian (captain), Josh (safety officer), David, Carol, Alison, Shah, Cathy

Living on the Boats

-Head Use:

(Absolutely no TP in toilet!)

-Music (To listen to music, bring headphones.)

-Water conservation

-Food (Food committee rules!)

Living on the Boats, 2

-Electricity, Conserve (when not on shorepower):

- Microwave/hair dryers – Only OK when at marinas on shorepower; otherwise No!
- Heater Use (Limit) and Fridge (Turn off at night) when not on shorepower.
- Charging phones and other devices OK using AC outlets (Will work when inverter is on).

-Take Showers:

- In ports (We make shower/lunch port stops)
- On swim platforms
- Do NOT use showers in the heads (Will use for storage).

Dinghy Captains

Need 1 dinghy captain, and 1 volunteer, for each boat to move the outboard engine to the dinghy and then back to the stern pulpit.

- Note: It's OK not to bother with the engine and just row the dinghy (good exercise).

Dinghy captains are not our indentured chauffeurs. We will share the dinghy driving, so some of you might want to learn how to use the outboard engines.

Filling Water Tanks

- Please help out.
- Need to fill when in port.
- **IMPERATIVE** to fill the correct tank.

Jobs when Approaching and Leaving Docks

- 3 Dock Line Handlers (Also deploy fenders!)
 - Agility needed to get onto the dock or the boat.
- 1 Helmsman
- Others (2-3) Serve as Roving Protectors Holding an Extra Fender or Cushion.
- Sometimes 1 needs to control dinghy w/boathook.

Jobs Picking up Mooring Buoys

From Bow of Boat (normal method):

- 1 Person with Boat Hook
- 2 People Handling Lines
- 1 Person Signaling to Helmsman
- 1 Helmsman

Alternatives:

- Pick up from stern, or
- Use the dinghy

Jobs When Sailing, Motoring

Navigator (always) – Know where we are on the chart in the chartbook. Check position on chartplotter.

Helmsman (always) – Maintain point of sail when sailing. Understand how to avoid inadvertent jibes.

Crab Pots, Kelp, Logs, Ferries, Boats –
Watch For Them

Jib Sheet Grinders (when sailing)

Main Sheet Grinder (when sailing)

Responsibilities of Boat Captains, Safety Officers, and EVERYONE

- Navigation issues: Look at charts, chartplotter.
- Sailing/Motoring: Do it safely and well.
- Help all members get the experiences they want.
- Help new sailors to learn (if they want).
- Dock and leave docks with minimum risk of damage to the boats and the crew.
- *Show consideration towards everyone!*

Safety

- Inadvertent Jibes
- PFD Use and Availability
- Don't Fall Overboard!
 - What to Do, not to Do, in Man Overboard Situation

Food

Food Committee Report

Pay Food Committee!

- Pay \$70 to Leslie now, or in Bellingham

Other Issues

Any Other Concerns,
Comments, Questions?

Bellingham Carpooling and Arrival

- **Carpool**: Make carpool arrangements if desired.
- **Arrival**: Most arrive at San Juan Sailing on Friday.
 - At least 1 hour before Check-Out time: Captains, Safety Officers arrive.
 - S/V Windwaker Check-Out time, 6:30:
 - **Gate 3, BW12**
 - S/V Vita Beata Check-Out time, 6:30:
 - **Gate 5, C26**
 - Can load boats about 1 hour after check-out time.

Bellingham Departure

- **Departure:**

- Boats depart on Saturday about 9:30-11:00 am.
- Good breakfast available at Web Locker Restaurant, 2 blocks from San Juan Sailing, open at 8:00 am.
- Be at boat by about 9:00 or when the boat captain requests.

- **S/V Vita Beata:**

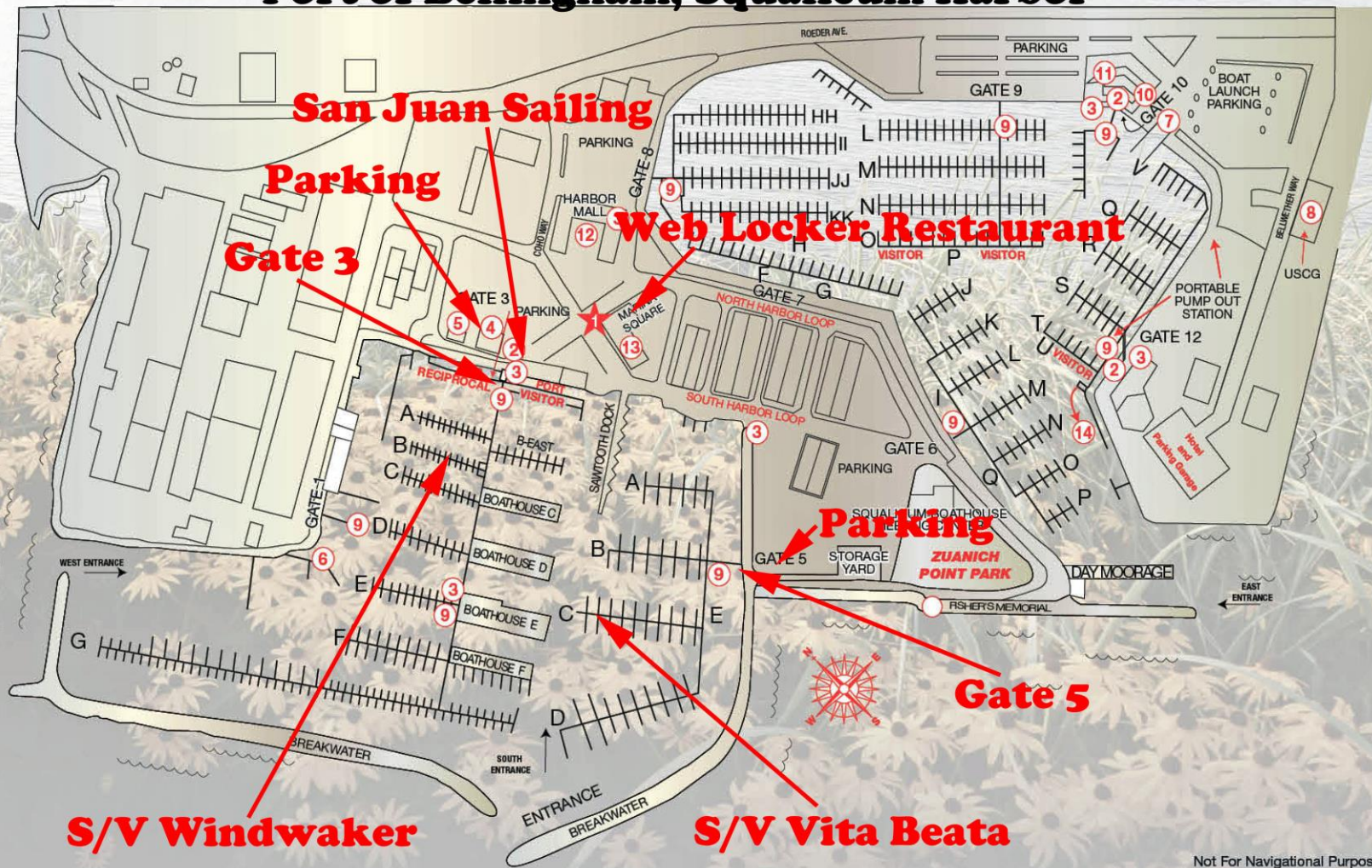
- Vita Beata is making use of 1 hour of free maneuvering practice at 7:30 am.
- Vita Beata crew can participate in practice (recommended) or can also choose to get off the boat by 7:30 to shower, have breakfast. I request that we have several crew on the boat to handle lines during the practice.

Facilities: • Additional Visitor Buoy Moorage Available At Fairhaven District

- ★ Port Office
- ① Laundromat
- ② Restrooms
- ③ Bellingham Y.C.
- ④ Squalicum Y.C.
- ⑤ Fuel Dock
- ⑥ Boat Launch Ramp
- ⑦ Coast Guard Station
- ⑧ Sanitary Pump Outs
- ⑨ Marine Life Tank
- ⑩ Harbor Center
- ⑪ Harbor Mall
- ⑫ Marina Square
- ⑬ Seaplane Dock



Port of Bellingham, Squalicum Harbor



Not For Navigational Purposes