

2023 San Juan Islands and Gulf Islands Cruise

**“Get Ready to Go!”
Meeting**

Only 6 Days to Go!

Money

- Boat Costs per person – You already paid.
- Group Food Costs - \$60 you pay to Leslie in cash. Due NOW if not paid yet.
- Personal Expenses - \$0 to \$???
 - In port you can eat out or make do on the boats.

Review Ideas for Making Cruise a Success

Low Expectations: We are going boat-camping on small sailboats, not going on a luxury cruise ship.

Communal Thinking: Reject proprietary thinking; don't stake our territory. Rather, share the resources.

- Example: You can move your sleeping bag to any empty berth to sleep when campers vacate berths.

Use the Land: Camp if you desire (I pay the camping fees). Use on-shore restrooms.

*Work together to
solve problems.*

Think of others.

Self-abnegate.

*Make this trip as
good as possible.*

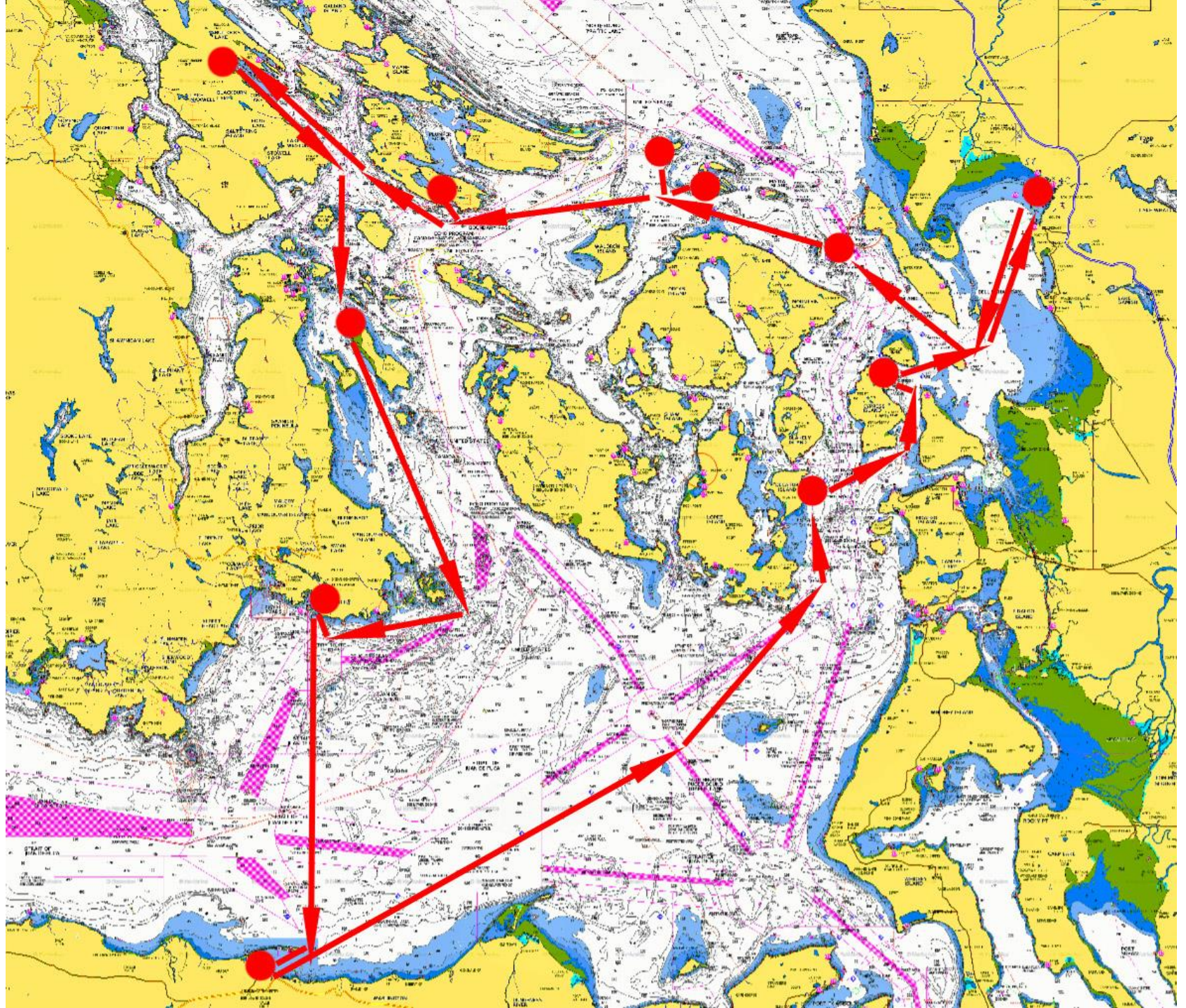
Destinations

Islands and Marine Parks:

- On Buoys: Clark Island, Sucia or Patos Islands, Sidney Spit, Cypress Island
- On Docks: Sidney Spit (maybe S/V Sea Otter), James Island

Ports:

Poet's Cove, Ganges, Victoria, Port Angeles
(plus Bellingham for Friday overnight)



What to Bring, Not Bring

-Minimize

-Only soft bags, NO hard luggage/suitcases.

-Sleeping bag

-If camping: pad?, tent?, headlamp?

– Backpacking-type gear, not big car-camping gear

-Bunting/fleece jacket, light rain/wind parka.

-12v chargers, battery packs, cables, for cell phones.

-Boat shoes, sandals (for dinghy), inflatable or kayak pfd?

-See charter company list of what to bring.

What Boat are You On (to start)?

We invite you to consider sailing on other boats too for a day.

- **S/V Interlude:**
 - Leslie, Jill, Kate, Joshua, Richard, Gene, Joanna
- **S/V Tivoli:**
 - Dan, Justin, Anina, Allez, David, Jeff, Carol
- **S/V Sea Otter:**
 - Brian, Howard, Nathalie, Crystal, Beth, Chris

Living on the Boats

-Head Use:

(Absolutely no TP in toilet!)

-Music (To listen to music, bring headphones.)

-Water conservation

-Food (Food committee rules!)

Living on the Boats, 2

-Electricity conservation:

- Heater Use (Limit!)
- Fridge (Turn off at night)
- Microwave/hair dryer –Not on islands!
- When on shorepower microwave, AC outlets, ok.

-Showers:

- In ports
- On swim platform of 2 larger boats
- Do NOT use showers in the heads!

Dinghy Captains

Need 1 captain, and 1 volunteer to help when moving the outboard engine, per boat.

Talk with me after meeting about what you do.

Note: Dinghy captains are not our indentured chauffeurs. We will share the dinghy driving.

Filling Water Tanks

- Please help out.
- Need to fill when in port.
- **IMPERATIVE** to fill the correct tank.

Jobs Approaching and Leaving Docks

(for each boat:)

- 3 Dock Line Handlers (Also deploy fenders!)
- 1 Dinghy Attendant
- Others Serve as Protectors Holding an Extra Fender or Cushion

Jobs Picking up **Mooring Buoys**

- 1 Person with Boat Hook
- 2 People Handling Lines
- 1 Person Signaling to Helmsman

Jobs When Sailing, Motoring

Navigator (always) – Know where we are on the chart in the chartbook. Check position on chartplotter.

Helmsman (always) – Maintain point of sail when sailing. Understand how to avoid inadvertent jibes.

Crab Pots – Watch For Them

Jib Sheet Grinders (when sailing)

Main Sheet Grinder (when sailing)

– Note How to Use a Winch Handle

Responsibilities of Boat Captains, Safety Officers, and EVERYONE

- Navigation issues: Look at charts, chartplotter.
- Sailing/Motoring: Do it safely and well.
- Help all members get the experiences they want.
- Help new sailors to learn (if they want).
- Dock and leave docks with minimum risk of damage to the boats.
- Show consideration towards everyone.

Safety

- Inadvertent Jibes
- PFD Use and Availability
- Don't Fall Overboard!
 - Discuss Man Overboard Situation

Food

Food Committee Report

Pay Food Committee!

Other Issues

Any Other Concerns,
Questions?

Departure from Bellingham

Need to make carpool arrangements.

Arrival at San Juan Sailing, on Friday afternoon:

- 3:00 Captains, Safety Officers arrive
- S/V Interlude Check-Out, 5:30
- S/V Tivoli Check-Out, 5:30
- S/V Sea Otter Check-Out, 7:00
- Can load boats about 1 hour after check-out time.

Boats depart on Saturday about 9 a.m.