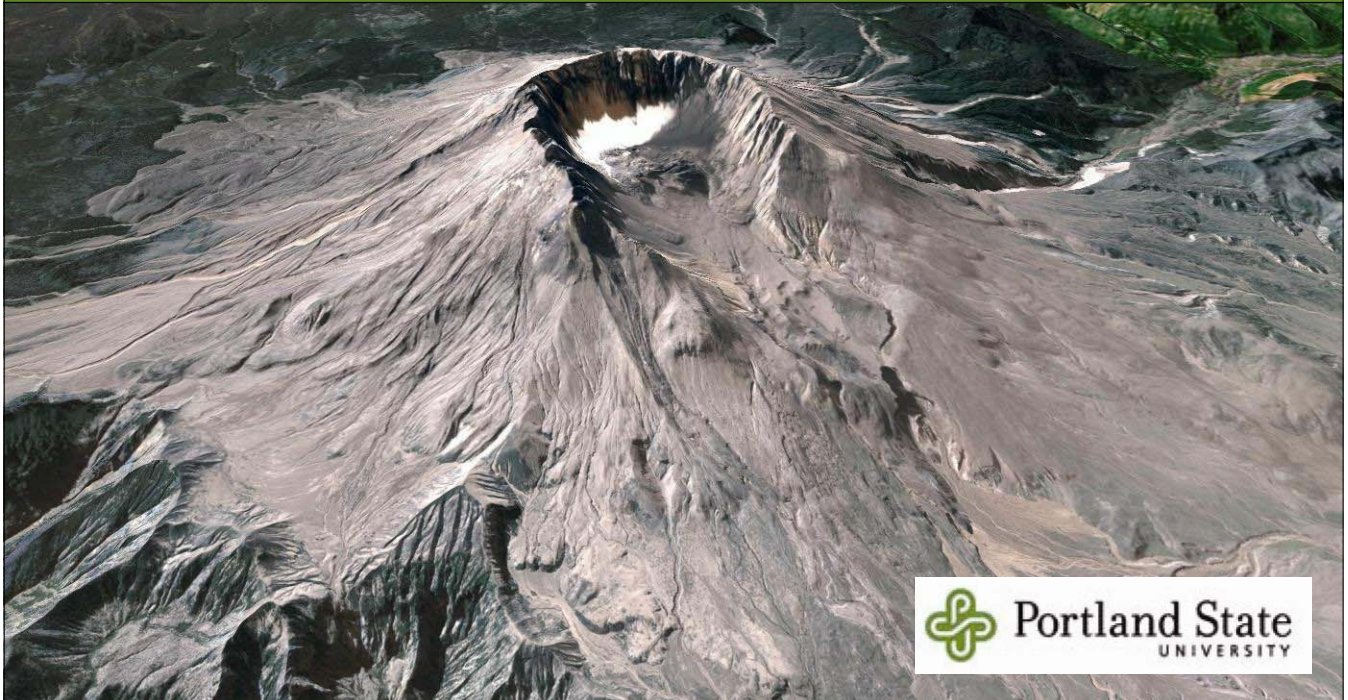


# Google Earth, Sketchup & ArcGIS



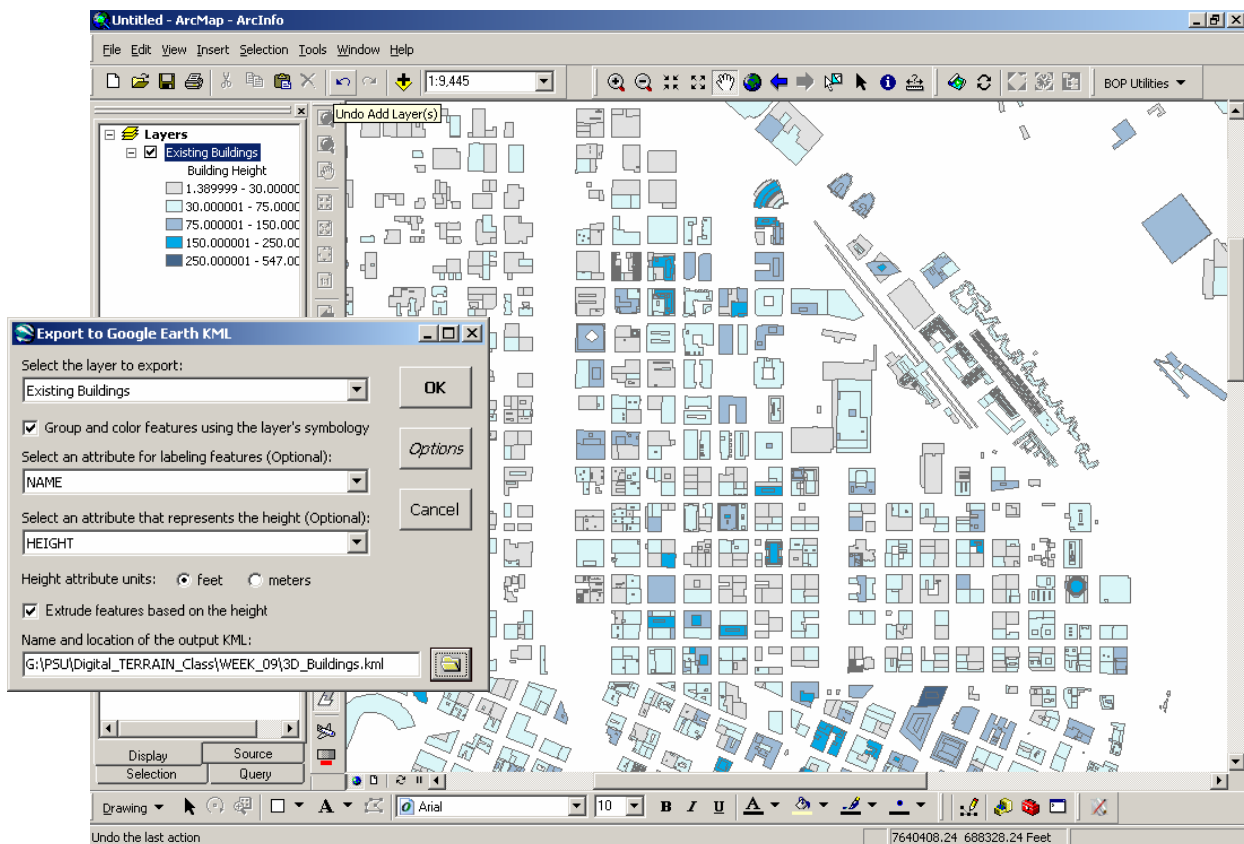
## Google Earth

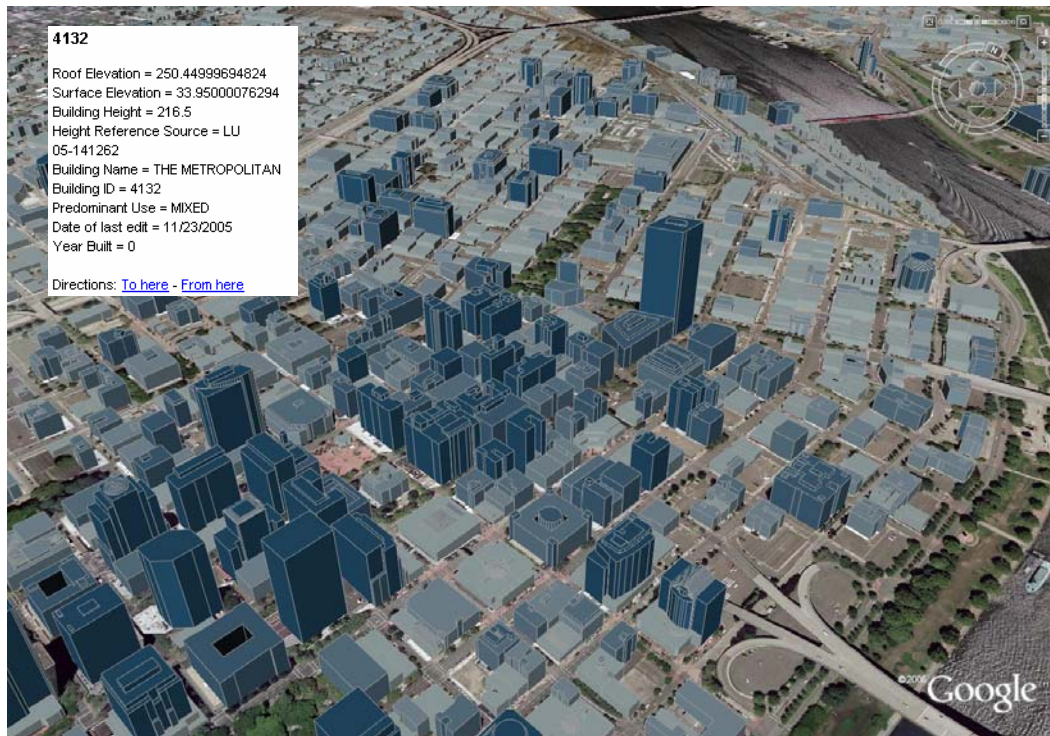
- 3D model of entire Earth online
- using innovative caching/network streaming to deliver large amounts of data very quickly (Keyhole)
- any GIS data can be viewed in Google Earth as “keyhole markup language” (KML/KMZ) files

## KML example

```

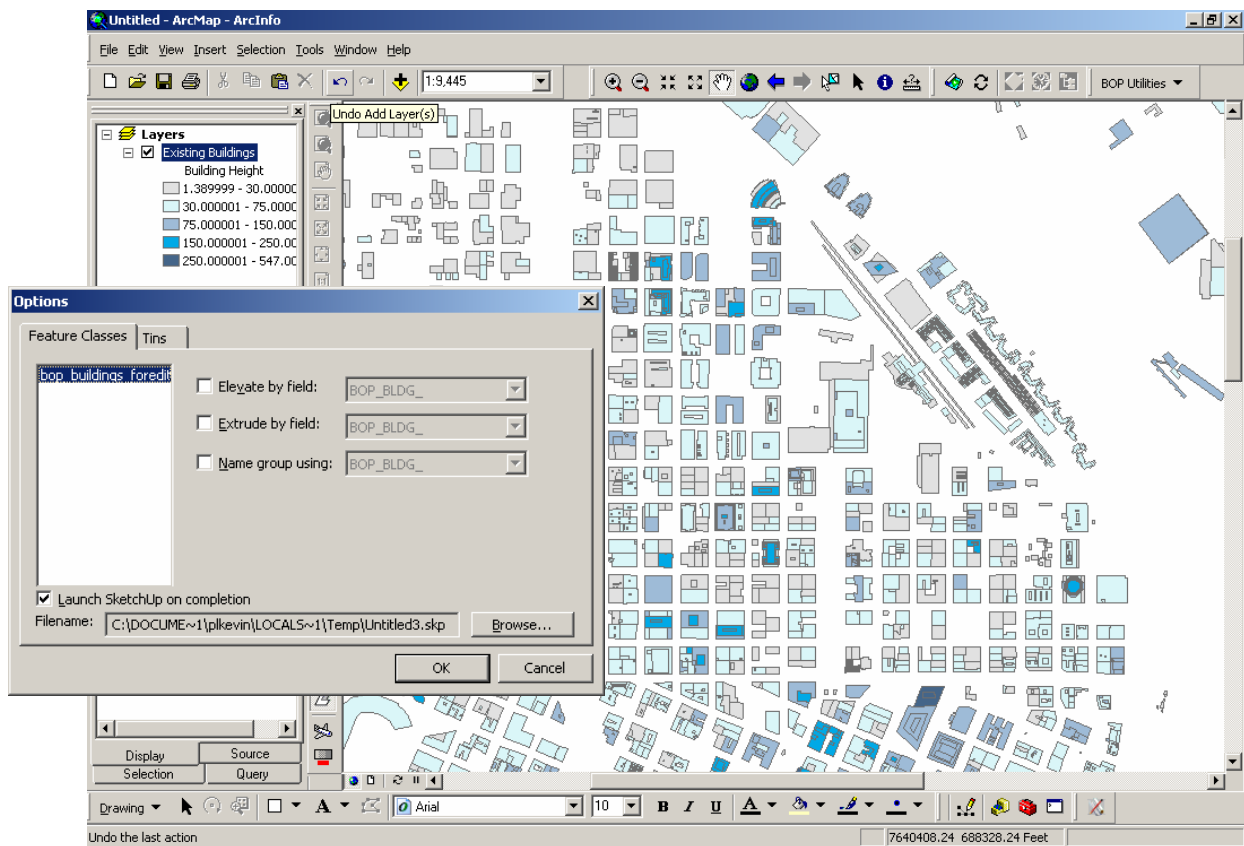
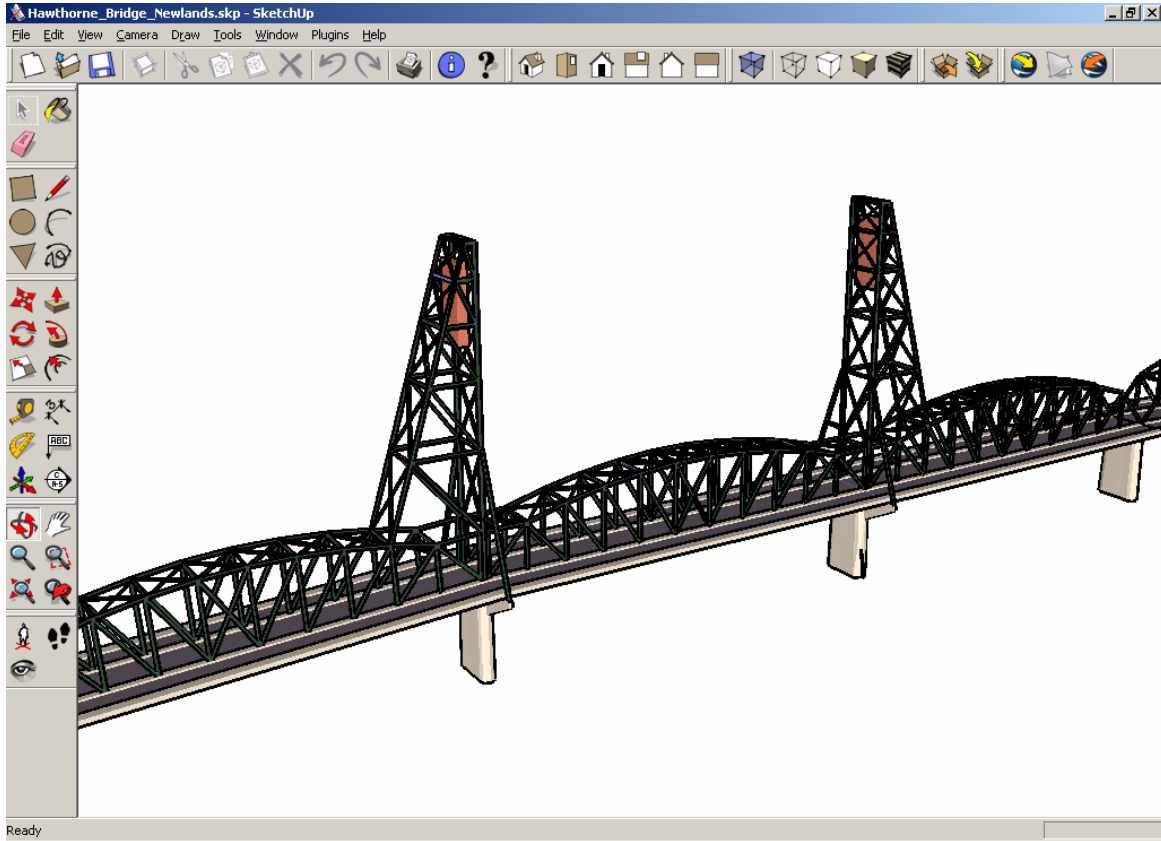
<?xml version="1.0" encoding="UTF-8"?>
<kml xmlns="http://earth.google.com/kml/2.0">
<Document>
  <name>boulevards_UD</name>
  <open>1</open>
  <description><![CDATA[Exported from boulevards_UD on 11/20/2006]]></description>
  <Style id="FEATURES">
    <LineStyle>
      <color>FF990030</color>
      <width>1</width>
    </LineStyle>
  </Style>
  <Folder>
    <name>Features</name>
    <open>0</open>
    <Placemark>
      <name>1</name>
      <description><![CDATA[]]></description>
      <styleUrl>#FEATURES</styleUrl>
      <LineString>
        <extrude>0</extrude>
        <tessellate>1</tessellate>
        <altitudeMode>clampedToGround</altitudeMode>
        <coordinates>
          -122.675520340464,45.5144331233002,0
          ,-122.679281420038,45.5154246739959,0
        </coordinates>
      </LineString>
    </Placemark>
  </Folder>
</Document>
  
```

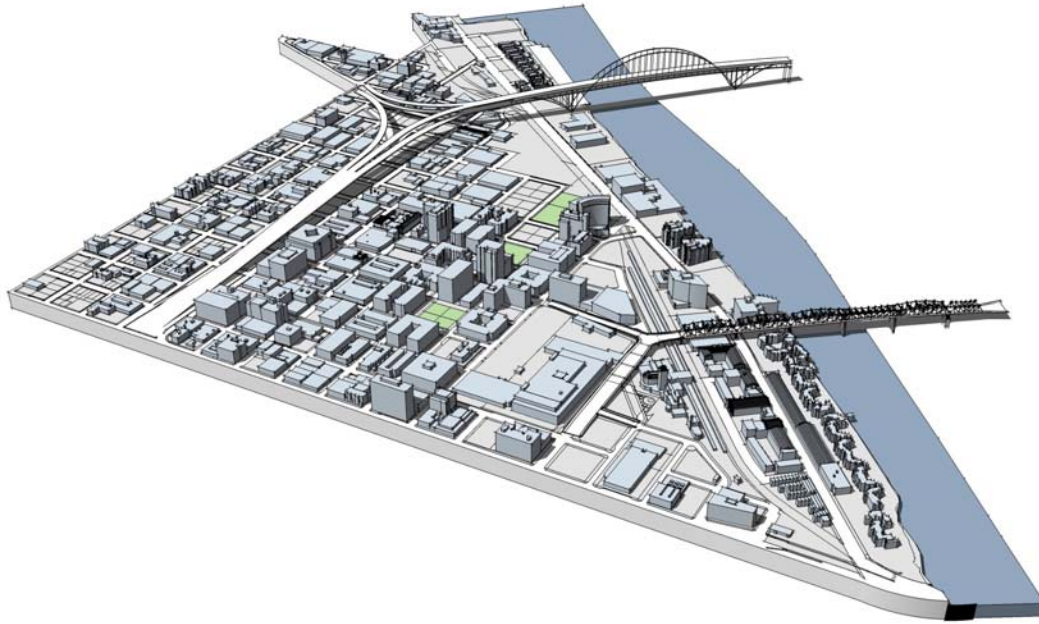




## SketchUp

- 3D drawing software used for detailed modelling of smaller areas
- very easy to use
- owned by Google; interacts seamlessly with Google Earth
- ESRI tools export GIS data to Sketchup





**KML Reference:**

<http://code.google.com/apis/kml/documentation/kmlreference.html>

**Sketchup Plugin for ArcGIS:**

<http://sketchup.google.com/download/>