

Locating a Suitable Site for a Professional Football Stadium in the Portland Metro Area



Background

- 8 Games per Season
- 100,000 Fans for College Football
- Every Team has Positive Income



<https://www.mattleinarfoundation.org/donate-today/gift-shop/>

Data Used

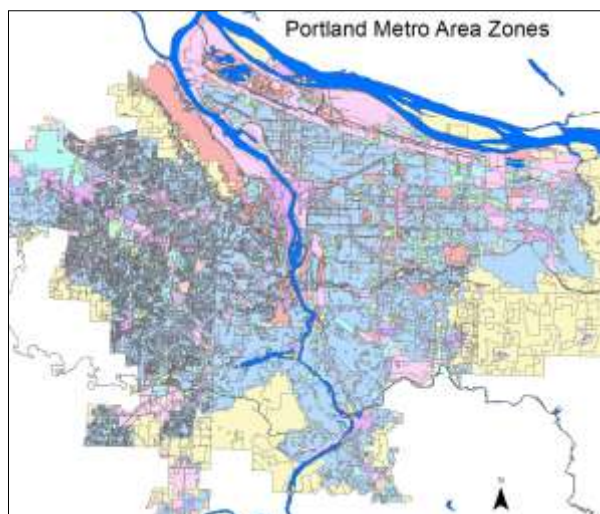
- Portland Metro Area Boundary
- Major Arterials
- Light Rail
- Zoning

From RLIS



Analysis

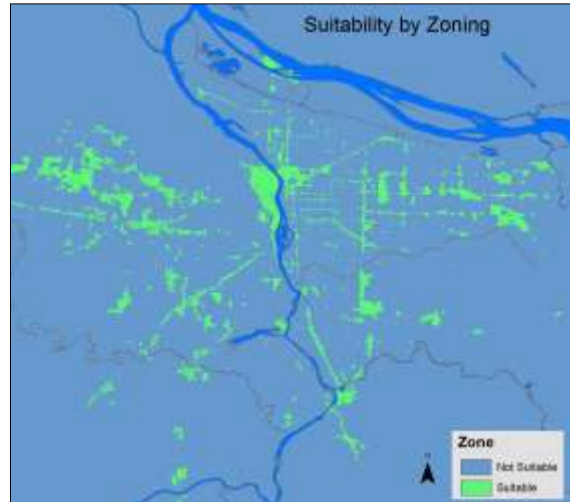
Zoning
Needed to
rasterize and
reclass into
a useable
layer.



Analysis

Zoning

Rasterized &
reclassified.
Commercial &
mixed use
residential are
suitable areas.



Analysis

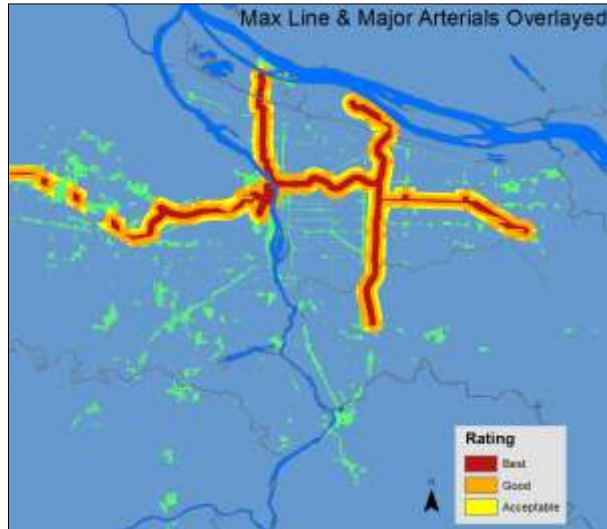
Max Line &
Maj Arterials
Half mile
euclidean
distance
buffer.
(3 classes)



Analysis

Max Line & Maj Arterials

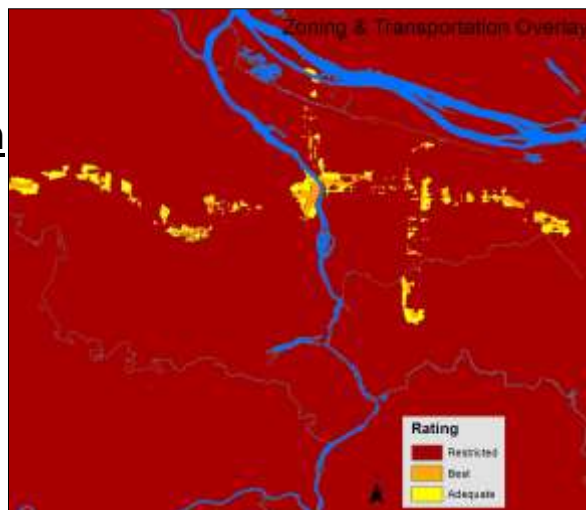
Overlayered
the layers.
Left it as
three
classes.



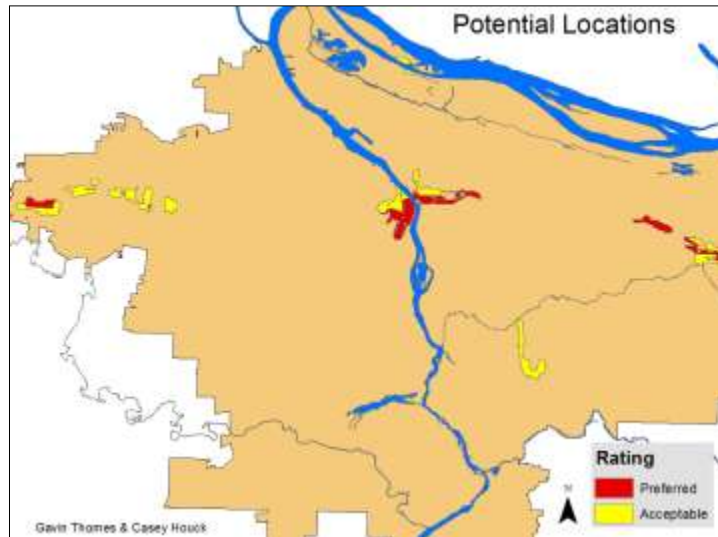
Analysis

Zoning & Transportation

Overlayered to
show all
potential sites
for a football
stadium.



Results



Suggestions

- Use Parks Data.
- Use Building Data to take into account current occupants of lots.
- Consider using different zones.



<http://cmkelham.files.wordpress.com/2010/09/nfl-logo.jpg>