



research question

where are the most
walkable communities
in the city of portland?



walkable community



a community in which the built environment is friendly to the presence of people living, shopping, visiting, enjoying, or spending time in an area

Steve Abley, "Walkability Scoping Paper." March 2005

criteria according to Dan Burden of The Walkable and Livable Communities Institute

- ◉ designed for people
- ◉ town centers
- ◉ mixed income, mixed use
- ◉ public spaces
- ◉ well-connected
- ◉ properly scaled to 1/8, 1/4, and 1/2 mile segments



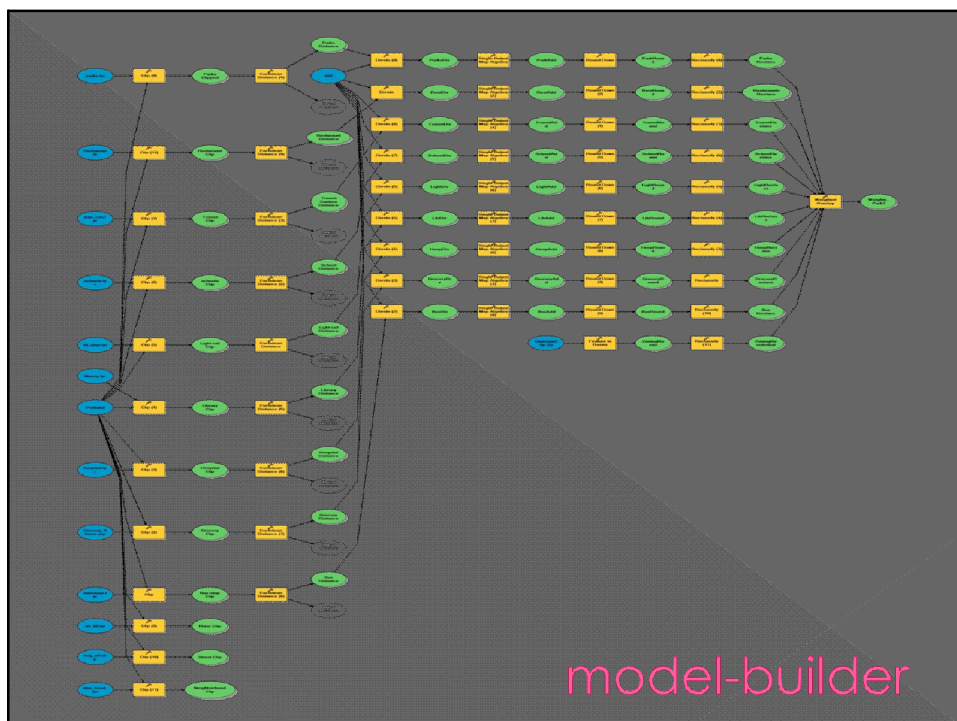
method

clip

euclidean distance

reclassify

weighted overlay

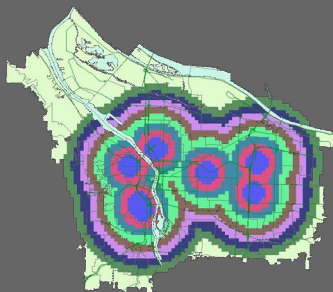


clip

- from metro RLIS
 - > green spaces
 - > schools
 - > libraries
 - > transit stops
 - > zoning
 - > river
- from city of portland
 - > restaurants
 - > grocery stores

euclidean distance

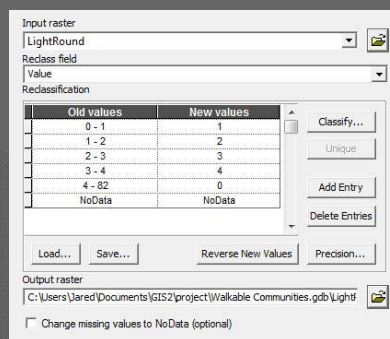
- create rasters of distances from desired features
- convert feet to $\frac{1}{8}$ mile units via:



- > divide (by 660)
- > simple output map algebra
- > round down

reclassify

- intervals of $\frac{1}{8}$ mile
- walkable distances
 - > $\frac{1}{8}$ mile public spaces
 - > $\frac{1}{4}$ mile schools
 - > $\frac{1}{4}$ mile restaurants
 - > $\frac{1}{4}$ mile libraries
 - > $\frac{1}{4}$ mile grocery stores
 - > $\frac{1}{2}$ mile transit stops
 - > 1 mile hospitals
- outside of “walkable” distance, reclassify as 0

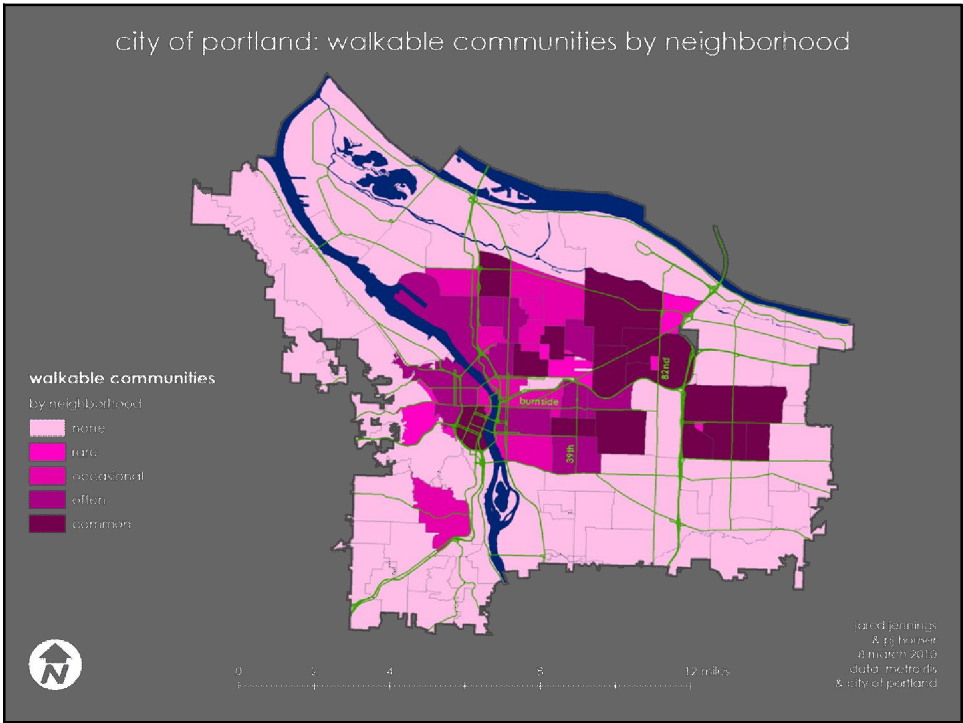
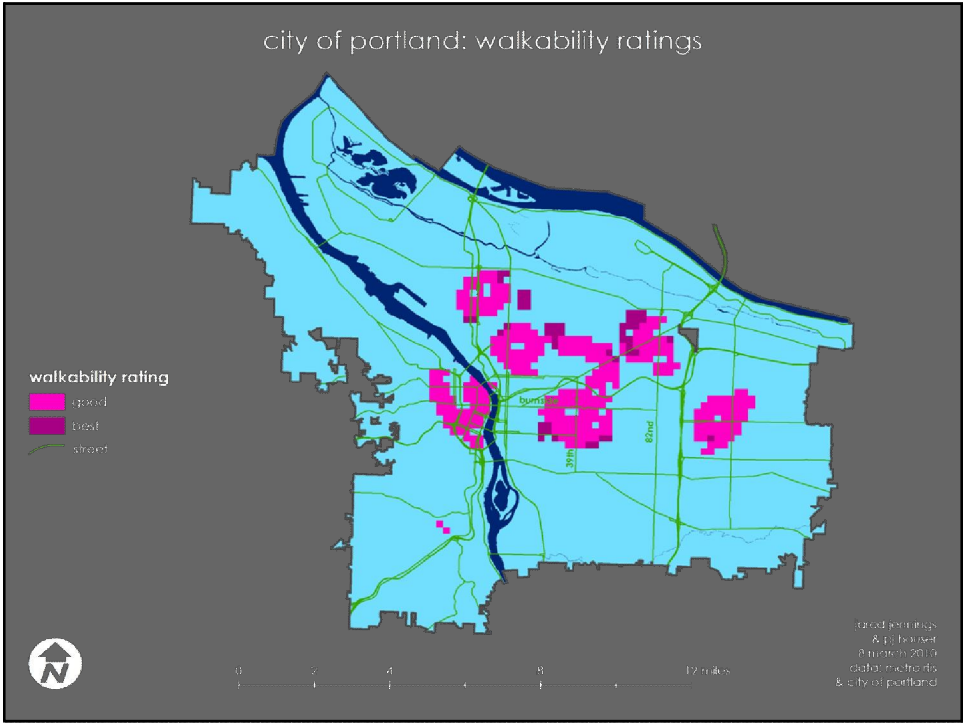


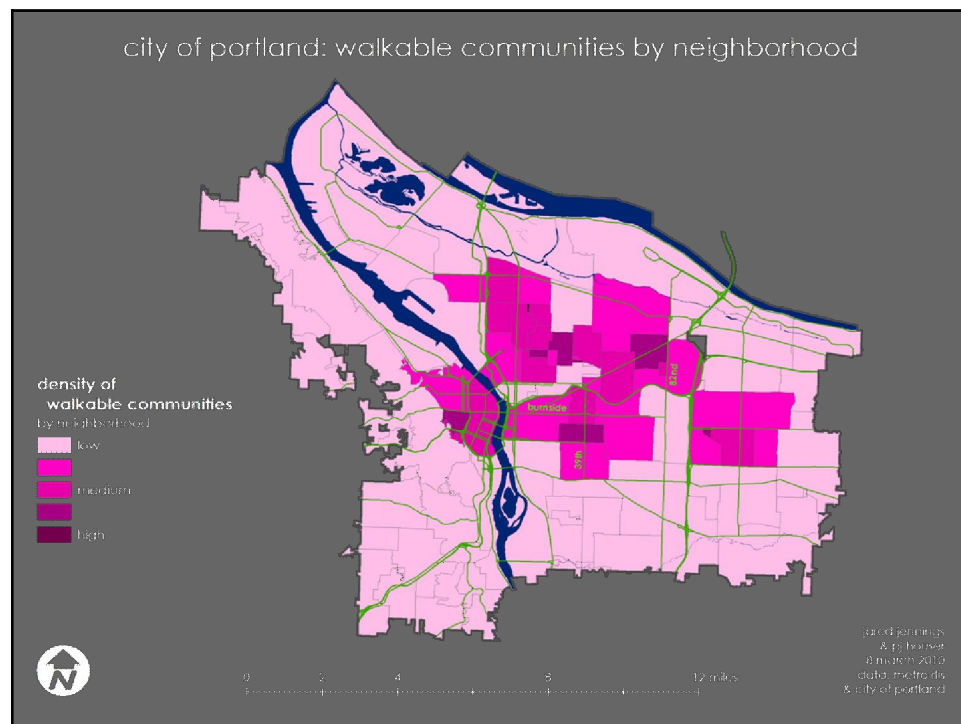
weighted overlay

- based on Dan Burden's distance criteria
- restricted to residential areas (via zoning)

Weighted overlay table

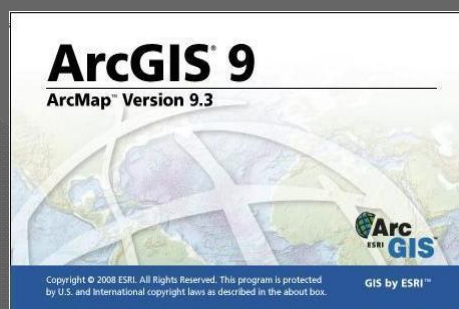
Raster	% Influence	Field	Scale Value
⌵ Parks Reclass	23	VALUE	
⌵ TransitReclass	6	VALUE	
⌵ SchoolReclass	17	VALUE	
⌵ LightReclass	6	VALUE	
⌵ LibReclass	11	VALUE	
⌵ HospReclass	3	VALUE	
⌵ GroceryReclass	17	VALUE	
⌵ Bus Reclass	6	VALUE	
⌵ ZoningResidential	0	VALUE	
⌵ Restaurants Recla	11	VALUE	





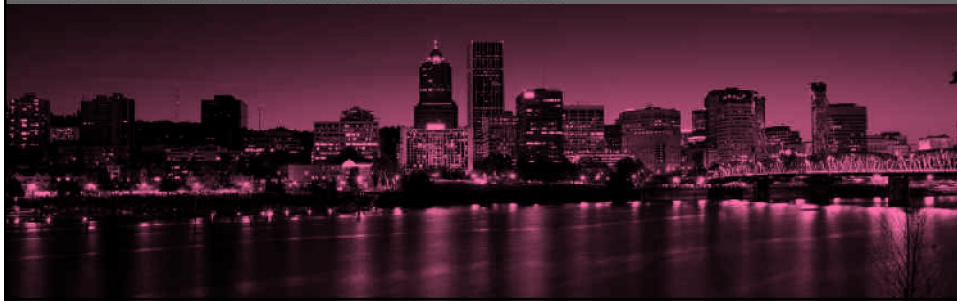
challenges

- ◉ decimal precision
- ◉ bugs in model-builder
 - > inconsistent with relative path names
 - > weighted overlay re-sorts values
- ◉ incomplete metro info



recommendations

- distance by street network
- range of mixed income in residential areas
- combine all transit/bus/light rail stops



resources

- Abley, Steve. "Walkability Scoping Paper." March 2005.
- Burden, Dan. <http://walkable.org>
- Metro RLIS
- City of Portland employee