

Events in Dynamic Segmentation

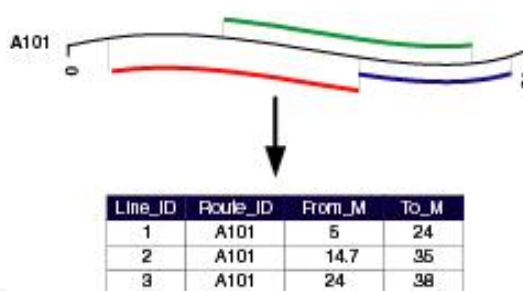
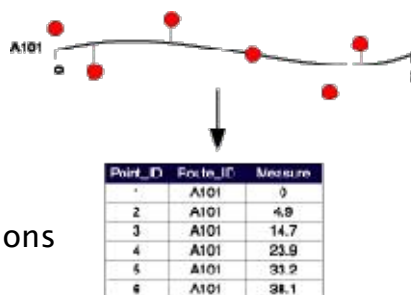
Jennifer DiMiceli

Event Definition

- ▶ Linearly referenced data that occur along routes
- ▶ Usually stored in event table
- ▶ May be point or line
- ▶ Dynamic segmentation links events to a route
 - Allows events to be displayed and analyzed with other geographically referenced data

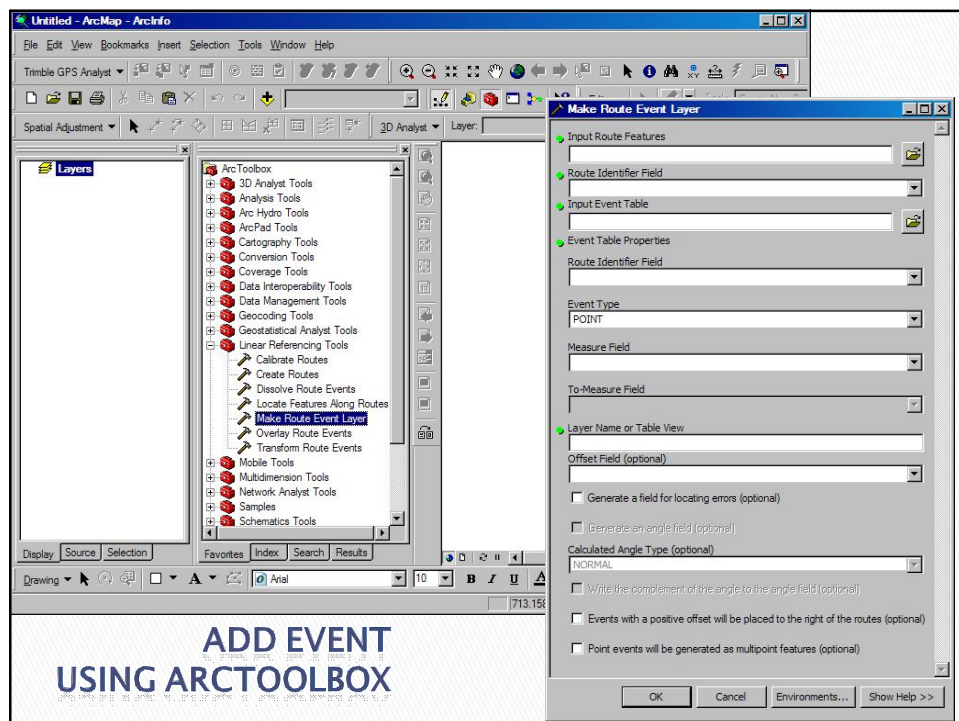
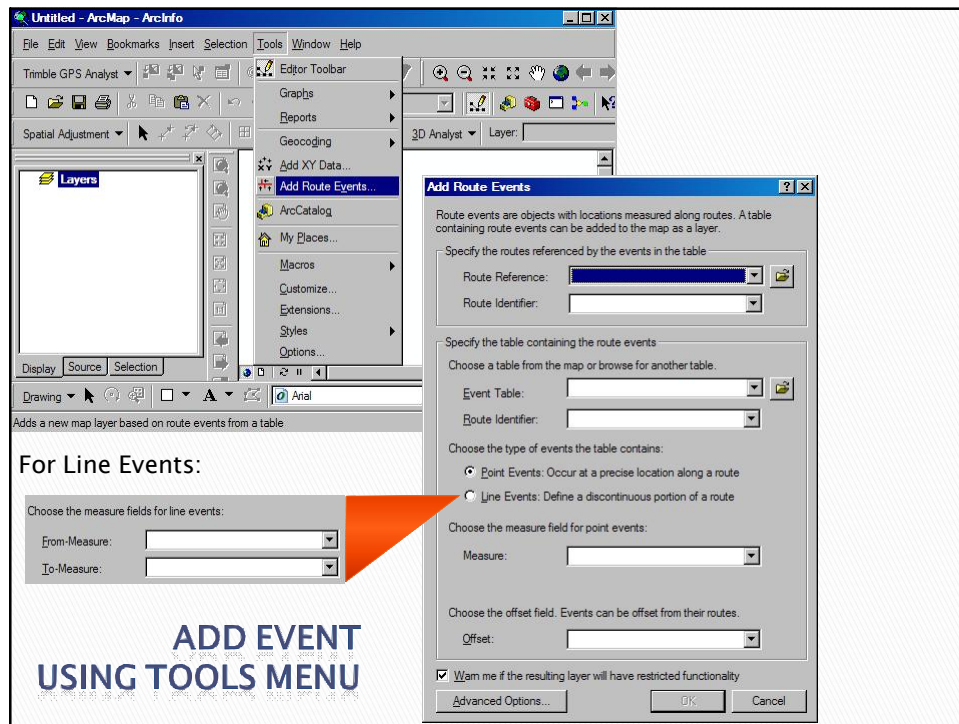
Events Table

- ▶ At least two fields
 - Route identifier
 - One or two measure locations



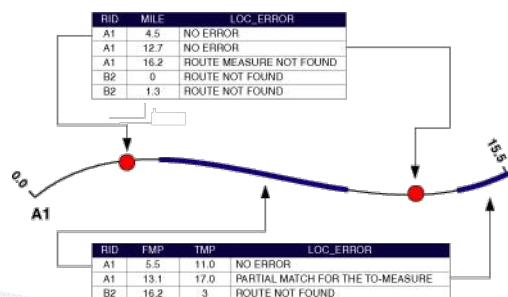
Creating an Events Table

- ▶ Use an existing table that has data on route IDs and linear measures
 - Sample formats = dBASE, comma delimited text, and Excel
- ▶ ALTERNATIVELY – locate point, line or polygon features along a route
 - Similar to vector-based overlay operation
 - Input = Route layer & point, line or polygon layer
 - Output = Event table with route and measurement info where features intersect the route



Errors and Quality Assurance

- ▶ Expose locating errors
 - Route event not found
 - Route measure not found
 - Partial match (line events only)



References

- ▶ Chang, K. 2009. Introduction to Geographic Information Systems, 5th ed. Boston: McGraw-Hill.
- ▶ ArcGIS 9.3 Desktop Help