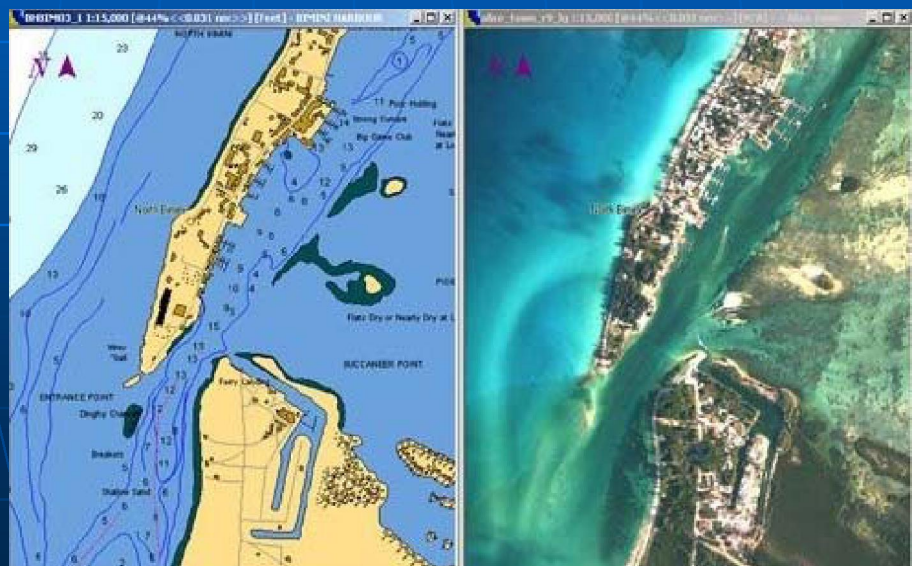


Location Errors

Where am I again?

Definition:

- This refers to the inaccuracy of digitized features



Secondary Source Error

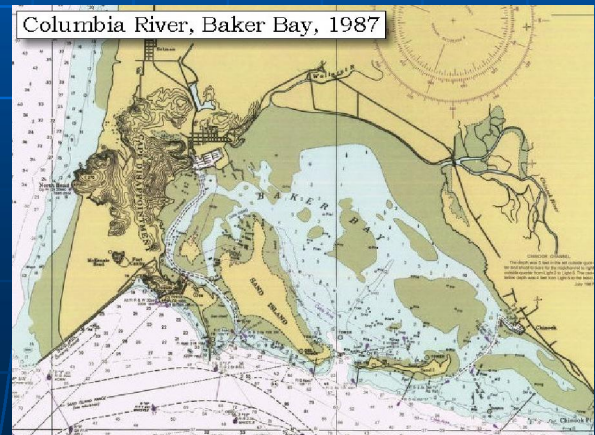
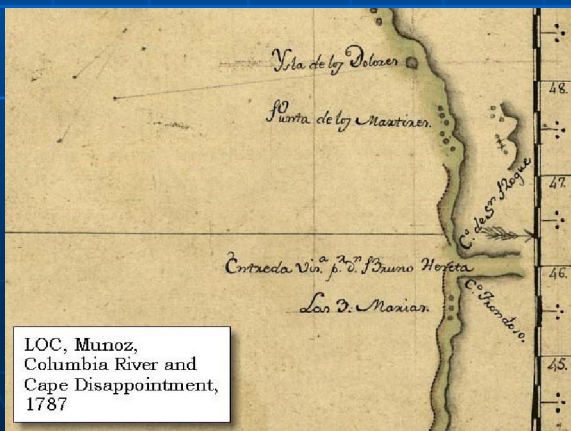
- Digitization source is an existing paper map

Solution:

Check the digital vs the source, via a check plot.

Tolerance Values

- No federal standards to how close it should match
- Only as accurate as the source map itself



Sources of Errors

- Human error in digitizing
- Scanning errors in scanning and tracing
- Errors in conversion of maps into coordinates in the real world

Primary Source Error

- GPS inaccuracy
- Mistakes in original document
- Low resolution imagery
- The earth changed

