

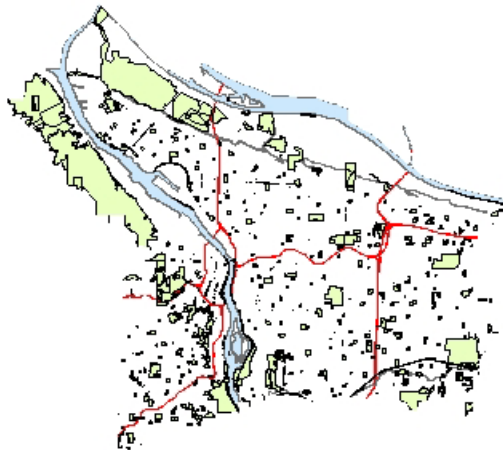
# DOG PARKS IN PORTLAND



## PROPOSED LOCATIONS FOR NEW OFF-LEASH DOG PARKS

Gavin George  
&  
Alex McNiven

## Parks within Portland city limits



Original map with Park layer from RLIS



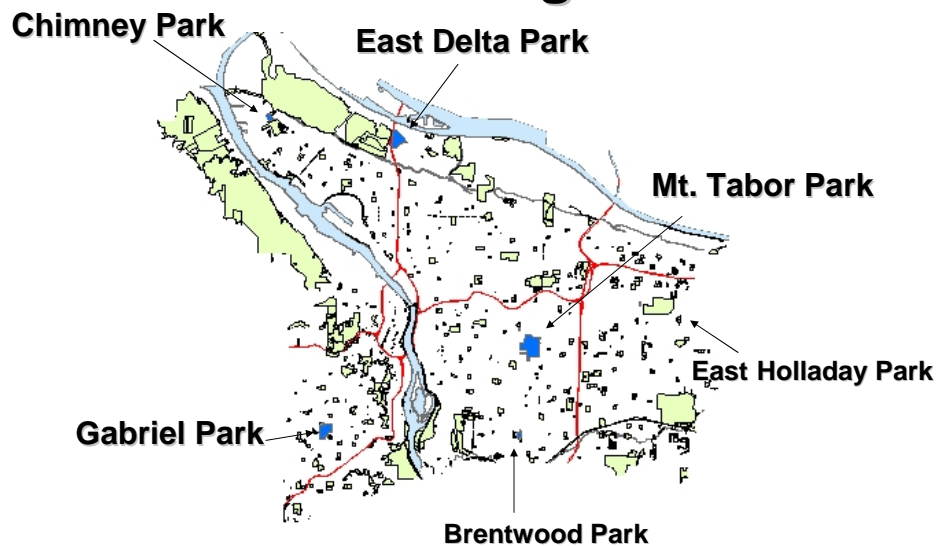
## PORTLAND PARKS & RECREATION

Healthy Parks, Healthy Portland

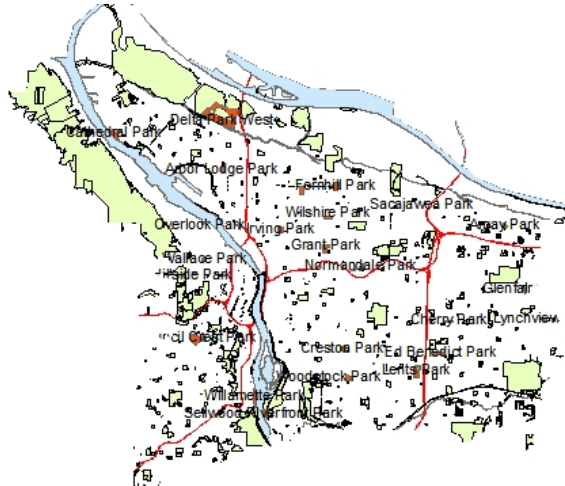
- 7 Off-leash dog parks, open all hours, every day.
- 24 Shared parks with designated off-leash areas.
- Shared parks are generally open in the mornings and evenings.
- Dogs are not allowed during peak hours in shared parks.



## Full-Time Dog Parks

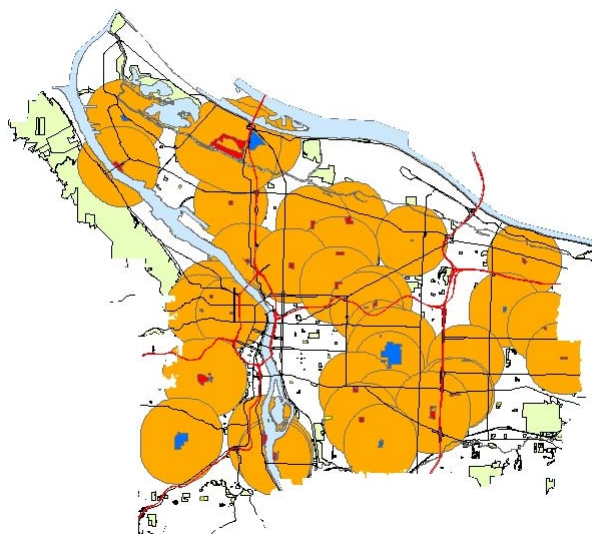


## Parks with shared off-leash areas

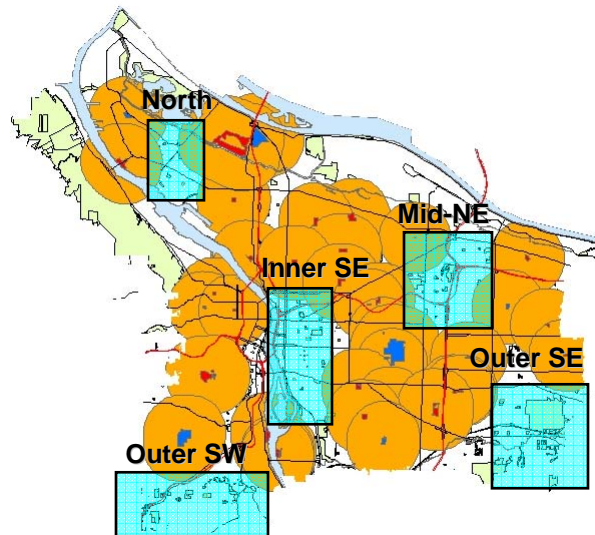


Winter/Fall: Open 5:00 to 9:00am – 4:00pm to closing  
Summer/Spring: Open 5:00 to 9:00am – 6:00pm to closing

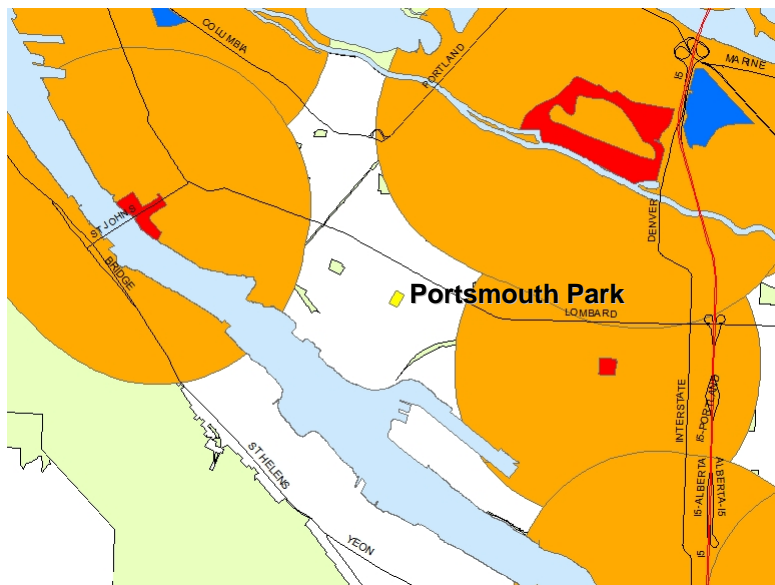
## Existing Dog Parks with 1-mile Buffers



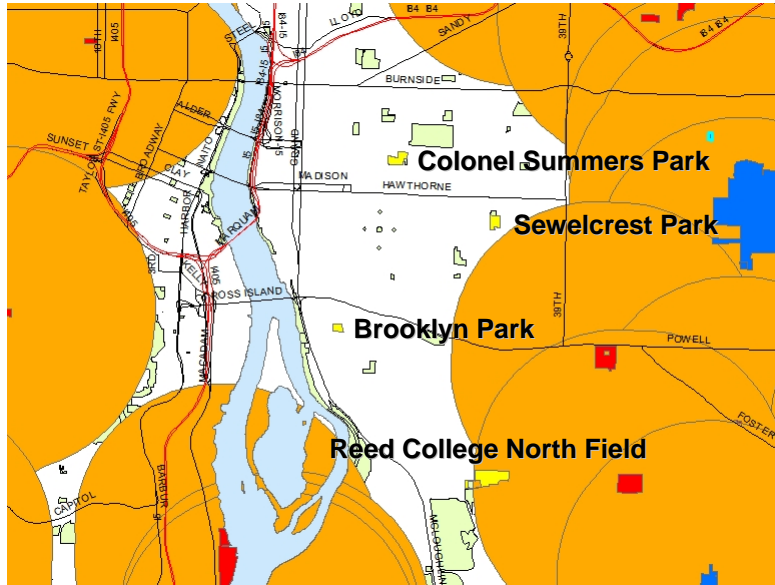
## Areas Unserved by Dog Parks



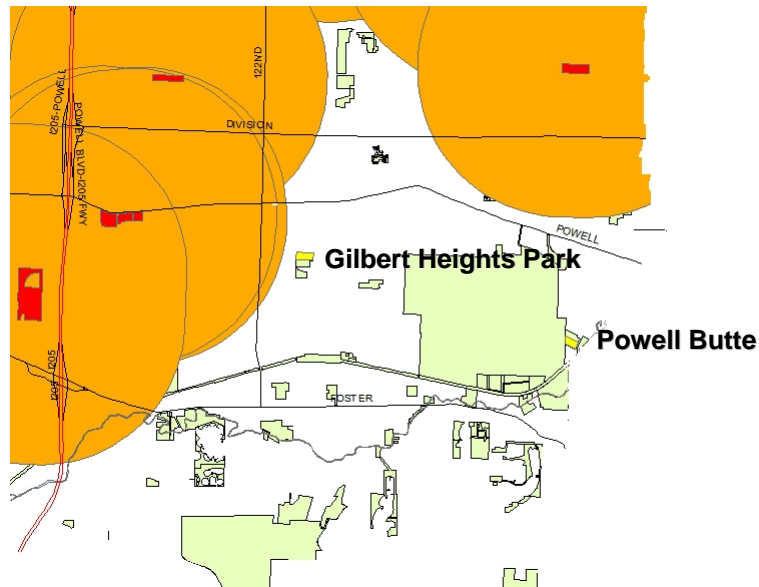
## Proposed Parks in N Portland



## Proposed Parks in inner SE Portland



## Proposed Parks in Outer SE Portland



# Proposed Parks in Outer SW Portland

The map displays the Outer SW Portland area, including the following locations and features:

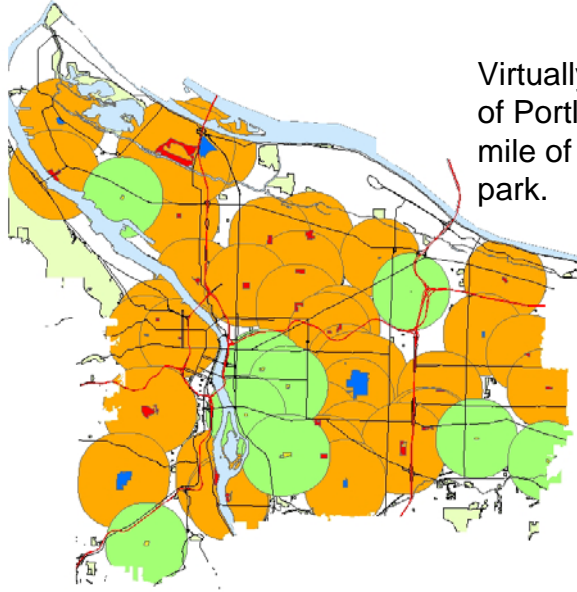
- BEAVERTON HILLS DALE**: Located in the upper left quadrant.
- CAPITOL**: Located near the center, adjacent to the Beaverton Hills Dale area.
- BARBUR**: A road running diagonally across the center.
- WACOMAN**: A road running vertically in the center-right.
- McLAUGHLIN**: A road running diagonally in the upper right.
- SELWOOD**: A road running horizontally in the center-right.
- TACOMA**: A road running horizontally in the lower right.
- BOONES FERRY**: A road running diagonally in the lower left.
- TER WILLIGE**: A road running diagonally in the lower right.
- Maricara Park**: A green-shaded area located south of the Barbur road.
- Blue-shaded area**: A rectangular area located in the center-left, near the Capitol.
- Red-shaded area**: A rectangular area located in the center-right, near the Wacomán road.

# Proposed Parks in Outer NE Portland

The map displays the Rocky Butte Park area in Outer NE Portland. The park is shown as a green area with a winding path. Surrounding the park are orange areas representing other land parcels. Key roads and highways are labeled: SANDY, 82ND, 84TH, 86TH, 88TH, 90TH, 92ND, 94TH, 96TH, 98TH, 100TH, 102ND, 104TH, 106TH, 108TH, 110TH, 112ND, 114TH, 116TH, 118TH, 120TH, 122ND, 124TH, 126TH, 128TH, 130TH, 132ND, 134TH, 136TH, 138TH, 140TH, 142ND, 144TH, 146TH, 148TH, 150TH, 152ND, 154TH, 156TH, 158TH, 160TH, 162ND, 164TH, 166TH, 168TH, 170TH, 172ND, 174TH, 176TH, 178TH, 180TH, 182ND, 184TH, 186TH, 188TH, 190TH, 192ND, 194TH, 196TH, 198TH, 200TH, 202ND, 204TH, 206TH, 208TH, 210TH, 212ND, 214TH, 216TH, 218TH, 220TH, 222ND, 224TH, 226TH, 228TH, 230TH, 232ND, 234TH, 236TH, 238TH, 240TH, 242ND, 244TH, 246TH, 248TH, 250TH, 252ND, 254TH, 256TH, 258TH, 260TH, 262ND, 264TH, 266TH, 268TH, 270TH, 272ND, 274TH, 276TH, 278TH, 280TH, 282ND, 284TH, 286TH, 288TH, 290TH, 292ND, 294TH, 296TH, 298TH, 300TH, 302ND, 304TH, 306TH, 308TH, 310TH, 312ND, 314TH, 316TH, 318TH, 320TH, 322ND, 324TH, 326TH, 328TH, 330TH, 332ND, 334TH, 336TH, 338TH, 340TH, 342ND, 344TH, 346TH, 348TH, 350TH, 352ND, 354TH, 356TH, 358TH, 360TH, 362ND, 364TH, 366TH, 368TH, 370TH, 372ND, 374TH, 376TH, 378TH, 380TH, 382ND, 384TH, 386TH, 388TH, 390TH, 392ND, 394TH, 396TH, 398TH, 400TH, 402ND, 404TH, 406TH, 408TH, 410TH, 412ND, 414TH, 416TH, 418TH, 420TH, 422ND, 424TH, 426TH, 428TH, 430TH, 432ND, 434TH, 436TH, 438TH, 440TH, 442ND, 444TH, 446TH, 448TH, 450TH, 452ND, 454TH, 456TH, 458TH, 460TH, 462ND, 464TH, 466TH, 468TH, 470TH, 472ND, 474TH, 476TH, 478TH, 480TH, 482ND, 484TH, 486TH, 488TH, 490TH, 492ND, 494TH, 496TH, 498TH, 500TH, 502ND, 504TH, 506TH, 508TH, 510TH, 512ND, 514TH, 516TH, 518TH, 520TH, 522ND, 524TH, 526TH, 528TH, 530TH, 532ND, 534TH, 536TH, 538TH, 540TH, 542ND, 544TH, 546TH, 548TH, 550TH, 552ND, 554TH, 556TH, 558TH, 560TH, 562ND, 564TH, 566TH, 568TH, 570TH, 572ND, 574TH, 576TH, 578TH, 580TH, 582ND, 584TH, 586TH, 588TH, 590TH, 592ND, 594TH, 596TH, 598TH, 600TH, 602ND, 604TH, 606TH, 608TH, 610TH, 612ND, 614TH, 616TH, 618TH, 620TH, 622ND, 624TH, 626TH, 628TH, 630TH, 632ND, 634TH, 636TH, 638TH, 640TH, 642ND, 644TH, 646TH, 648TH, 650TH, 652ND, 654TH, 656TH, 658TH, 660TH, 662ND, 664TH, 666TH, 668TH, 670TH, 672ND, 674TH, 676TH, 678TH, 680TH, 682ND, 684TH, 686TH, 688TH, 690TH, 692ND, 694TH, 696TH, 698TH, 700TH, 702ND, 704TH, 706TH, 708TH, 710TH, 712ND, 714TH, 716TH, 718TH, 720TH, 722ND, 724TH, 726TH, 728TH, 730TH, 732ND, 734TH, 736TH, 738TH, 740TH, 742ND, 744TH, 746TH, 748TH, 750TH, 752ND, 754TH, 756TH, 758TH, 760TH, 762ND, 764TH, 766TH, 768TH, 770TH, 772ND, 774TH, 776TH, 778TH, 780TH, 782ND, 784TH, 786TH, 788TH, 790TH, 792ND, 794TH, 796TH, 798TH, 800TH, 802ND, 804TH, 806TH, 808TH, 810TH, 812ND, 814TH, 816TH, 818TH, 820TH, 822ND, 824TH, 826TH, 828TH, 830TH, 832ND, 834TH, 836TH, 838TH, 840TH, 842ND, 844TH, 846TH, 848TH, 850TH, 852ND, 854TH, 856TH, 858TH, 860TH, 862ND, 864TH, 866TH, 868TH, 870TH, 872ND, 874TH, 876TH, 878TH, 880TH, 882ND, 884TH, 886TH, 888TH, 890TH, 892ND, 894TH, 896TH, 898TH, 900TH, 902ND, 904TH, 906TH, 908TH, 910TH, 912ND, 914TH, 916TH, 918TH, 920TH, 922ND, 924TH, 926TH, 928TH, 930TH, 932ND, 934TH, 936TH, 938TH, 940TH, 942ND, 944TH, 946TH, 948TH, 950TH, 952ND, 954TH, 956TH, 958TH, 960TH, 962ND, 964TH, 966TH, 968TH, 970TH, 972ND, 974TH, 976TH, 978TH, 980TH, 982ND, 984TH, 986TH, 988TH, 990TH, 992ND, 994TH, 996TH, 998TH, 1000TH, 1002ND, 1004TH, 1006TH, 1008TH, 1010TH, 1012ND, 1014TH, 1016TH, 1018TH, 1020TH, 1022ND, 1024TH, 1026TH, 1028TH, 1030TH, 1032ND, 1034TH, 1036TH, 1038TH, 1040TH, 1042ND, 1044TH, 1046TH, 1048TH, 1050TH, 1052ND, 1054TH, 1056TH, 1058TH, 1060TH, 1062ND, 1064TH, 1066TH, 1068TH, 1070TH, 1072ND, 1074TH, 1076TH, 1078TH, 1080TH, 1082ND, 1084TH, 1086TH, 1088TH, 1090TH, 1092ND, 1094TH, 1096TH, 1098TH, 1100TH, 1102ND, 1104TH, 1106TH, 1108TH, 1110TH, 1112ND, 1114TH, 1116TH, 1118TH, 1120TH, 1122ND, 1124TH, 1126TH, 1128TH, 1130TH, 1132ND, 1134TH, 1136TH, 1138TH, 1140TH, 1142ND, 1144TH, 1146TH, 1148TH, 1150TH, 1152ND, 1154TH, 1156TH, 1158TH, 1160TH, 1162ND, 1164TH, 1166TH, 1168TH, 1170TH, 1172ND, 1174TH, 1176TH, 1178TH, 1180TH, 1182ND, 1184TH, 1186TH, 1188TH, 1190TH, 1192ND, 1194TH, 1196TH, 1198TH, 1200TH, 1202ND, 1204TH, 1206TH, 1208TH, 1210TH, 1212ND, 1214TH, 1216TH, 1218TH, 1220TH, 1222ND, 1224TH, 1226TH, 1228TH, 1230TH, 1232ND, 1234TH, 1236TH, 1238TH, 1240TH, 1242ND, 1244TH, 1246TH, 1248TH, 1250TH, 1252ND, 1254TH, 1256TH, 1258TH, 1260TH, 1262ND, 1264TH, 1266TH, 1268TH, 1270TH, 1272ND, 1274TH, 1276TH, 1278TH, 1280TH, 1282ND, 1284TH, 1286TH, 1288TH, 1290TH, 1292ND, 1294TH, 1296TH, 1298TH, 1300TH, 1302ND, 1304TH, 1306TH, 1308TH, 1310TH, 1312ND, 1314TH, 1316TH, 1318TH, 1320TH, 1322ND, 1324TH, 1326TH, 1328TH, 1330TH, 1332ND, 1334TH, 1336TH, 1338TH, 1340TH, 1342ND, 1344TH, 1346TH, 1348TH, 1350TH, 1352ND, 1354TH, 1356TH, 1358TH, 1



## Current and Proposed Dog Parks



Virtually every part of the city of Portland will be within 1 mile of an open or shared dog park.

