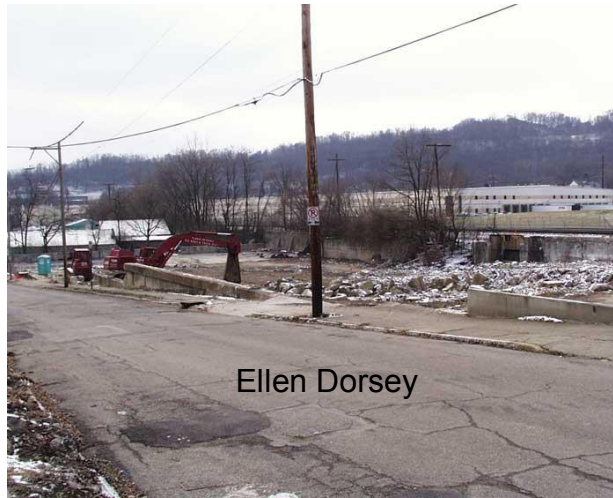


Brownfield Prioritization Model: Considering Environmental Factors, Environmental Justice and Infill Potential

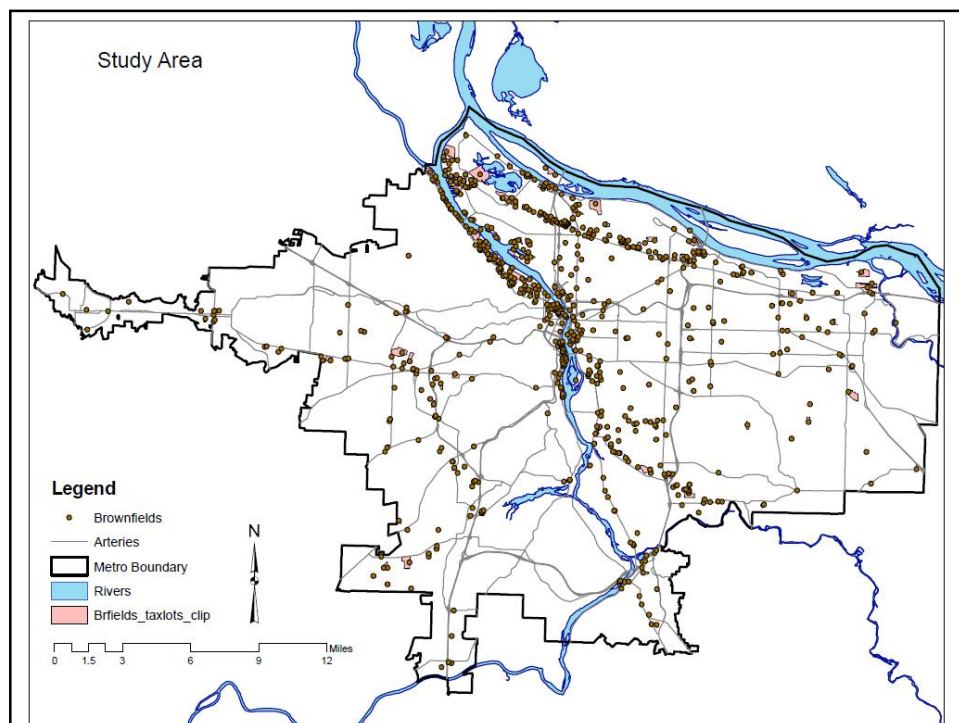


What is a Brownfield?

- Properties that are contaminated by low concentrations of hazardous waste or pollution
- Redevelopment of property is costly, mainly due to clean-up costs.
- Infill (redevelopment) potential in under-utilized land resources
- Brownfield sites located in impoverished or minority neighborhoods are usually not desired by developers

Benefits of Redevelopment

- Improve environmental quality
- Community restoration and green space
- Infill vs. Sprawl
- Economic growth
- Mitigation of impacts urban disinvestment



Multi-criteria Analysis

- Environmental Justice Criteria
- Environmental Factors
- Redevelopment Potential

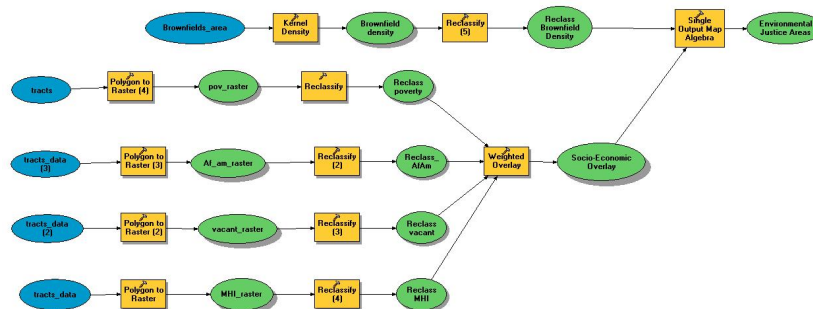
Brownfield Data:

Oregon DEQ Database: GIS Mapping and Applications. Facility Profiler. Retrieved from <http://www.deq.state.or.us/news/databases.htm>.

Environmental Justice

DATASETS (U.S. Census)

- % African-American
- % below Median Household Income (Portland)
- % living in Poverty
- % Vacant Property



Environmental Justice

1. Classification
(Quantile Breaks)

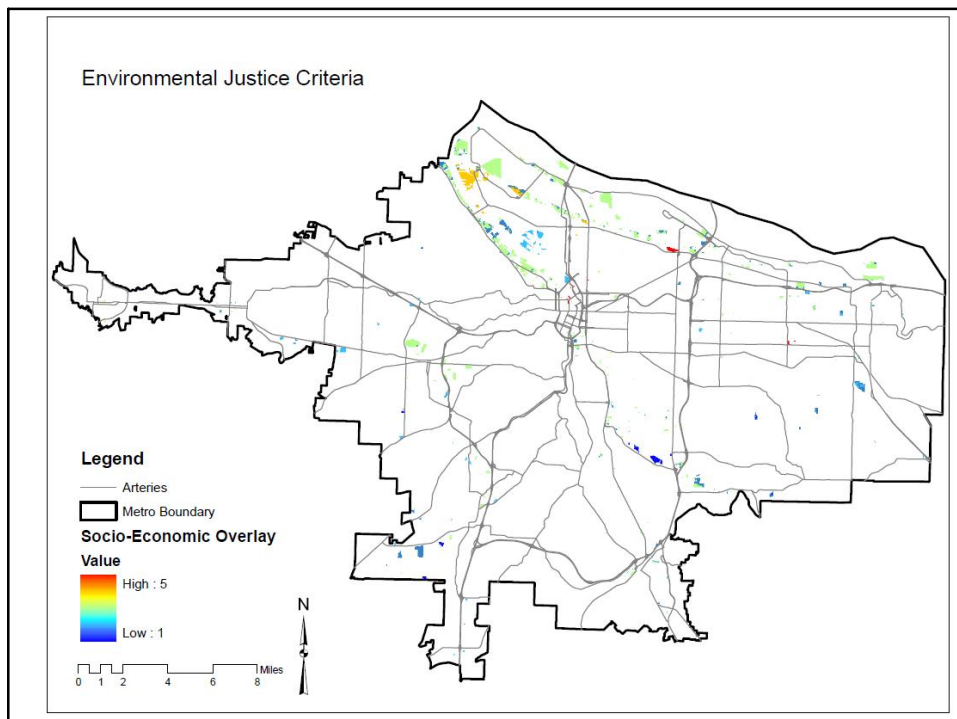
Ranking: 1 to 5
1 (lowest quantile rank)
5 (highest quantile rank)

2. Vector to Raster
3. Reclass (1-5)
4. Weighted Overlay

Weights
% Af. Am 20%
% Vacant 20%
% below MHI 30%
% Poverty 30%

Coefficients^a

Model	Unstandardized Coefficients		Standardized Coefficients	t	Sig.
	B	Std. Error	Beta		
6 (Constant)	-0.336	0.136		-2.5	0.014
% Af Am	0.012	0.005	0.131	2.3	0.024
% vacant	0.033	0.014	0.127	2.3	0.024
% Below MHI	0.01	0.005	0.198	2.1	0.033
% Poverty	0.008	0.003	0.207	2.3	0.021



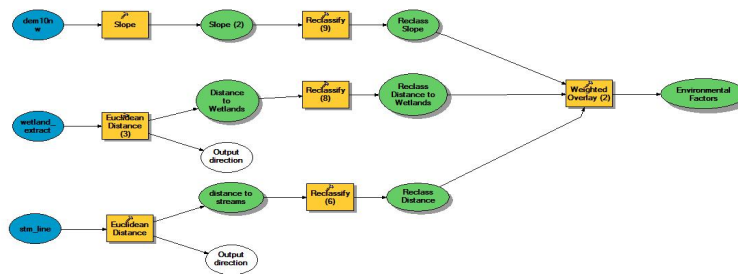
Environmental Factors

Datasets

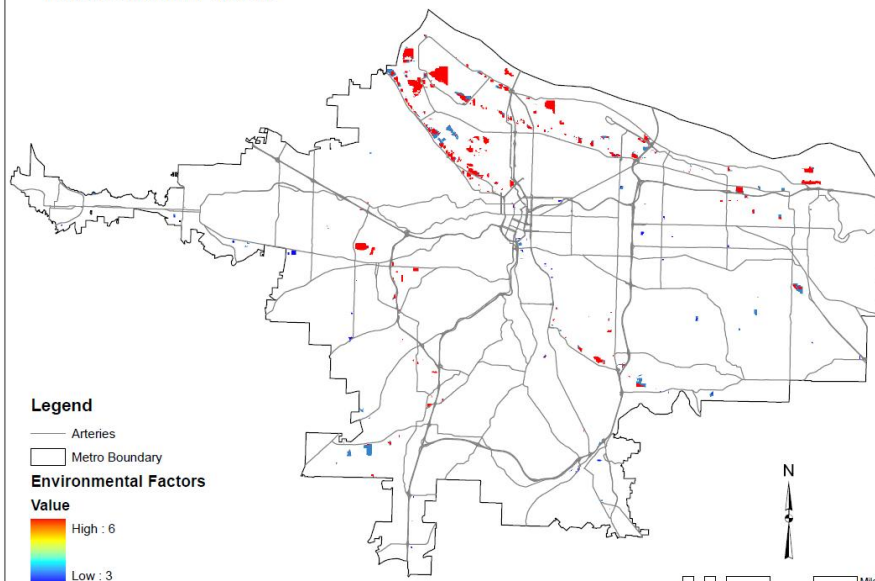
- Distance to Wetlands
- Distance to Streams
- Slope

Process

- Euclidean Distance
- Reclassify
- Weighted Overlay
- Equal Weights
- Restricted slopes 25% or higher in overlay



Environmental Factors



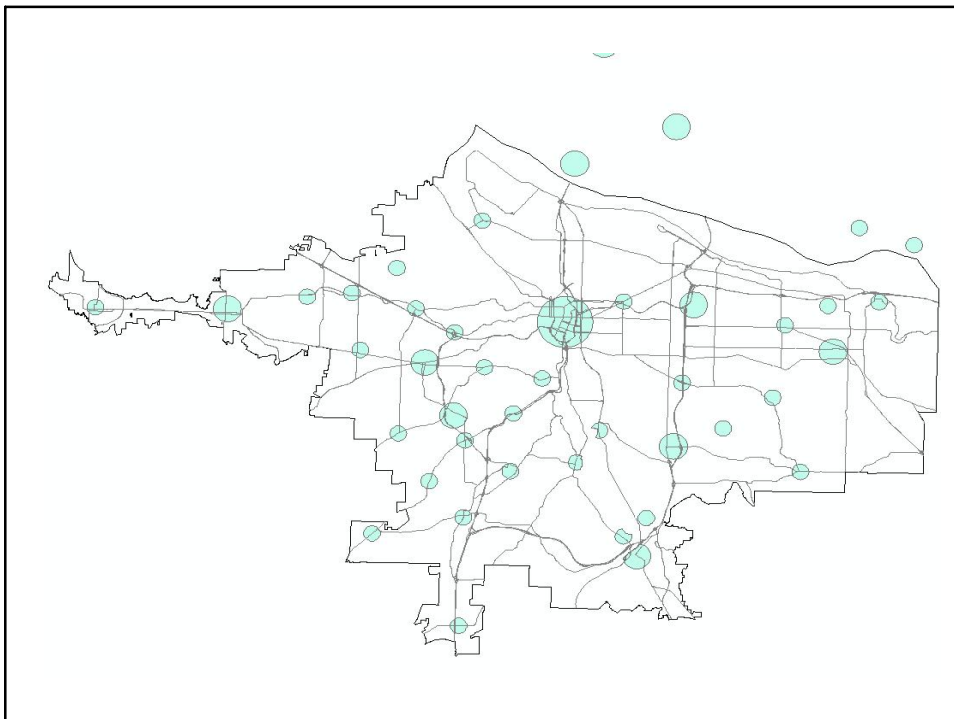
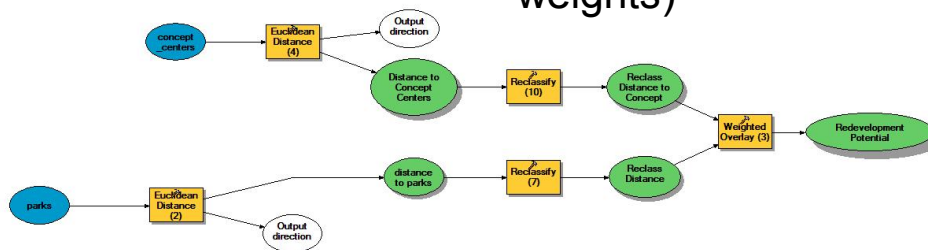
Redevelopment Potential

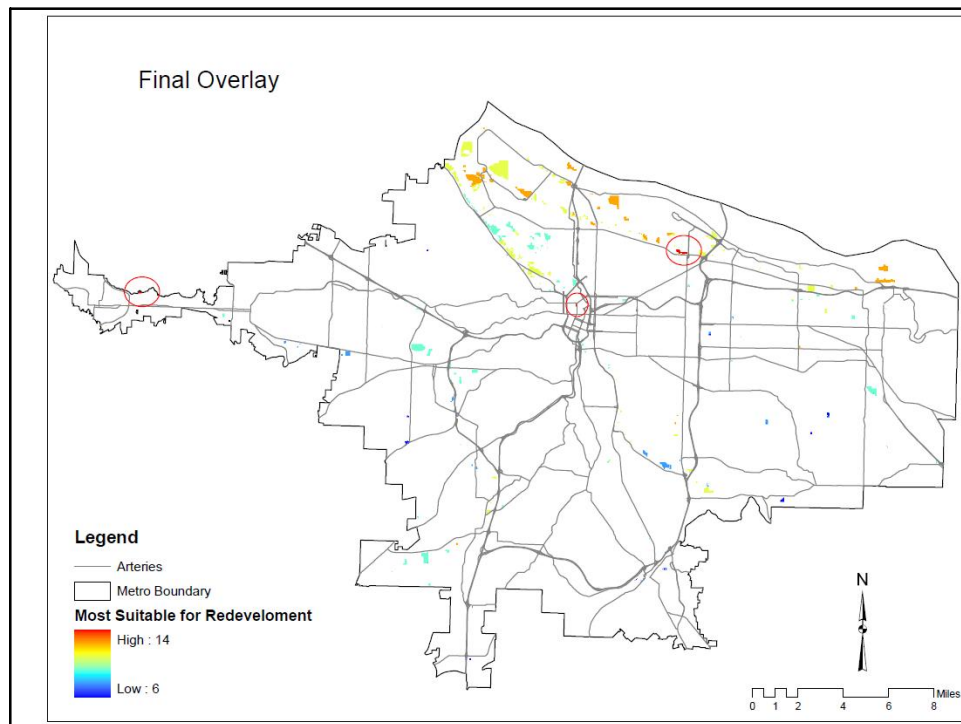
Datasets

- Distance to concept centers
- Distance to Parks

Process

- Euclidean Distance
- Reclassify
- Overlay (equal weights)





Limitations

- Brownfield Data: Facilities not necessarily abandoned and could still be operating
- Census Data: 2000
- Weights should consider public opinion and priorities