

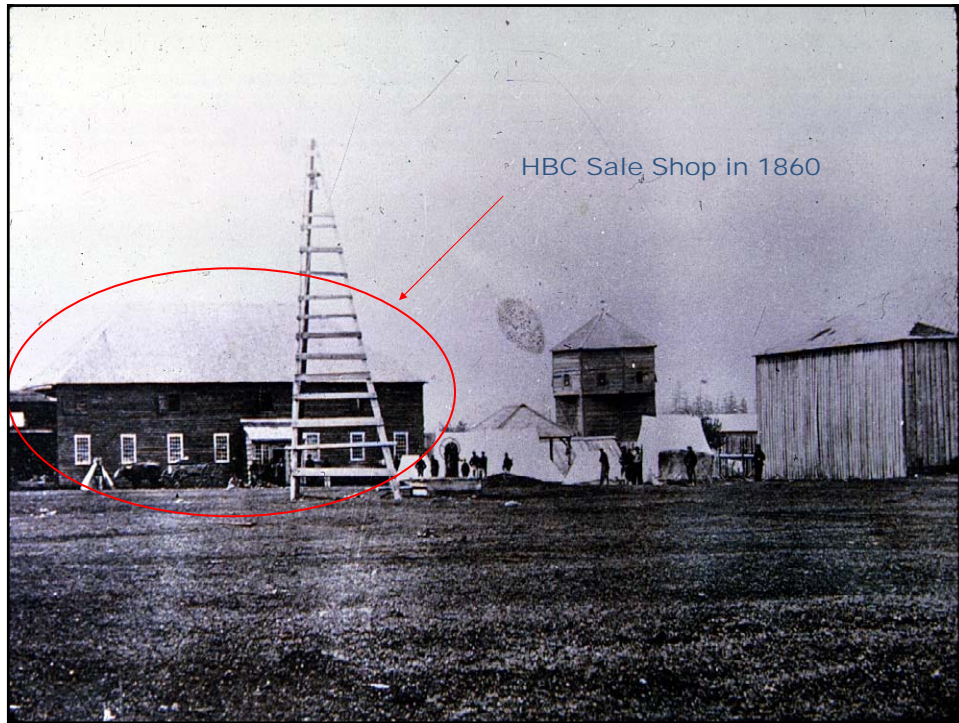
Using GIS and Spatial Statistics to Predict Artifact Distribution at Fort Vancouver National Historic Site



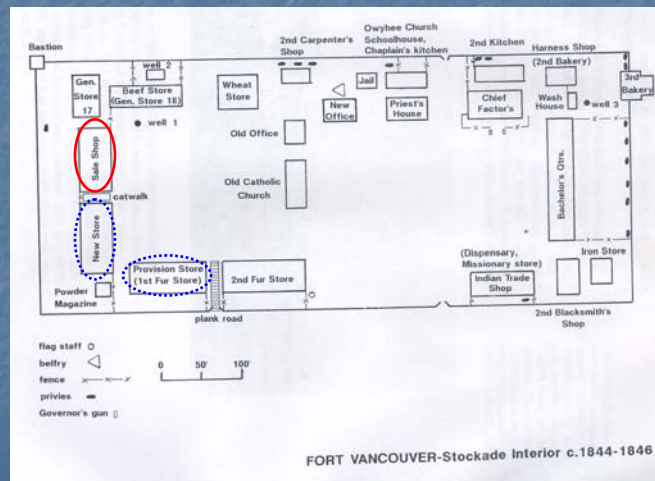
Marielle Pedro
Portland State University

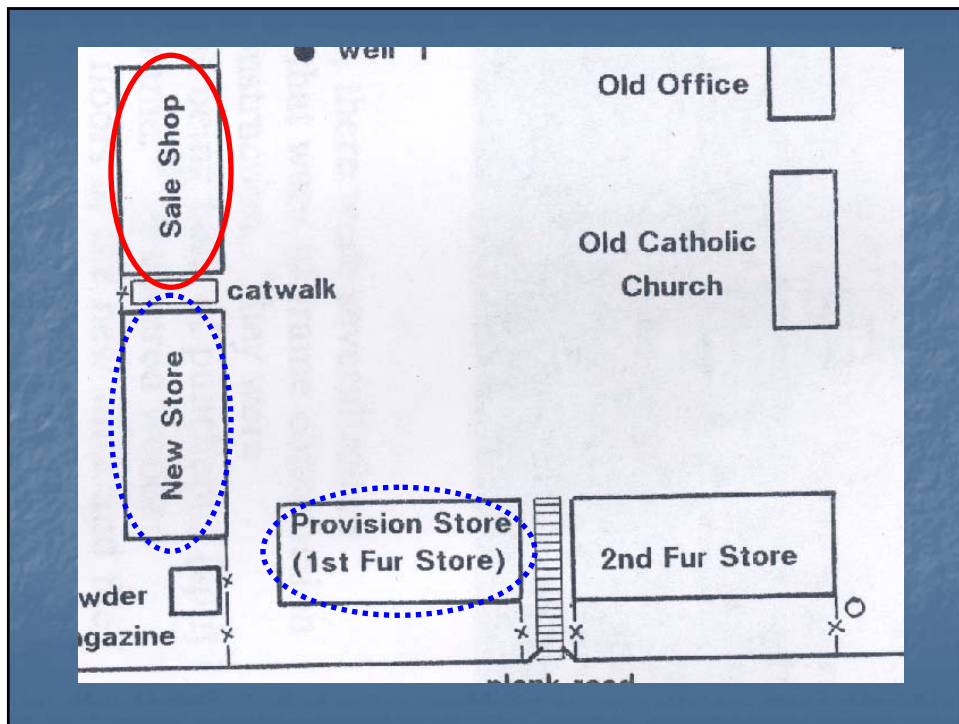
Purpose

- Fort Vancouver National Historic Site Reconstruction of Hudson Bay Company buildings
 - Directed sampling strategy using GIS
- Creating a spatial distribution model, applicable to unexcavated buildings
- Testing spatial distribution model through random sampling in new excavations



Fort Vancouver Stockade





Sales Shop

- Built in 1840's, previous buildings existed on site
- Building size approximately 40 x 86 feet
- Partially dismantled by U.S. Army (1860)- burned
- Only source for tobacco pipes and other supplements to Hudson Bay Company Employees' rations
- Previous excavations: Caywood, OAS, NPS, 2001

New Store

- Built in 1840's, previous buildings existed on site
- Building size approximately 40 x 93 feet
- Partially dismantled by U.S. Army (1860)- burned
- Housed and sold imported goods for the fur trade
- Previous excavations: Caywood

Receiving Store (1st Fur Store)

- Built in 1840's, previous buildings existed on site
- Building size approximately 40 x 100 feet
- Partially dismantled by U.S. Army (1860)- burned
- Housed imported goods for the fur trade- supplied the New Store
- Previous excavations: Caywood

Artifacts found in dump sites outside buildings

Liquor Bottle Glass



Medicine Bottle Glass



Similarities between Buildings

- These buildings were constructed in 1840's by HBC, demolished by US Army
- Buildings approximately 40 feet wide and between 86 and 100 feet in length
- All used to store and dispense goods
- Previous buildings on same site with similar uses

Artifacts found near doorways or in dump sites outside buildings

Ceramics



Tobacco Pipes



Artifacts found within a building, under where
loosely placed floorboards existed

Munitions (Grapeshot)



Beads



Methodology 1970's & 2000's

- Unit sizes and measurement systems vary.
- Excavation techniques change with time and conservation ideals.
- Large discrepancy in the numbers of artifacts.

2001 Sale Shop Artifact Distribution (interior artifacts)

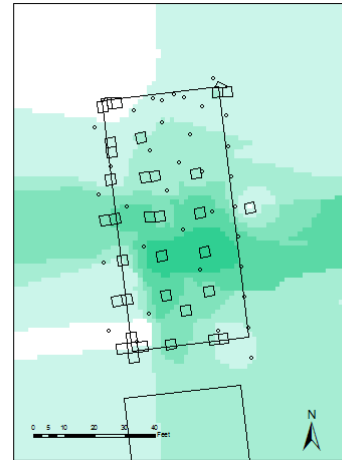
Legend

- saleshop1970spts_Merge
- Sale_Shop_2001_Units
- new store outlinecaywood
- old store outlinecaywood
- sales shop outlinecaywood

BandS2001

<VALUE>

- 3.920280905 - 50.96365177
- 50.96365178 - 148.9706744
- 148.9706745 - 282.2602252
- 282.2602253 - 552.7596077
- 552.7596078 - 999.6716309



1970's & 2001 Sale Shop Artifact Distribution (interior artifacts)

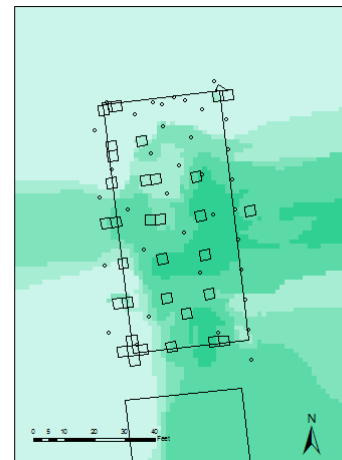
Legend

- saleshop1970spts_Merge
- Sale_Shop_2001_Units
- new store outlinecaywood
- old store outlinecaywood
- sales shop outlinecaywood

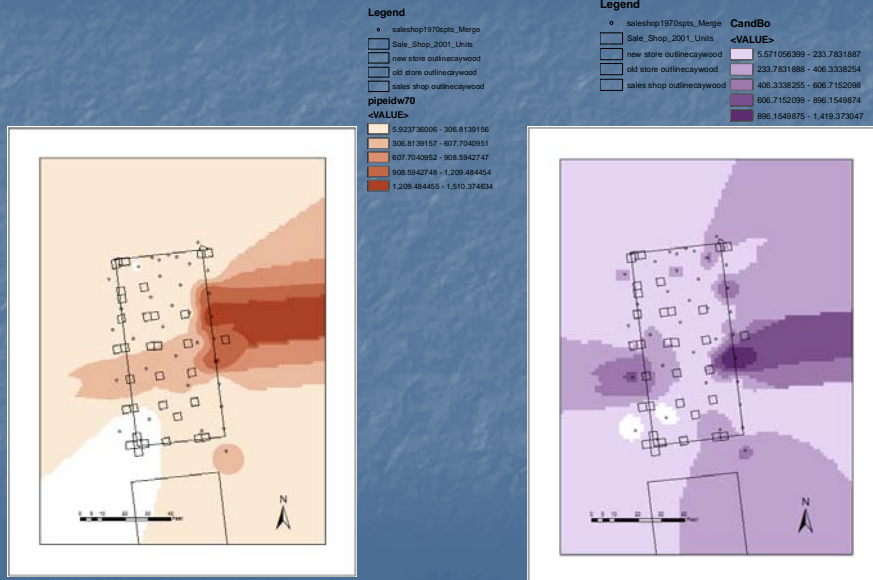
ReclassBandS702001

VALUE

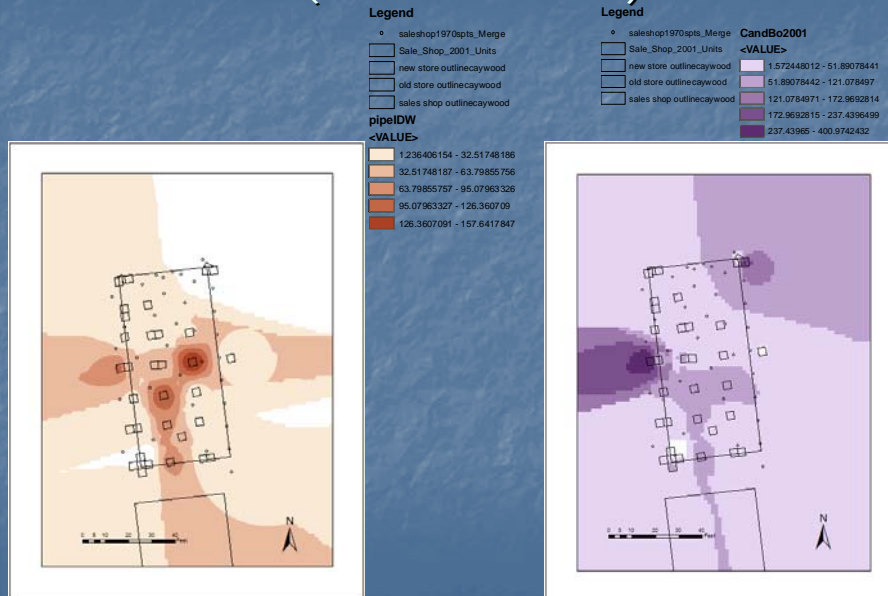
- 1 - 2
- 2.000000001 - 3
- 3.000000001 - 4
- 4.000000001 - 6
- 6.000000001 - 10

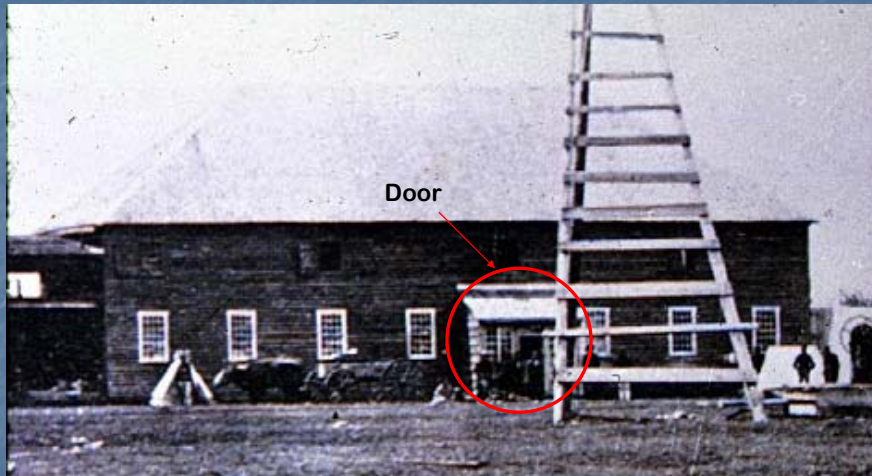


1970's Sale Shop Artifact Distribution (exterior artifacts)

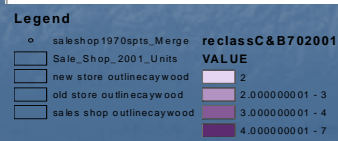
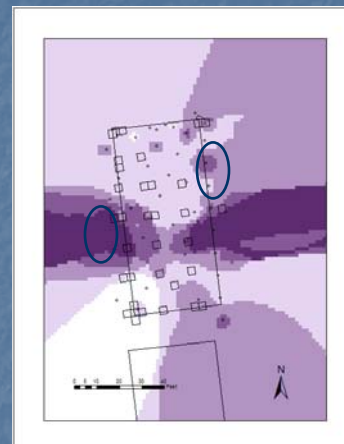
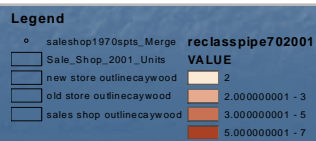
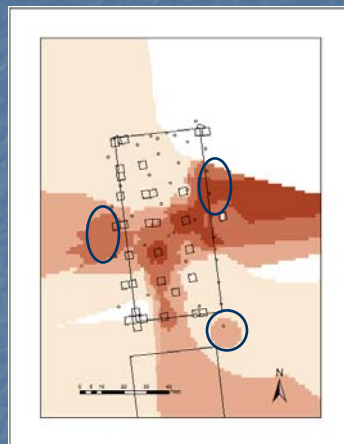


2001 Sale Shop Artifact Distribution (exterior artifacts)

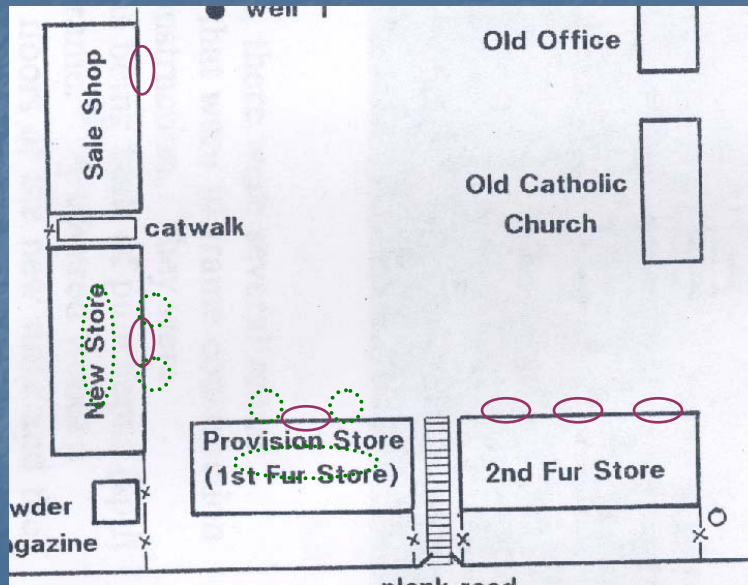




1970's & 2001 Sale Shop Artifact Distribution (exterior artifacts)



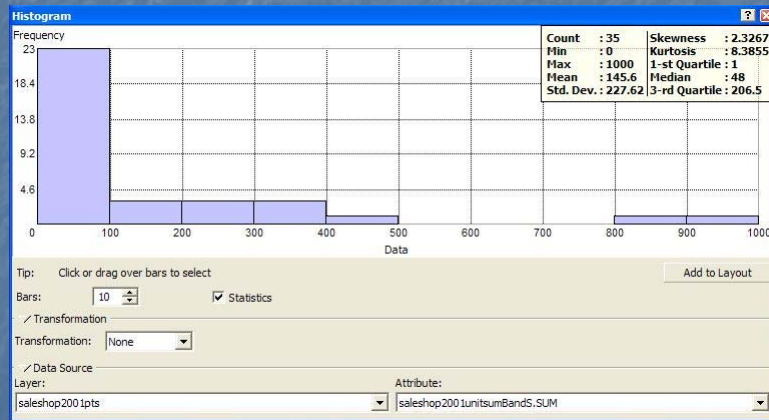
Store Doors



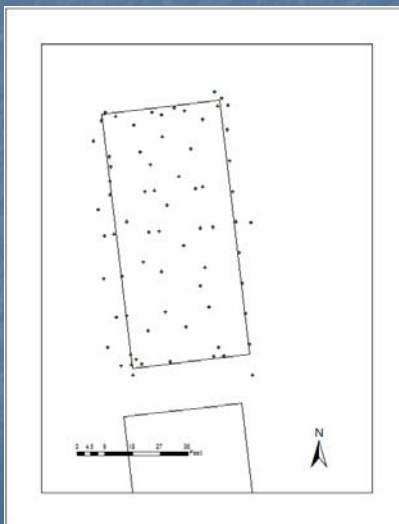
Conclusions

- There is a limitation to my knowledge of GIS and making it suit this purpose.
- I need to normalize or transform the data in a way that can be processed by GeoStatistical Analyst to create a workable model.

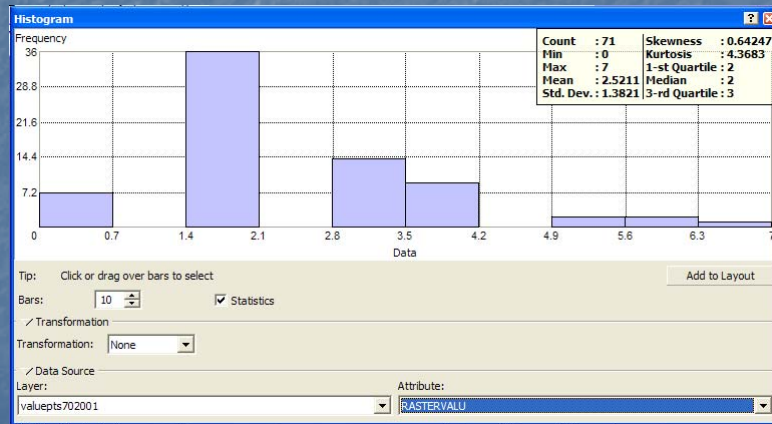
Not Normally Distributed Data



Merged All Sale Shop Points



After Extracting Point Values



Limitations, further questions

- Data available
- Excavation Unit Size
- Physical Building Differences
- Statistics
- Data Analysis of Reclassified Data
- Further Study when excavations of new buildings occur.

Questions? Comments? Suggestions?

Sources

- ❖ Fort Vancouver National Historic Site,
National Park Service, Department of the Interior
- ❖ Fort Vancouver National Historic Site,
Cultural Landscape Report: VI
- ❖ Fort Vancouver National Historic Site,
Historic Structures Report: Historical Data V. 1