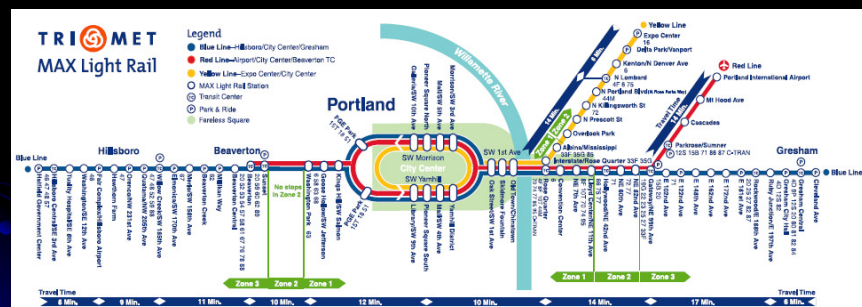


Determining the Best Route for a SE Portland Light Rail Line

Seth Bergeson
Chris Rowlette



Existing MAX Lines



Proposed New Lines

- I-205
 - 6.5 Miles between Gateway TC and Clackamas Town Center
 - September 2009
- Milwaukie – South Corridor
 - 6.5 Miles
 - PSU to Lake Rd
 - 2014??



Goal: Find the best route for a new SE Portland line connecting I-205 green line and proposed Milwaukie Line



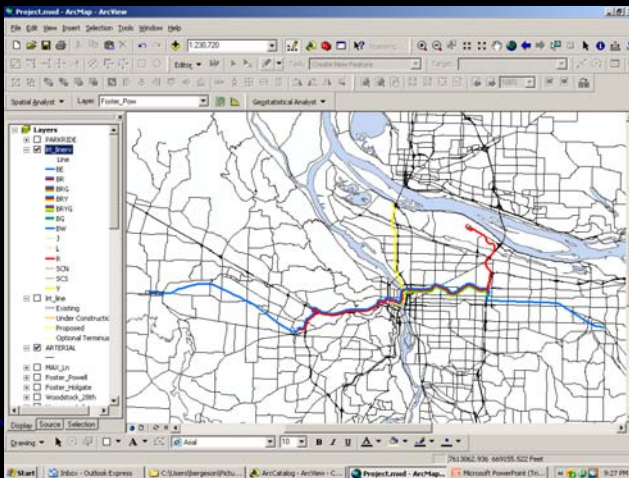
GIS Multi-Criteria Evaluation

- Use GIS to determine best new SE Portland route
- Data
 - RLIS Data
 - USGS National Elevation Data
 - 2000 US Census Data



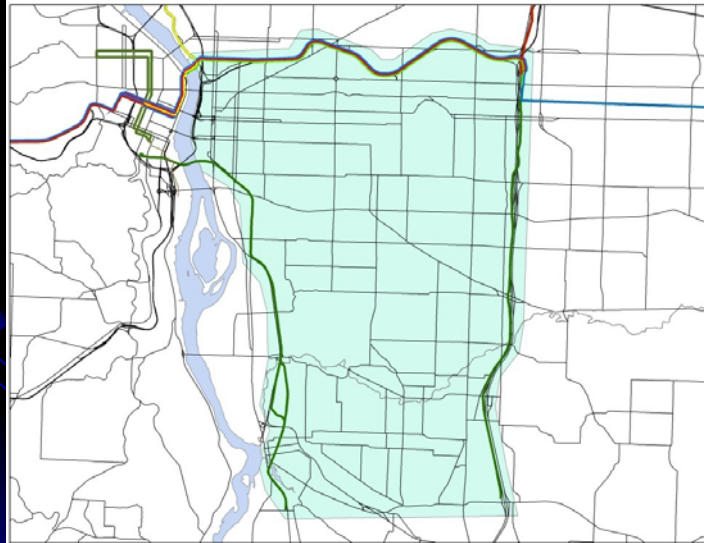
RLIS Data

- Existing MAX Line routes
- Arterial Streets
- Taxlots



Study Area

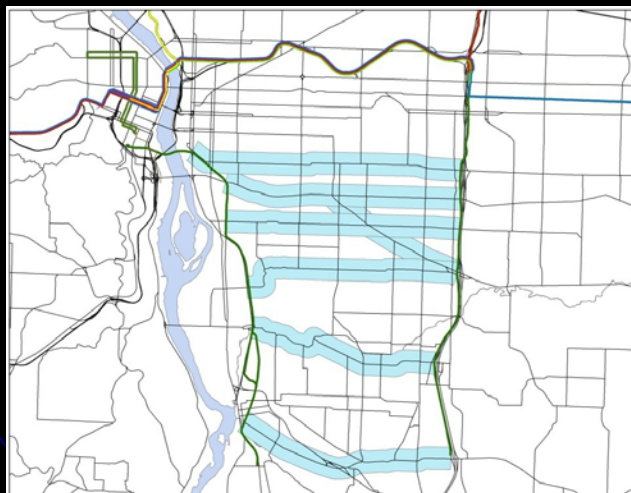
Used to clip all vector and raster data layers



Proposed Route Selection

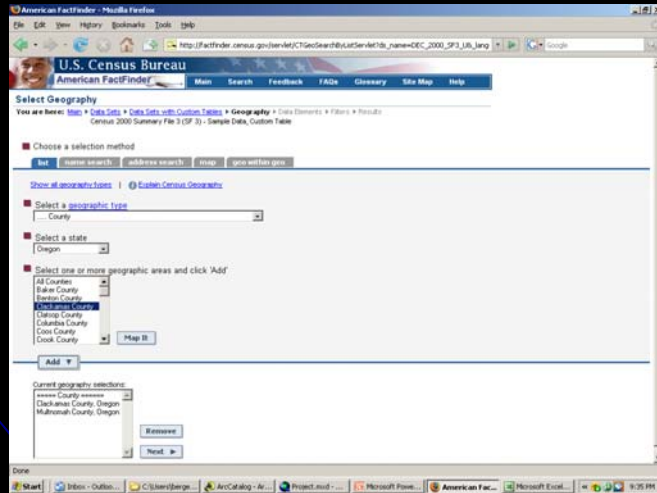
- Division
- Powell
- Powell – Foster
- Holgate
- Holgate – Foster
- Woodstock – 28th
- Johnson Creek
- Harmony – Lake

Interested in qualities
1000' on each
side of routes
- 1000' buffers



US 2000 Census Data

- Census 2000 Summary File 3 Sample Data (SF-3)
- Median Household Income
- Number of people over the age of 16
- Number of people who drive to work

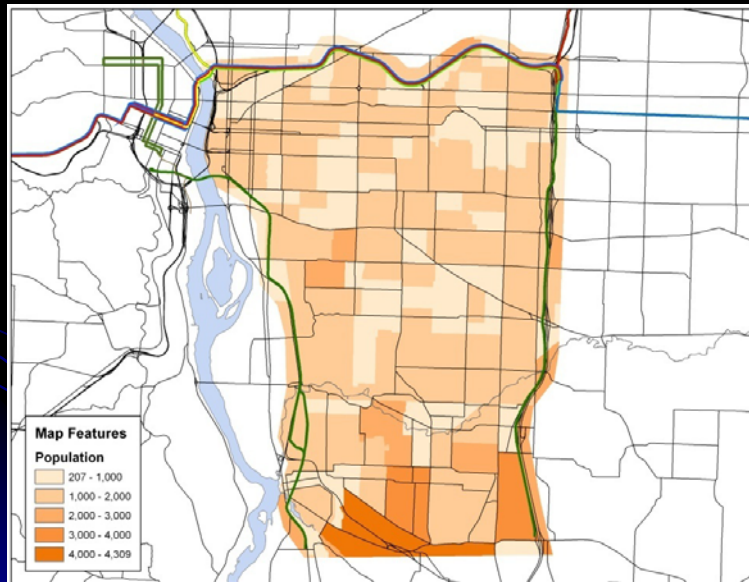


US 2000 Census Data

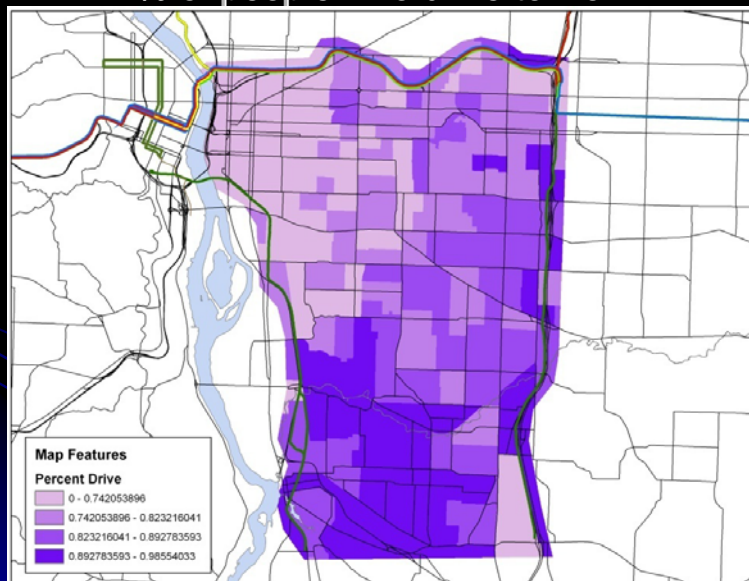
- Calculated % of people over the age of 16 who drive to work

GEO_ID	GEO_NAME	PO00001
15000US410510001001	150 Block Group 1, Census Tract 1, Multnomah County, Oregon	Workers 16 years and on
15000US410510001002	150 Block Group 2, Census Tract 1, Multnomah County, Oregon	
15000US410510001003	150 Block Group 3, Census Tract 1, Multnomah County, Oregon	
15000US410510001004	150 Block Group 4, Census Tract 1, Multnomah County, Oregon	
15000US410510001005	150 Block Group 5, Census Tract 1, Multnomah County, Oregon	
15000US410510001006	150 Block Group 6, Census Tract 1, Multnomah County, Oregon	
15000US410510001007	150 Block Group 7, Census Tract 1, Multnomah County, Oregon	
15000US410510002001	150 Block Group 1, Census Tract 2, Multnomah County, Oregon	
15000US410510002002	150 Block Group 2, Census Tract 2, Multnomah County, Oregon	
15000US410510002003	150 Block Group 3, Census Tract 2, Multnomah County, Oregon	
15000US410510002004	150 Block Group 4, Census Tract 2, Multnomah County, Oregon	
15000US410510003011	150 Block Group 1, Census Tract 3.01, Multnomah County, Oregon	
15000US410510003012	150 Block Group 2, Census Tract 3.01, Multnomah County, Oregon	
15000US410510003013	150 Block Group 3, Census Tract 3.01, Multnomah County, Oregon	
15000US410510003021	150 Block Group 1, Census Tract 3.02, Multnomah County, Oregon	
15000US410510003022	150 Block Group 2, Census Tract 3.02, Multnomah County, Oregon	
15000US410510003023	150 Block Group 3, Census Tract 3.02, Multnomah County, Oregon	
15000US410510003024	150 Block Group 4, Census Tract 3.02, Multnomah County, Oregon	
15000US410510003025	150 Block Group 5, Census Tract 3.02, Multnomah County, Oregon	
15000US410510003026	150 Block Group 6, Census Tract 3.02, Multnomah County, Oregon	
15000US410510003027	150 Block Group 7, Census Tract 3.02, Multnomah County, Oregon	
15000US410510004011	150 Block Group 1, Census Tract 4.01, Multnomah County, Oregon	
15000US410510004012	150 Block Group 2, Census Tract 4.01, Multnomah County, Oregon	
15000US410510004013	150 Block Group 3, Census Tract 4.01, Multnomah County, Oregon	
15000US410510004014	150 Block Group 4, Census Tract 4.01, Multnomah County, Oregon	
15000US410510004021	150 Block Group 1, Census Tract 4.02, Multnomah County, Oregon	
15000US410510004022	150 Block Group 2, Census Tract 4.02, Multnomah County, Oregon	
15000US410510004023	150 Block Group 3, Census Tract 4.02, Multnomah County, Oregon	
15000US410510005011	150 Block Group 1, Census Tract 5.01, Multnomah County, Oregon	
15000US410510005012	150 Block Group 2, Census Tract 5.01, Multnomah County, Oregon	
15000US410510005013	150 Block Group 3, Census Tract 5.01, Multnomah County, Oregon	
15000US410510005014	150 Block Group 4, Census Tract 5.01, Multnomah County, Oregon	
15000US410510005021	150 Block Group 1, Census Tract 5.02, Multnomah County, Oregon	

US 2000 Census Data – Population

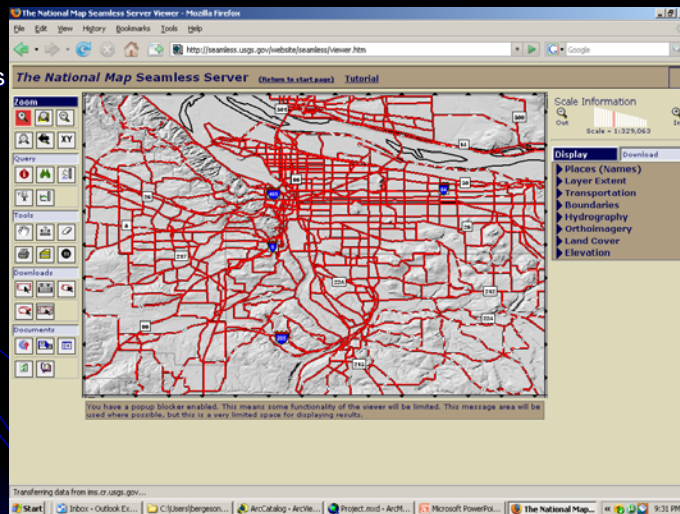


US 2000 Census Data – % of people who drive to work

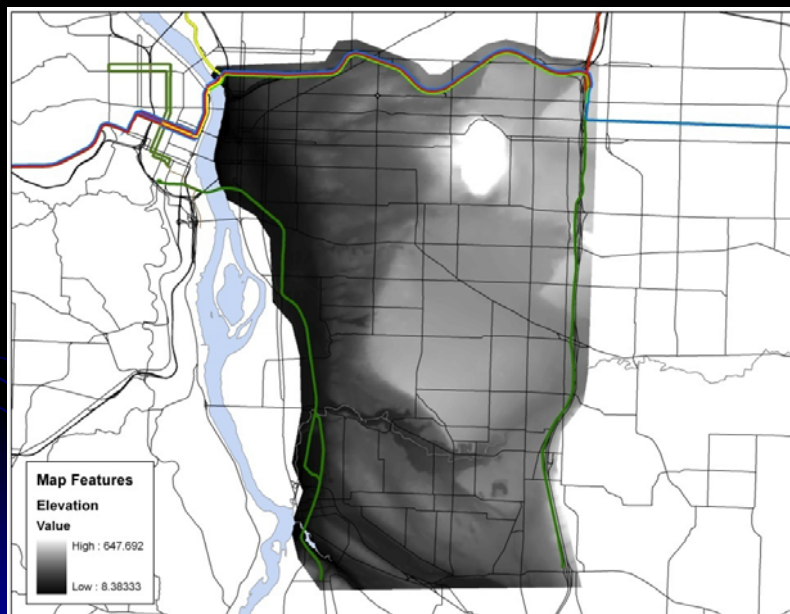


USGS NED

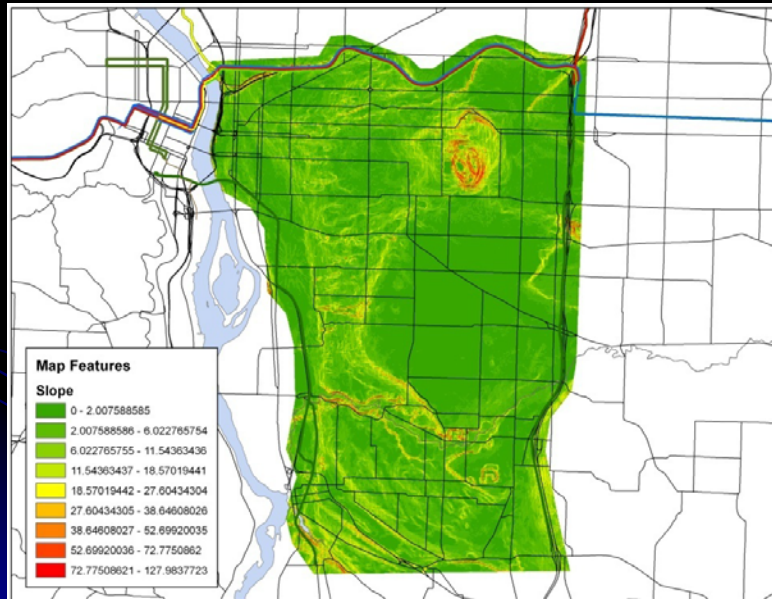
- Downloaded from National Map Seamless Data Server



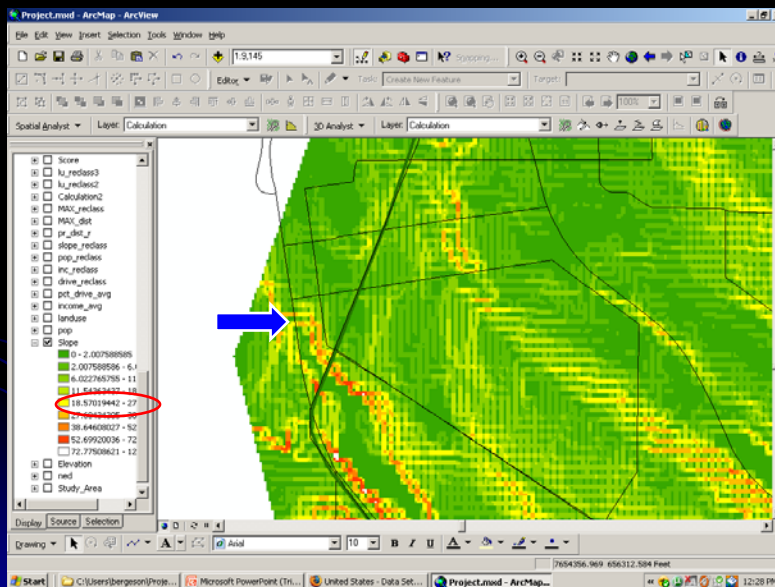
USGS NED - Elevation



USGS NED - Slope



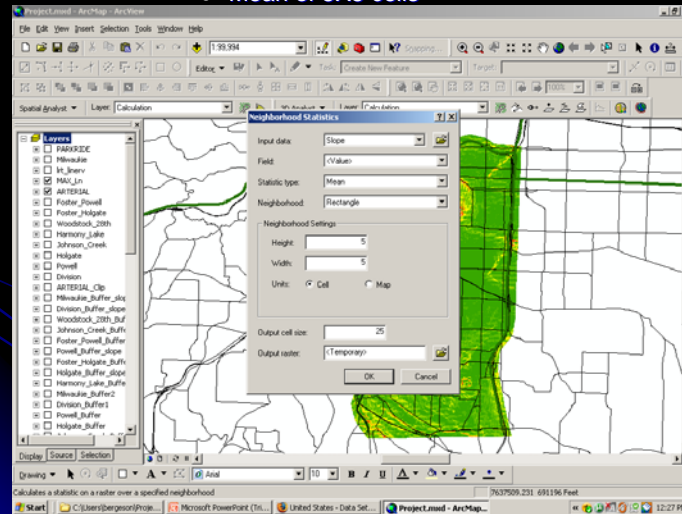
Slope anomalies



USGS NED - Slope

Smoothed out slope raster with
Neighborhood Statistics Tool

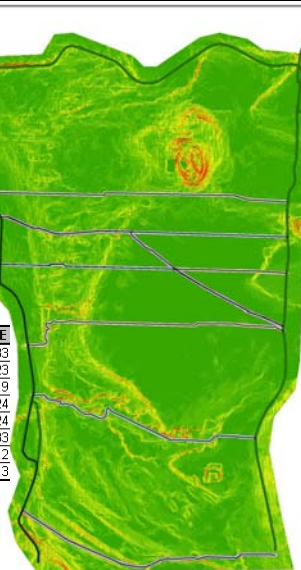
- Mean of 5X5 cells



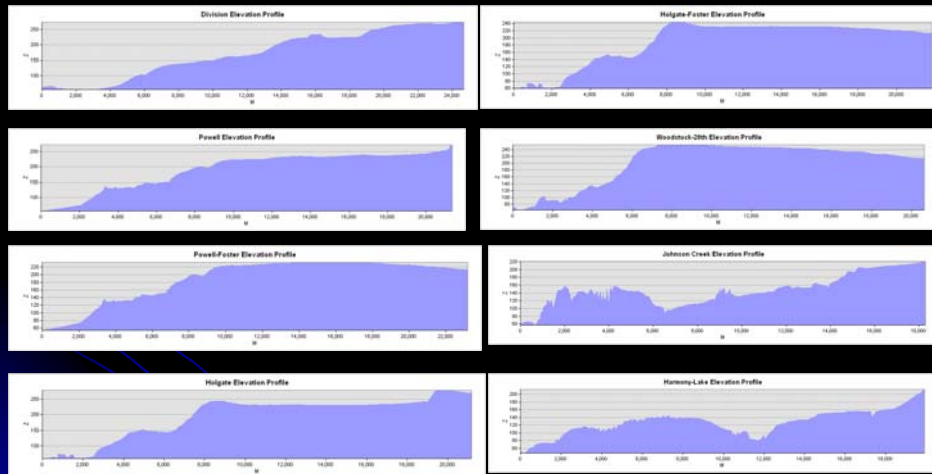
Slope Calculations

- 125' Buffer around routes to calculate slope

ROUTES	MAX SLOPE	AVG SLOPE
Harmony-Lake	33	6.83
Holgate	20.7	2.23
Holgate-Foster	17.6	1.9
Powell	20.6	2.24
Powell-Foster	20.6	2.24
Johnson Creek	16.9	1.83
Woodstock-28th	61.8	8.2
Division	12.3	2.3



Elevation Profiles



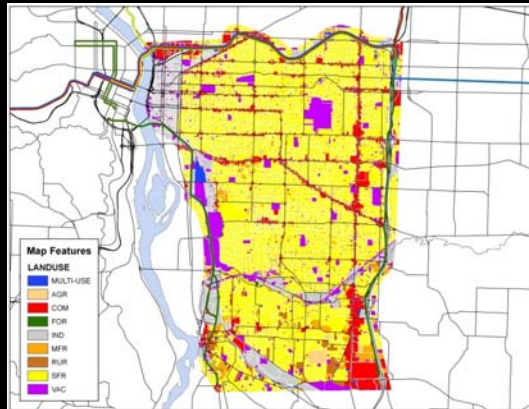
Slope

- Decided not to use slope calculations in AHP
- Instead use as a constraining factor

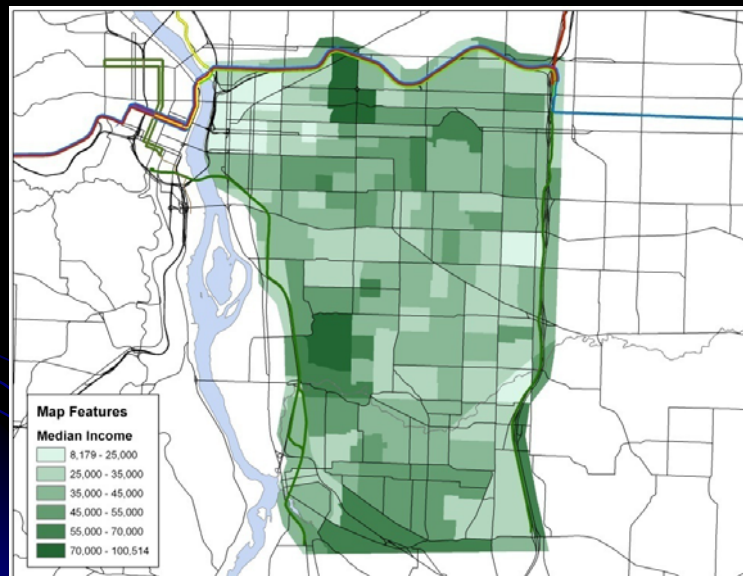


Land Use

- 10 classifications
 - Commercial (10)
 - Multi-Family Residential (9)
 - Single Family Residential (8)
 - Multi-Use (7)
 - Industrial (6)
 - Transportation (5)
 - NoData
 - Vacant (4)
 - Agriculture (3)
 - Rural (2)
 - Forest (1)

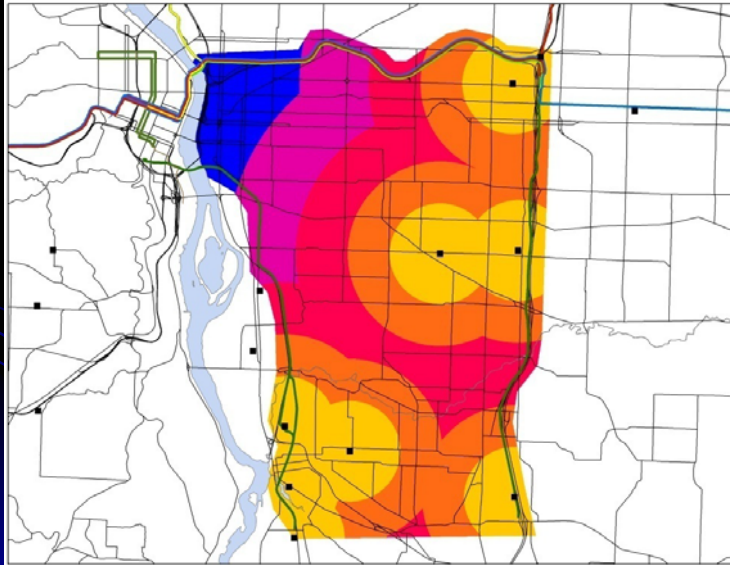


Median Household Income



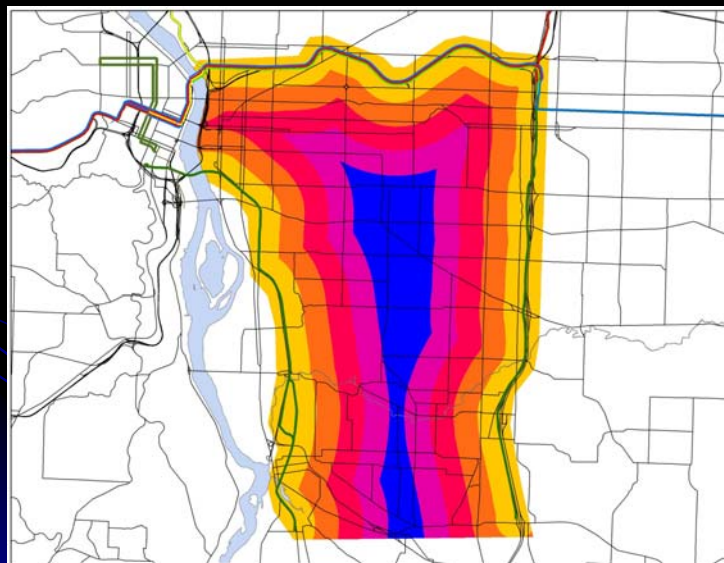
Euclidian Distance

Distance to nearest
Park & Ride



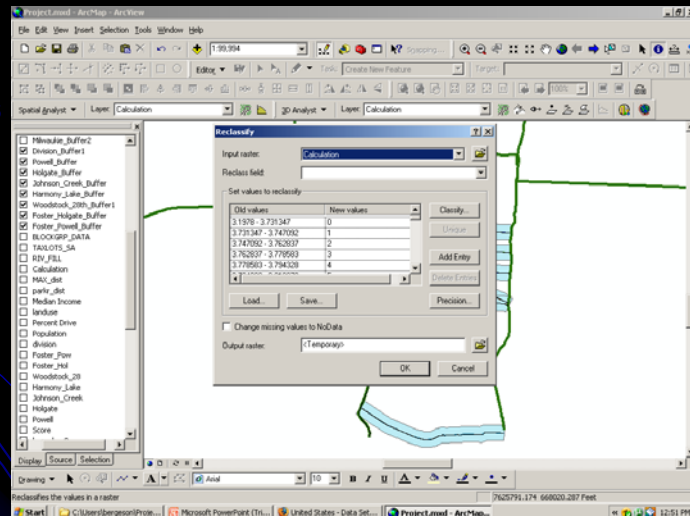
Euclidian Distance

Distance to Nearest MAX Line



Reclassify

- 10 land use categories
- Reclassify all 6 factors to 10 equal interval classifications



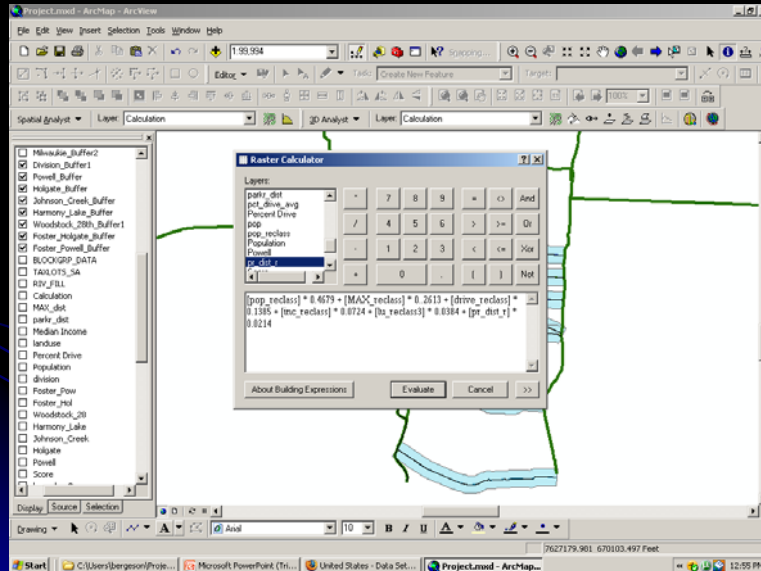
Factor Weights

- Analytical Hierarchy Process
- Pair wise Comparison of 6 factors

	POPULATION	DISTANCE TO MAX	% DRIVE	INCOME	LANDUSE	DISTANCE TO PARK & RIDE		FACTOR
POPULATION	1.00	3.00	5.00	7.00	9.00	11.00	4.671654851	0.467930459
DISTANCE TO MAX	0.33	1.00	3.00	5.00	7.00	9.00	2.608465471	0.261273678
% DRIVE	0.20	0.33	1.00	3.00	5.00	7.00	1.383087554	0.138535233
INCOME	0.14	0.20	0.33	1.00	3.00	5.00	0.723020026	0.072420396
LANDUSE	0.11	0.14	0.20	0.33	1.00	3.00	0.38336716	0.038399492
DISTANCE TO PARK & RIDE	0.09	0.11	0.14	0.20	0.33	1.00	0.214056891	0.021440742
							9.983651973	1

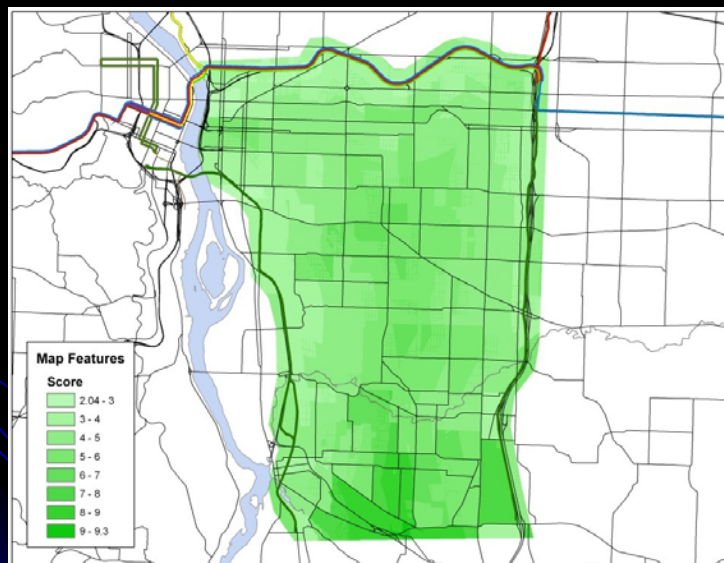
Population reclass x 0.4679 + Distance to
 Max reclass x 0.2613 + Percent drive
 reclass x .01385 + Income reclass x 0.0724
 + Landuse reclass x 0.0384 + Distance to
 Park & Ride reclass x 0.0214

Raster Calculator



Score Calculation

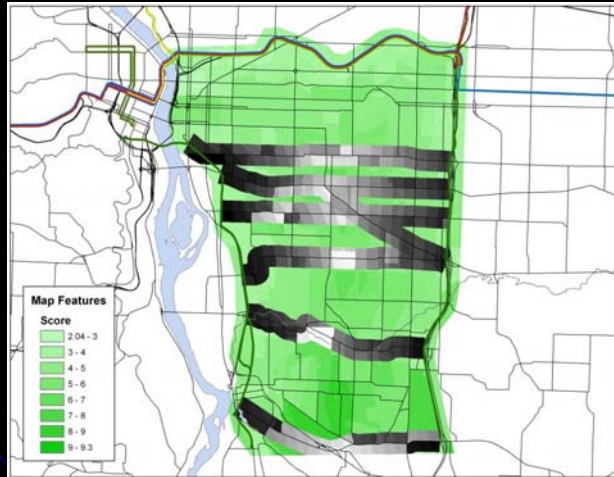
- 1 = bad
- 10=good



Route Scores

- Clipped score raster by 1000 route buffers
- Calculated mean score for each route

ROUTES	SCORES
Harmony-Lake	6.681
Holgate	4.9866
Holgate-Foster	4.926
Powell	4.9201
Powell-Foster	4.8993
Johnson Creek	4.7925
Woodstock-28th	4.5623
Division	4.453

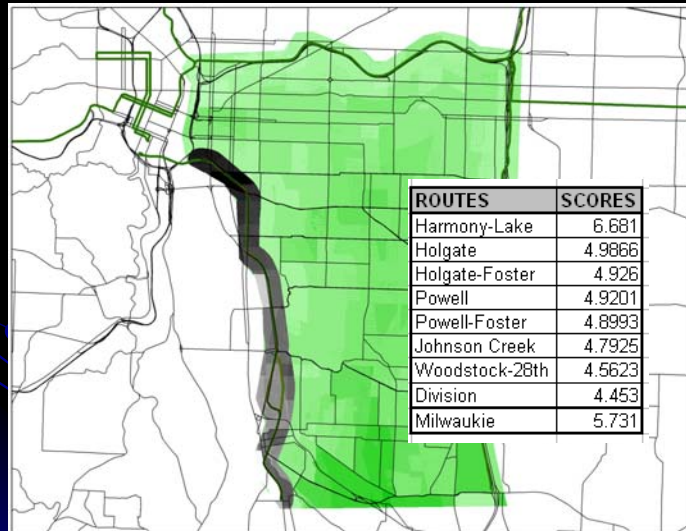


Model Validation

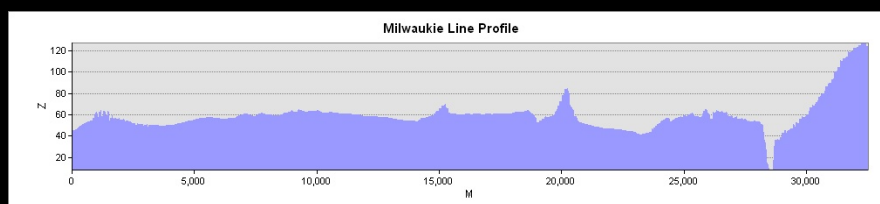
- See how well our AHP model works for proposed Milwaukie line
- Followed same steps as calculations for new routes
 - Recreated distance to MAX lines to exclude Milwaukie line



Milwaukie Route Score



Milwaukie Line Slope



ROUTES	SCORES	MAX SLOPE	AVG SLOPE
Harmony-Lake	6.681	33	6.83
Holgate	4.9866	20.7	2.23
Holgate-Foster	4.926	17.6	1.9
Powell	4.9201	20.6	2.24
Powell-Foster	4.8993	20.6	2.24
Johnson Creek	4.7925	16.9	1.83
Woodstock-28th	4.5623	61.8	8.2
Division	4.453	12.3	2.3
Milwaukie	5.731	44.7	3.69

Further Considerations

- Other factors for MAX line possible route analysis
 - Current train rider levels
 - Cost
 - Public input
 - Neighborhood factors
 - Commuting patterns
 - Future planning/development
 - Environmental factors
 - Infrastructure/Structural factors
 - Train stop locating
 - Future Park & Ride locating
- Different AHP factors



References

- RLIS February 2008
- US 2000 Census Data
http://factfinder.census.gov/home/saff/main.html?_lang=en
- USGS National Elevation Dataset: <http://ned.usgs.gov/>
- Tri-Met: <http://www.trimet.org/projects/index.htm>
- City of Milwaukee:
<http://www.cityofmilwaukee.org/news/2008/webfactsheet/webfactsheet.pdf>