

# Fanno Creek Watershed

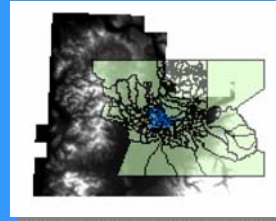
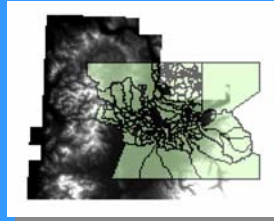
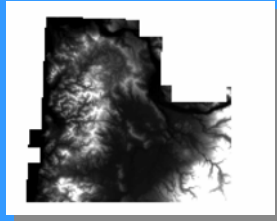


**Exploring watershed  
characterization with ArcMap**  
by Jon Norred

## Data Sources

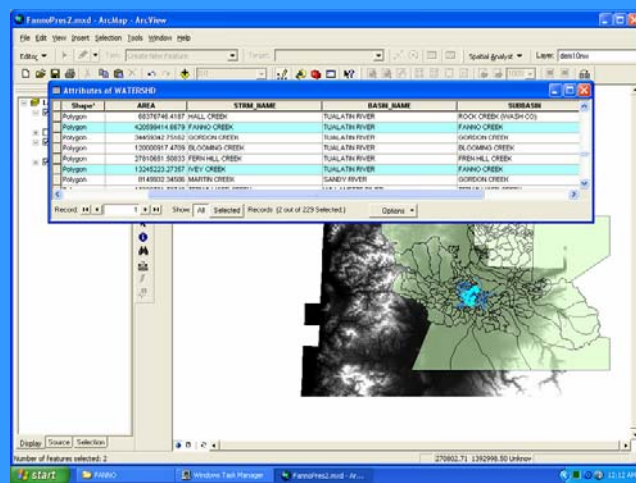
- **RLIS**  
DEM, Landcover, Watersheds
- **NHD**  
Flowline Data
- **USGS**  
Water Quality, Precipitation

# INITIAL DATA LAYERS



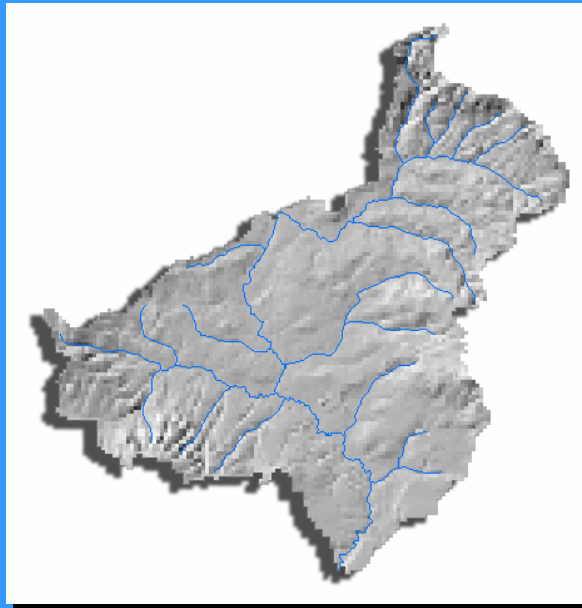
DEM + Watersheds + Flowlines

## Fine Tuning



## Details

- **Select Subbasins**
- **Create New Fanno Layer**
- **Set Extents**
- **Hillshade**



## The Good Stuff

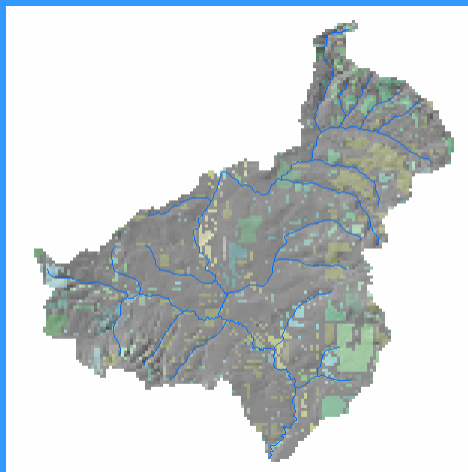
Non Point Source Pollution

Landuse (Impervious surface)

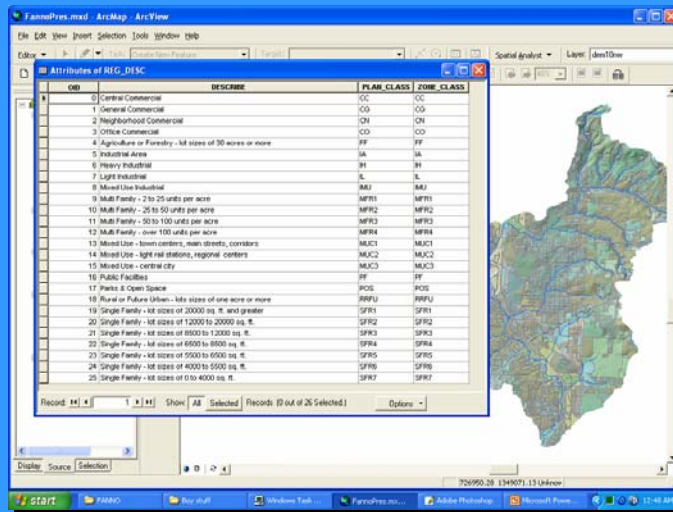
Slope (Runoff)

Connectivity (Effective Impervious Surface)

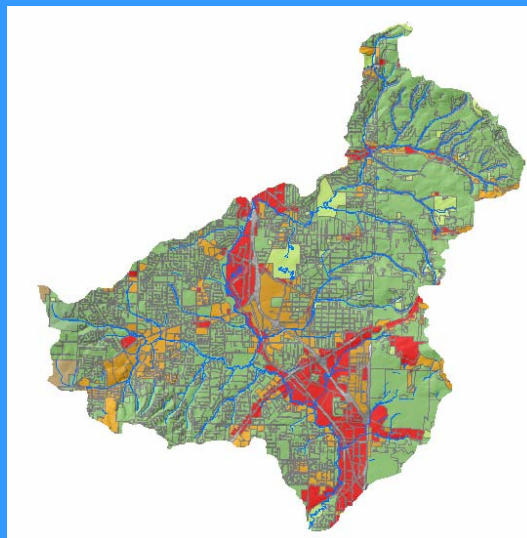
## Zoning



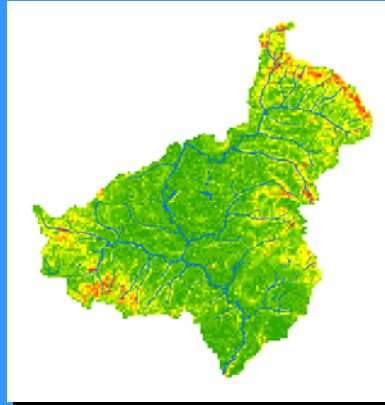
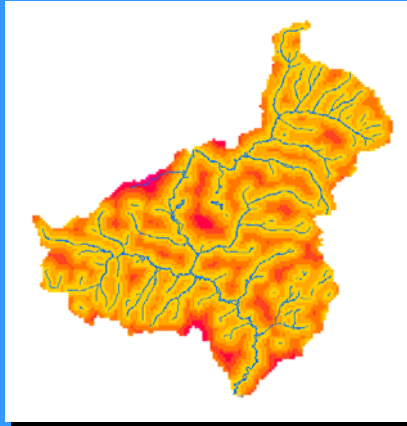
# Reclassified Zoning



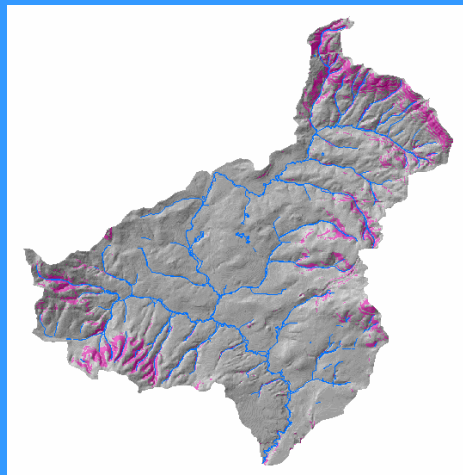
# HOT SPOTS



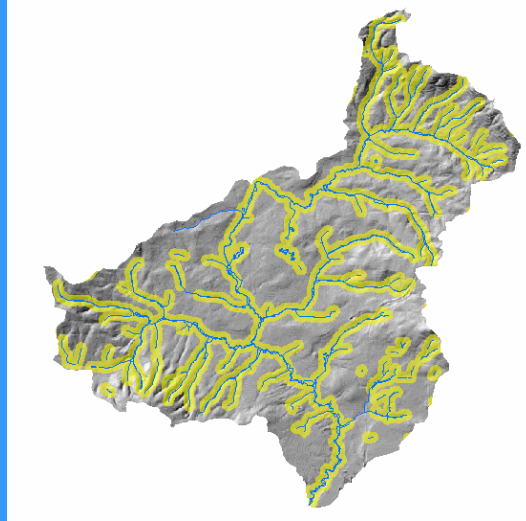
## Distance and Slope



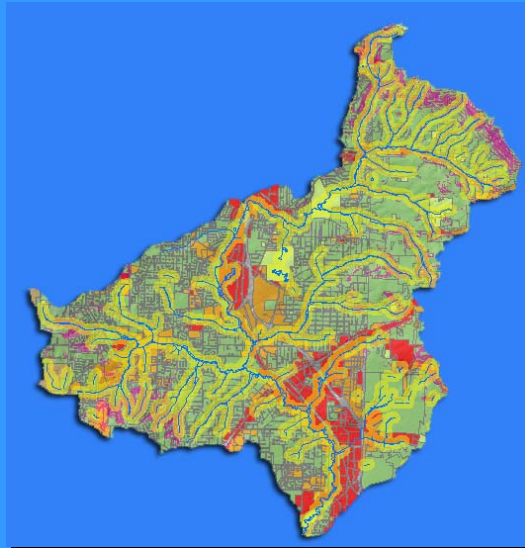
## Slope Hot Spots

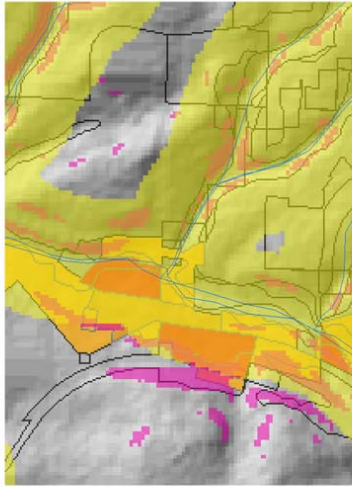


## Distance



## Combination Layers





**THE END**