

Presenter Fin Scorer wbf Date 12 Dec 06 Total Score 5.9 Grade A + 4,3 abv

**German 101 — Scoring Guide for Project K 07 (F2006) Dream Trip**

Rule of thumb for 4/satisfactory: German messages are simple, accurate sentences of 3 or more syntactic units, with frequent use of vocabulary from Kontexte 5-7 where needed, and inclusion of own vocabulary; vocabulary worksheet clearly shows benefit of contextual vocabulary learning and reliable dictionary use; website list consists of at least half of German-language sites and includes several types of content; letter to benefactor describes the proposed trip and also tells about learning German seriously; at least one piece of supporting material (website printout or description of such).

0510-1

	on time (5%)	worksheets: vocabulary (20%)	worksheets: websites (20%)	lodging inquiry (20%)	arrival message (10%)	support kit (10%)	appeal for support (15%)
6	received within 1 week of when the assignment was activated <i>27 Nov</i>	required travel words all correct; most of the other meanings are given; own list has 7 ambitious, accurate words	> 10 websites, most of them in German, several types of content AND clear differentiation within types of content (ex: hotel AND hostel sites)	Expresses the necessities of the message fully and accurately; rich specialized vocabulary; also adds personal elements, such as description of self and intended activities, including special interest.	See left, though customization will necessarily be brief.	Several attractive and balanced pieces of supporting material. Sheer quantity of website printouts or portfolio items is not enough.	Trip is carefully tied to learning German and something else. Trip and learning German are put into a larger educational perspective. Uses a special ploy (offer to show websites; German version of the appeal). Benefactor's heart (if there) melts.
5	later than 6, earlier than 4	1 required word wrong; 3/4 of other meanings; own list mostly ambitious & correct	almost 6	almost 6	almost 6	Plenty of material, but not carefully organized and not all of it of high quality.	almost 5.
4	received on the specified due date <i>6 Dec</i>	5 of 7 required words correct; half of other meanings; own list has 50% ambitious items, most of which are correct	10 websites, half of them in German, with several types of content (travel, accommodations, special interest)	Clear Intermediate-Low sentence creation with adjustment of structures. Accurate, broad use of K5-7 vocabulary when needed. Includes some individualized vocabulary.	See left, although vocabulary will be modest due to shortness of message	One attractive piece of supporting material (interesting, German-language web printout; work from portfolio).	The letter could be mistaken for the real thing, but does not make a strong case (tone not serious, ideas rather indefinite, vague causality). Instructor could write support letter with a clean conscience.
3	later than 4, but in time to be graded	almost 4	almost 4	almost 4	almost 4	One usable piece of supporting material.	almost 4
2	n.a.	Missing some required words, and some others wrong. Own list mostly words from the core materials.	6 or fewer sites, some German but some English and easily found	Brief (half the specified length), with mixture of fragments and distorted sentences. K5-7 vocabulary used, but with frequent mistakes.	See left.	One piece of supporting material, but it is not likely to be effective (train schedule printout, isolated picture, heap of plain text).	Brief, half-hearted, vague, and poorly worded letter that is clearly not a serious effort.
1	n.a.	A few items in both parts, many of them wrong	a few easily found sites, mostly in English	A few words are accurate, the rest is either miniscule or, if wordy, heavily distorted.	See left.	Nothing, or else one piece of supporting material that is essentially useless.	Nothing there, or else a very short and sloppy message.

**Project K07 "Meine Traumreise" • "My Dream Trip"**

**Vocabulary (15+ items).**

A. The words in the chart below have multiple meanings. Choosing the wrong German equivalent can easily lead to miscomprehension and even embarrassment.<sup>1</sup> For the English words find the German word that relates to travel. Then contrast it to one or more other German equivalents of the same word that mean very different things.

	travel word	other word #1	other word #2
Example: "customs"	at the border <b>Zoll</b>	ways of doing things in an entire culture <b>Sitte, Tradition</b>	personal ways or habits of doing things <b>Gewohnheiten</b>
reservation	of hotel, etc. RESERVIERUNG	limitation, ANFORDERUNG requirement VORBEHALT	where some Indians live RESERVAT
advance	ahead of time (in advance) IM VORHAUS	money received ahead of time VORSCHUSS O. VORSCHIEßEN	to go forward VORANGEHEN VORRÜCKEN VORANKOMMEN
deposit	a partial pre-payment ANZAHLUNG (DOWN PAYMENT)	to make a partial pre-payment ANZAHLUNG LEISTEN ANZAHLUNG MACHEN	a substance left on something ABLAGERUNG
cancel	to decide not to do something ABSAGEN	to place a mark on something AUFLEGEN/KLATZEN AUF + ACC	DELETE: DURCHSTREICHEN
pick up	to fetch someone HOLEN O. MITNEHMEN	to lift up HOCHHEBEN	to clean up AUFRÄUMEN

B. The following words are ambiguous in English with regard to part of speech. Each can be either a noun or a verb. (Example of verb-noun ambiguity: "You can file [verb] this file [noun].") Choosing the wrong German equivalent will not likely cause embarrassment or downright miscomprehension, but your language will come across as very distorted. For each word list both of its *travel-related* equivalents in German (ex: "drive" (noun) - word for a "drive" in the country, NOT the word for a "driveway").

	stay	delay	drive
verb (action)	BLEIBEN	AUF SCHIEßEN	FAHREN
noun (thing)	AUFENTHALT	VERSPÄTUNG (AUF SCHÜß)	TREIBEN / FAHRT

C. Your special vocabulary - add 7 or more words that are specific to travel or your special interest for making the trip. Indicate the source where you found the word, so we can correct errors.

word (English)	word (German)	source (dictionary, WWW, etc.)
TRAVEL AGENT	REISEBÜROKAUF	DICTIONARY (HARPER COLLINS)
CAMPING SITES	CAMPINGPLÄTZE	WWW.CAMPING10.COM
TENT	ZELT	" "
NATIONAL PARK	NATURPARK(E)	WWW.NATURPARK-SPW.DE
SLEEPING BAG	SCHLAFSACK	DICTIONARY
HIKE	WANDELN	WWW.CAMPING10.COM
SWIMMING	SCHWIMMEN	" "
EXCHANGE \$	WECHSELN	DICTIONARY
FOREST	WALD	" "
WILDERNESS	WILDNIS	" "
PLANT	PFLANZE	" "
STREAM/BROOK	BACH	" "
FERN	FARN	" "
MOUNTAIN	BERG	" "

<sup>1</sup> A true-life example going from German to English: A German travel website has a link labeled "sofort buchen." An automatic translator converts this to "instant beeches" (the tree, not the seaside). The verb "buchen" means "to book, reserve." The noun "Buche," whose plural is "Buchen," means "beech tree."  
 FERN FARN  
 MOUNTAIN BERG

Project K07 "Meine Traumreise" • "My Dream Trip"

List of Websites consulted (10+ items).

address (assume http://www.)	brief name	description
im-web.de	Im Web Deutschland	Travel and business resources in N. Germany
https://zimmer.im-web.de	Online Buchen!	Fill out form to book accommodations: dates, people traveling, kind and size of accommodation
abenteuerhof.at	Abenteuerhof Schiefer	"adventure" inn with winter & summer sports, including archery and horse-drawn sleighing; info about facilities, activities, prices, room layouts
CAMPING0.COM/BAVARIA-CAMPING.HTM	"WORLD WIDE CAMPING GUIDE"	"CAMPING IN BAVARIA" BROUGHT UP AN EXTENSIVE LIST W/ SYNOPSIS IN ENGLISH & LINKS TO GO TO GERMAN CAMPING WEBSITES
EXPEDIA.DE	FLUGBUCHEN	GERMAN VERSION OF EXPEDIA OFFERS HOTEL & AIR BOOKING
RAILEUROPE.COM	TRAIN TIX & PASSES	EXTENSIVE ONLINE BOOKING SITE FOR US RESIDENTS TO BOOK TIX & PASSES FOR EUROPEAN TRAINS
COMETOGERMANY.COM	TOURIST WEBSITE	INFO ABOUT GERMANY, CULTURE, EVENTS, NATURE, ACTIVITIES, TRAVEL, ETC, ETC
MUENCHEN.DE	TOURIST WEBSITE	"1" BUT ALSO BUSINESS, SHOPPING, & LIVING VS. TRAVELING IN MUNICHEN
AHA-INTL.ORG	STUDY ABROAD	KÖLN PROGRAM INFORMATION - PRICES, DATES, COURSES, & MORE FROM A-Z!!
MUNICH-INFO.DE	TOURIST WEBSITE	OVERVIEW OF MUNICHEN'S CULTURE, CITY, & TRAVEL INFO - ALSO ONLINE BOOKING
ABOUT-GERMANY.ORG	TOURIST WEB SITE	ABOUT CITIES, REGIONS, CULTURE, LANGUAGE LEARNING, TRAVEL TIPS.
BAVARIA.DE	TOURIST SITE	OVERVIEW OF POLITICAL LIFE, LAND & PEOPLE, ECONOMY, EDUCATION, VACATION & TOURISM.
MUNICHX.DE	TOURIST SITE	FOUND AN EXTENSIVE LISTING OF "MESSER UND TRINKEN" ON THIS SITE.
HEISE.DE/SYSTEMS/WIRTSCHAFT	ONLINE BUCHEN	PROVIDES A LIST OF LINKS TO BOOK VARIOUS ACCOMMODATIONS - HOTELS, PENSIONS, ETC.
BED-AND-BREAKFAST-DE/SRUHE.HTM	HOTEL BUCHEN	BED & BREAKFAST ONLINE BOOKING SITE FOR ALL OF GERMANY W/ TIX & TINTS
BATHN.DE	ONLINE BUCHEN	BOOK TRAINS & LOOK UP INTO SCHEDULES FOR ALL OVER EUROPE
SPIEGEL.DE	TOURIST	HIGHLIGHTS, EVENTS, CUSTOMS, NEWS, POLITICS, TRAVEL TIPS & TINTS.
NATUREPARK-SFW.DE	NATURE PARKS	EXTENSIVE GUIDE & INFO TO ALL OF THE NATURE PARKS IN DEUTSCHLAND

WATTENBERG - NATIONALPARK.DE

NATIONAL PARKS

u EXCEPT 18 PAGE GUIDE TO NATIONAL PARKS IN GERMANY

7G  
4E  
4 G/E

Great examples  
of how to do this!

0510-4

### INQUIRY

Hallo, mein Name ist K \_\_\_\_\_ und ich reise in Deutschland von März bis Juni. Es ist meine erste Zeit in Deutschland und ich glaube es ist sehr fantastisch dort! Ich möchte in Ihr Hotel für drei Nächte übernachten mit mein Freund Ai \_\_\_\_\_. Wir sind in München von der 25 bis der 28 Juni, und dann wir gehen nach Bad Tölz.

friend is  
indeed  
male

Wir brauchen ein Doppelzimmer mit eigener Dusche, bitte. Auch, Ihr Website sagt, "Unser Frühstück ist das beste in all München!", also wir möchten Frühstück all Morgen natürlich!

Ich verstehe im Sommer es ist die beste Zeit für reisen, so viele personen möchten in Ihr Hotel übernachten. Wenn Sie haben kein Doppelzimmer mehr, Andreas und ich können in ein Einzelzimmer übernachten. Wir brauchen noch eine Dusche und Frühstück, bitte. Auch, wir sind Nichtraucher.

Wieviel kostet drei Nächte in Ihr Hotel für zwei personen? Mit Frühstück? Haben Sie noch Doppelzimmer frei in Juni?

Ist das

Danke für alles! Bis Sommer!!

### NOTICE OF ARRIVAL

Hallo und Guten Morgen!

Mein Name ist \_\_\_\_\_ und ich bin mit mein Freund A \_\_\_\_\_ sind in Innsbruck heute, aber wir reisen nach München in 2 Stunde. Wir reservierung in Ihr Hotel für drei Nächte von der 25 bis der 28 Juni. In ein Doppelzimmer mit eine Dusche wir übernachten.

or gemacht here

Wir haben gemacht

Wir sind in München um 3 Uhr , ist das ok?

Danke und bis Tag!!



0510-5

Dear Family-

As 2007 quickly approaches, I have come to realize there are many dreams and aspirations I have yet to share with you, but where to start? Perhaps my largest (and most difficult) New Year's aspiration has something to do with a beautiful country named Germany.

As many of you are well aware, I have been in the process of applying to and researching a study abroad program in Köln, Germany. This program would allow me to live with a German family for 3 months while studying in the Carl Duisberg Centre amidst local and international students in downtown Köln. I would take 4 business classes and one intensive German language class. The program also includes a weekend trip to Brussels, Belgium and Maastricht, the Netherlands to visit companies and various cultural centers. Not only will I progress in my business and international degree, but my German language skills will rapidly improve by partaking in this program.

Of course, I must balance work and study with a bit of play! That's where Andreas enters the picture. Once I finish my term in beautiful Köln, I will then venture south by train to meet Andreas in the München airport. Together, we will travel a bit further south, until we arrive in Innsbruck, Austria. There we will stay in a quaint little inn for 3 nights, enjoying the much needed rest and relaxation. Afterwards, we will head north again, back to München to give ourselves a chance to bask in the grandeur and beauty of one of Germany's most well known and popular cities.

Since most of Andreas' family lives in and around southern Germany near his home town, Bad Tölz, his parents insisted we stay in the "Vogel Family" apartment so that we won't have to travel far to visit everyone. We had planned on vacationing in Bad Tölz this past September, but the plane tickets and car rental proved to be a bit too expensive. We were sad and very disappointed the trip didn't pan out, as was his family. However, by studying in Köln and vacationing in Bavaria, Andreas and I will be able to make up for September. His aunt and uncle, who live in Bad Tölz, can't wait to take us on a camping trip so that I can experience first-hand the breathtaking beauty of the surrounding mountains and lakes. They are passionate hikers, so Andreas and I will get plenty of exercise to work off all the bratwursts and cheese fondue!! We plan to visit all 6 of his living relatives (compared to our 300+!!!), so I'm sure his relatives and friends will show us a good time and of course stuff us with more brats, beer, and wine!

As I hope you can now understand, studying and traveling in Germany next spring is a golden opportunity that I don't want to miss! A few of you already know that Andreas and I plan on moving to Bad Tölz with his parents in the next 5-7 years. This reason alone has a lot to do with why I want to study and travel in Germany. This experience is key in figuring out how well I like Germany, how easily I am able to adapt, and also to see if Bad Tölz is a place I could settle down in.

Now that you know what my New Year's resolution is, here is my Christmas wish: please send money instead of gifts. I love the gifts everyone gives, but I have a much greater need right now for financing this trip. Any amount you send will be very much appreciated. I thank all of you!!

Merry Christmas and a Happy New Year!!

I

# Am Gipfel der Erholung

365 Tage im Jahr  
wohlfühlen

natürlich



erfrischend



aktiv



**B**ad Feilnbach genießt den Ruf als „**Bayerisches Meran**“. Und das völlig zurecht. Denn unsere Region am Fuße des Wendelsteins ist bekannt für ihr mildes Klima, die vielen Sonnenstunden im Jahr und die wunderschöne Landschaft.

**M**itten im größten zusammenhängenden Obstanbaugebiet Süddeutschlands liegt unser komfortabler 4-Sterne **Tenda Camping+Freizeitpark**. Mit seinen großzügigen Stell- und Freiflächen ist diese familienfreundliche Anlage Sommer wie Winter eine ideale Anlaufstelle für Ihren erholsamen Urlaub.

**V**or den Toren des staatlich anerkannten Moorbads und Naturheildorfs Bad Feilnbach können Sie sich auf den überwiegend in Kreisen angeordneten Stellplätzen mit ihren Baumgruppen und Hecken perfekt erholen. Unser Team berät Sie gerne über die vielfältigen Freizeitangebote und Veranstaltungen in der Region.

**W**anderungen, Ausflüge und Radtouren „rund um den Wendelstein“, das Wahrzeichen Bad Feilnbachs, lassen die Zeit wie im Fluge vergehen. Wenn Sie sich für Kultur interessieren, dann finden Sie viele außergewöhnliche Sehenswürdigkeiten in der

malerischen Umgebung.

**J**üngere Besucher werden unseren Camping- und Freizeitpark aber nur ungern verlassen, denn mit Bolzplatz, Freitischtennis, vielen Spielgeräten und einer mitreißenden „Happy-Family-Animation“ im Juli und August ist für den Camper-Nachwuchs einiges geboten.

**D**er nächste Golfplatz ist nur sechs Kilometer entfernt, eine Kutschfahrt in's Feilnbacher Moos ist zudem ein Erlebnis für die ganze Familie.

0510-6  
Ideal für Kur und Urlaub  
**TENDA**  
Camping ★★★★★ Freizeitpark

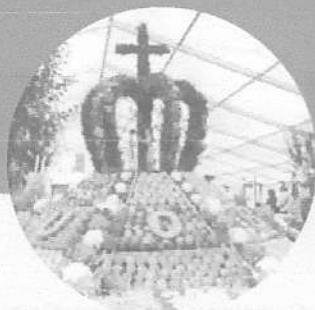


www.tenda-camping.de

**Wir wünschen Ihnen erlebnisreiche und erholsame Tage.**



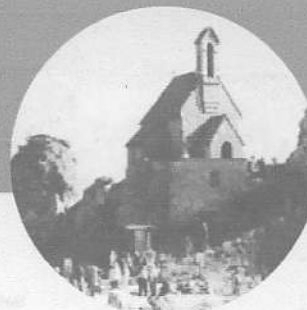
Ihre  
Familie Thoma



**W**ir haben das ganze Jahr für Sie geöffnet. Kommen Sie z. B. zu Bayerns größtem Apfelmarkt nach Bad Feilnbach, jedes Jahr im Oktober.



**R**adelspaß für alle Leistungsklassen ist garantiert. 150 km bezaubernder Radwege rund um Bad Feilnbach warten auf Sie.  
Wir sind Bett & Bike-Partner.



**E**rwandern Sie die Naturschönheiten unserer Umgebung und unternehmen Sie Touren rund um unseren „Hausberg“, den Wendelstein.

ganzjährig

Camping

Kur

Wellness

Bewegung

Ausflüge

Urlaub zu jeder Jahreszeit

# Eine runde Sache

OS 10-7

## Camping plus...

Tauchen Sie ein - in die Insel des Wohlfühlens. Jeder findet auf den in Kreisen angelegten Stellflächen sein lauschiges Plätzchen. Eine Vielzahl von komfortablen Platzeinrichtungen erwartet Sie:

moderne Sanitärgebäude mit Babybad, Wickelauflage und behindertengerechtem Sanitärraum • solarbeheiztes Schwimmbad und Kinderplanschbecken • 6 Kinderspielfläche • Jugendraum • Minimarkt und Snackbar • Restaurant mit Biergarten • Tennisplatz • Außentischtennis • Bolzplatz • Entsorgungsstation • Transitplätze • im Winter Langlaufloipe ab Platz

modern

komfortabel

kinderfreundlich



## ...gesunder Urlaub

Nutzen Sie unser Pauschalangebot „Lust auf die etwas andere Kur“ außerhalb der Saison zu einem besonders günstigen Preis.

Außerdem genießen Sie als Gast des Tenda Camping+Freizeitparks in der unmittelbar benachbarten „Klinik+more“ besondere Gesundheitsangebote, wie z. B.

Therapeutische Anwendungen mit Wellness-Charakter mit dem wohltuenden Feilnbacher Moor, eine Wirbelsäulen-Kurkur und viele andere Angebote.

Fordern Sie dazu unsere speziellen Informationen an!

## Urlaub und Gesundheit



zwischen München und Salzburg

Sie erreichen uns über die Autobahn A8 München-Salzburg, (Ausfahrt 100) Bad Aibling / Bad Feilnbach.

Nach der Ausfahrt ca. 2 km Richtung Bad Feilnbach fahren. Kurz vor der Ortseinfahrt von Bad Feilnbach rechter Hand. Der Campingplatz ist beschildert.



Bad Feilnbach

TENDA  
Camping+Freizeitpark GmbH

Reithof 2  
D - 83075 Bad Feilnbach  
Telefon: +49 / (0)8066 / 533  
Fax: +49 / (0)8066 / 8002

e-mail: [info@tenda-camping.de](mailto:info@tenda-camping.de)  
[www.tenda-camping.de](http://www.tenda-camping.de)



... für die ganze Familie





# Willkommen am Chiemsee

0510-8



Willkommen  
Essen & Trinken  
Lageplan  
Freizeit  
Impressionen  
Klick hier!  
Preisliste  
Anmeldung

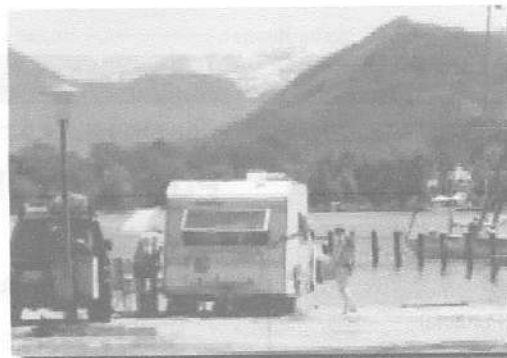


Urlaub auf dem Panorama Camping Harras - das bedeutet:  
Aufenthalt auf einem der schönsten Flecken am Chiemsee - mit Badefreuden direkt vor der "Haustür" und einer traumhaften Sicht auf die Chiemgauer Bergwelt.



Unsere exklusiven Sanitäreanlagen mit extra Familienkabinen, einem Wickelraum mit Babybad, Dusche und WC sowie ein behindertengerechter Sanitärraum mit Dusche, Waschbecken und WC wurden vom Europa Camping + Caravaning Führer ausgezeichnet.

[Details ...](#)



Der auf einer Halbinsel liegende Campingplatz ist auch der ideale Ausgangspunkt für Wanderungen, für Rad und Bergtouren, für einen Besuch des Prunkschlosses auf Herrenchiemsee, für einen Bummel auf der romantischen Fraueninsel sowie für Ausflüge etwa nach München oder nach Salzburg.



Der Urlaub für jeden Geschmack!

Für Individualisten und Gesellschaftstypen, für Badefans und Sonnenanbeter, für Sportler und für Wanderer!



Wie geschaffen für Familien - mit und ohne Kinder!  
Mit Spielmöglichkeiten in Hülle und Fülle





- Einzeleinstellungen
  - Urlaub selbst kombinieren
  - Urlaub wie aus dem Katalog
- Home
Flug
Hotel
Mietwagen
vor Ort
Click&Mix
Last Minute & more
Urlaubsangebote
Karten&Ziele
meinExpedia

Anmelden [Stichwortverzeichnis](#) [Kundenservice & Hilfe](#)

## Portland, OR, USA (PDX) nach München (MUC)

Neue Suche

Suche ändern

Von  
PDX (Portland)

Nach  
MUC (München)

Abflug (TT.MM.JJ)  
29.03.2007  
beliebig

Rückflug (TT.MM.JJ)  
05.07.2007  
beliebig

Fluglinie  
 Weitere Informationen  
Alle

Klasse  
Economy

Nur Direkt/Non-Stop Flüge

Geringe Stornogeühren

Reisende ändern

**1 Erwachsener**

Reisende ändern

↔ - Gibt an, dass der Flug von einer anderen Fluglinie betrieben wird. Für weitere Details bewegen Sie Ihre Maus bitte über dem Symbol.

	 United	 Air Canada	 American Airlines	 bmi	 Lufthansa
<b>Direkt/Non-Stop</b>	---	---	---	---	---
<b>1 Stopp</b>	ab €1622 siehe unten	ab €1622	---	---	ab €1691
<b>2+ Stopps</b>	ab €1183 siehe unten	ab €1183	ab €1183	ab €1200	ab €1242

[Weitere Fluglinien »](#)

**Hinweis:** Die unten gezeigten Preise sind E-Ticket-Preise und gelten **nur für den Flug**. Sie enthalten alle Flugsteuern und Gebühren. Falls Ihr Reiseplan Papiertickets erfordert, wird eine Zusatzgebühr berechnet. Die Ergebnisse umfassen mehrere Flughäfen. Bitte bei der Auswahl beachten.

**Kompletten Hin- und Rückflug auswählen** oder jede Flugstrecke getrennt anzeigen

Zeigt die **50** besten Hin- und Rückflüge aus 150 Ergebnissen [Alle 150 anzeigen](#)

Sortieren nach  Preis  Dauer  Abflugzeit  Ankunftszeit

**€1.153,63** + €30,00 Buchungspauschale (€1.183,63 gesamt)

**13:30** Abflug Portland (PDX) **Do 29.Mär** **United** ↔€8220  
Ankunft München (MUC) **13:35**  +1 Tag Dauer 15Std. 5Min. **Air Canada** ↔€9100 / ↔€9218  
Umsteigen in Vancouver (Intl.), Frankfurt am Main (Frankfurt Intl.)

**10:40** Abflug München (MUC) **Do 5.Jul** **Air Canada** ↔€9211 / ↔€9101  
Ankunft Portland (PDX) **18:33** Dauer 16Std. 53Min. **United** ↔€8225  
Umsteigen in Frankfurt am Main (Frankfurt Intl.), Vancouver (Intl.)

**€1.170,44** + €30,00 Buchungspauschale (€1.200,44 gesamt)

**13:35** Abflug Portland (PDX) **Do 29.Mär** **American Airlines** 564 / 98  
Ankunft München (MUC) **16:00**  +1 Tag Dauer 17Std. 25Min. **bmi** ↔€3275  
Umsteigen in Chicago (ORD), London (LHR)

**11:20** Abflug München (MUC) **Do 5.Jul** **bmi** ↔€3274  
Ankunft Portland (PDX) **21:25** Dauer 19Std. 5Min. **American Airlines** 47 / 1235  
Umsteigen in London (LHR), Chicago (ORD)

0510-10

Search

**From: Innsbruck To: Munich**

**Passengers: 2 adults Date: June 25, 2007**

When a train requires reservations, they are included in the price of the ticket. Prices listed includes all passengers.

If you are taking 2 or more trains, you could save money with a railpass

Unless otherwise requested, all reserved seating is booked in the NON-SMOKING section of the train. Clicking on the headers sorts by that header.

Round-Trip

One-Way

From:

Innsbruck

To:

Munich

Passengers:

Adults 2

Children 0

Youth 0

Seniors 0

Have Railpass?

Departure Date:

25 Jun

Departure Time:

afternoon

Return Date:

9 Jul

Return Time:

afternoon

Search

Departure	Arrival	Travel Time	Train #
12:37PM/25 Jun <b>Innsbruck Hbf</b>	2:25PM/25 Jun <b>Muenchen Hbf</b>	<b>1hr 48min</b> 88	
2:37PM/25 Jun <b>Innsbruck Hbf</b>	4:26PM/25 Jun <b>Muenchen Hbf</b>	<b>1hr 49min</b> 82	
2:38PM/25 Jun <b>Innsbruck Hbf</b>	5:27PM/25 Jun <b>Muenchen Hbf</b>	<b>2hr 49min</b> 5420	
4:37PM/25 Jun <b>Innsbruck Hbf</b>	6:26PM/25 Jun <b>Muenchen Hbf</b>	<b>1hr 49min</b> 84	
4:38PM/25 Jun <b>Innsbruck Hbf</b>	7:27PM/25 Jun <b>Muenchen Hbf</b>	<b>2hr 49min</b> 5424	

Route not available for purchase just yet...

The European Railroads have not yet made a fare available for this route on this travel date.

However, we can email you know as soon as it is available for sale.

Please enter your email address in the space provided below. Rest assured your email address will not be added to any distribution lists, nor sold or shared with any third party company.

Email

Confirm Email

Submit

Later Train

**TERMS AND CONDITIONS:**

The information above is a selection of the best trains between these two cities. The fare given is for a ticket, valid for a single journey. Train schedules and fares are subject to change and availability. Fares and departure times will be confirmed upon purchase confirmation. Sleeper prices vary and will be confirmed at time of purchase.

All orders are subject to a handling fee of \$15 unless otherwise noted. Tickets are subject to a minimum 15% cancellation fee. View the complete [terms and conditions](#).



## Preiswert und zentral übernachten in München

## Pension Westfalia

Mozartstraße 23  
80636 München  
Tel. 089 530377  
Fax 089 5439120  
Email: [pension-westfalia@t-online.de](mailto:pension-westfalia@t-online.de)  
Weitere Info



Wir begrüßen Sie in der Pension Westfalia. Der gemütliche Familienbetrieb befindet sich in einem etwa 110 Jahre alten Herrschaftshaus im Villenviertel direkt an der Theresienwiese. Das Gebäude ist von vielen alten Bäumen umgeben. Vom Frühstücksraum und mehreren Zimmern eröffnet sich Ihnen der Blick über die Theresienwiese auf die Bavaria und die Ruhmeshalle.

Die günstige Familienpension bietet Ihnen Zimmer für 1 bis 4 Personen. Alle Zimmer sind mit dem Aufzug zu erreichen. Die meisten Zimmer sind mit Dusche und WC sowie Telefon und TV ausgestattet. Zum Frühstück bieten wir Ihnen ein umfangreiches Buffet. (diverse Käse und Wurst, Yoghurt, Müsli ...).



Die zentrumsnahe Pension ist mit PKW und öffentlichen Verkehrsmitteln gut erreichbar. Die nächste U- bzw. Bus-Haltestelle ist ca. 2 Gehminuten entfernt. Von dort erreichen Sie mit den öffentlichen Verkehrsmitteln:

- ◆ den Hauptbahnhof in ca. 8 Minuten
- ◆ der Marienplatz in ca. 5 Minuten
- ◆ die Neue Messe München in ca. 20 Minuten

Zimmerpreise in Euro/Nacht inklusive Frühstücksbuffet:

Zimmer	Ausstattung	Preise in EUR
Einzelzimmer	mit DU/Bad, WC mit Etagedusche	50,- bis 55,- 35,- bis 40,-
Doppelzimmer	mit DU/Bad, WC mit Etagedusche	68,- bis 78,- 50,- bis 55,-
3-Bett-Zimmer	mit DU/Bad, WC mit Etagedusche	85,- bis 90,- 69,-
Zusatzbett		15,-

Während dem Oktoberfest und großer Messen erheben wir einen Saisonaufschlag.

Anfahrt:  Unsere Adresse in 

Sie können von 7.00 Uhr bis 21.00 Uhr bei uns anreisen. Ankünfte nach 21.00 Uhr bitten wir mit uns abzustimmen.

Die Zimmer sind in der Regel spätestens ab 12.00 Uhr beziehbar.

Anfrage: bitte füllen Sie mindestens eines der Felder Telefon / Fax / Email aus!

Ihr Name:  Straße  PLZ  Ort

Anfragetext:

Telefon:

Fax:

Email:

**ABSENDEN**

0510-12

**weitere bars in münchen mit kritiken:**

noch mehr bars in münchen mit kritiken gibt's in unserem [ archiv ]



**sys-cos bartipps:**

hier findet ihr die tipps unseres virtuellen kritikers sys-co, der es gern recht schick und trendy mag und auch gerne mal etwas mehr für einen guten cocktail in einer stylischen bar ausgibt.



**bar centrale**  
mitten in der stadt gibt's italien zum anfassen, doch das ist noch nicht alles, denn diese bar bietet noch mehr als den italo-touch:  
[ bar centrale ]



**barfly**  
was mach ich bevor ich ins p1 gehe? früher gab es auf diese frage nur eine gültige antwort: das barfly!  
[ barfly ]



**bar münchen**  
viele trauern dem guten alten schumanns nach, doch die "bar münchen" lässt die legendäre location weiterleben, und das noch schöner als zuvor: [ bar münchen ]



**cafe florian**  
das cafe florian in der hohenzollernstraße ist ein treffpunkt für ganz schwabing und den rest der welt..  
[ cafe florian ]



**cortiina**  
die bar des hotels cortiina in der ledererstraße ist auch für einheimische münchenner eine ganz besondere adresse: [ cortiina ]



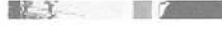
**cream**  
das ehemalige lunis ist zu einer chilligen lounge-bar geworden in der eigentlich alles stimmt: das essen, die drinks, der service und die preise:  
[ cream ]



**eat the rich**  
flowerpower, gute laune und cocktails fast so groß wie eimer. die feste sind stadtbekannt, es ist aber auch sonst sehenswert!  
[ eat the rich ]



**felix**  
schön, dass es in münchen wieder eine bar gibt, die stylisch und hip ist, aber trotzdem auch bodenständiges und uriges zu bieten hat: [ felix ]

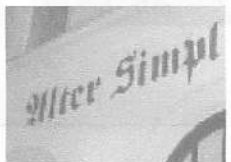


garibaldi bar



**e-berts bartipps:**

hier findet ihr die tipps un virtuellen kritikers e-ber, schicki-micki eher nicht leiden und gerne kultig trinken get gegesatz zu sys-co spielt be auch der bierpreis eine rolle!



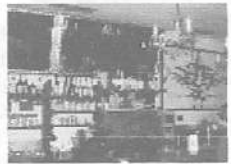
**alter simpl**  
eine der "muß-kneipen" in münchen und proppenvoll interessanten menschen, dass das gefühl für die zeit ve  
[ alter simpl ]



**barschwein**  
'ein bier - ein euro', das is kampfansage, mit der barschwein schnell zum kult den studenten wurde: [ barschv ]



**cafe kubitscheck**  
ein besuch im café kubitsche wie eine zeitreise in die 50er jah  
[ cafe kubitscheck ]



**ciemens gustl (x-club)**  
kreuzberg in schwabing! außer eckkneipe, innen alternativschuppen mit alten sof münchen eine wohltuende selte  
[ x club ]



**favorit bar**  
dieses lokal ist einfach mittlerweile ist es am woche eh so voll, dass wir beri müssen: [ favorit bar ]



**gerner**  
gern wird gerne unterschätzt gerner bietet nette atomsphäre leckere drinks und speisen zu preisen:  
[ gerner ]



**holy home**  
für viele ist diese gemütliche, sz cocktailbar am gärtnerplatz echtes kleines heiligtum. wir euch warum: [ holy home ]



**jennerwein**  
die schwabinger kneipe bietet Mischung aus kitsch, biersch kneipe und wohnzir  
[ jennerwei ]



kaffee giesing





December 3, 2006



LEARN GERMAN!

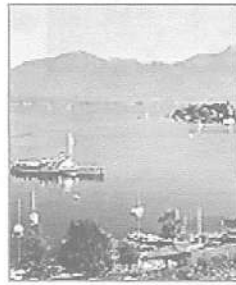


German courses in Vienna: "Top quality at the best price!"

## ABOUT GERMANY REGIONS

Bavaria  
Germany's East  
'Ruhrpott' (Ruhr Valley)

Black Forest  
Rhine Valley  
North and Baltic Sea



Tegernsee, Bavaria

### Bavaria

**Bavaria** prides itself on its uniqueness and is effectively if not officially a state within a state. **Bavaria** features a variety of beautiful lakes, forests and the towering summits of the Alps. The highest mountain in **Germany**, the 'Zugspitze', is located in **Bavaria** at the border with **Austria**. The 'Chiemsee', 'Starnberger See' and 'Tegernsee' are just some of the exquisite lakes which invite visitors to take a rest in **Bavaria**. The region is perfect for swimming, hiking, cycling or any other outdoor activities.

**Upper Bavaria** has its own highlights, which include beautiful castles and gorgeous monasteries. One of the most spectacular sights in **Germany** is the Neuschwanstein Castle, which epitomises the fairytale landscape of **Bavaria**. This stunning castle sits perched high atop a mountain range. It was built by Ludwig II, whose marriage was the starting point of the world famous **Bavarian** tradition: **Munich's 'Oktoberfest'**.

Beer is not merely considered to be a beverage in **Bavaria**, it is their cultural heritage. The population of **Bavaria** is proud of its beer. There are various local breweries, many of them with an excellent reputation i.e.the 'Paulaner' and 'Augustiner' breweries. Bavarian beer (brewed according to the purity regulations of 1516) is world-famous; the hops used in its production are grown in **Bavaria** itself.

Bavarians are characterized as either loud and brash or as humorous, warm and fun-loving depending on who you meet. They are often seen in traditional leather short trousers ('**Lederhosen**') or embroidered dresses ('**Dirndl**'), and are primarily Catholic and conservative.

In eastern **Bavaria**, glassworks and porcelain manufacturers carry on traditional crafts.

### Bavarian castles

Pictures of castles and more German Art for downloading

Ads by Goooooogle



- FAST FACTS
- REGIONS
- TOWNS & CITIES
- CULTURE
- LEARN GERMAN
- LIVING IN GERMANY
- BEST ADDRESSES
- MORE INFORMATION
  - About Austria - Travel Guide
  - About Vienna - Travel Guide
- PARTNERLINKS

### Ads by Google

- Bavaria Castle
- Germany Travel
- Hotels Germany
- Tours Germany

PARTNER-SITES

Ads by Google

**Castle Germany**  
Find Useful Information & Articles For Planning Your Next Vacation  
www.BudgetTravelOnline

**Germany Photo Gallery**  
Free Photos, screensavers & more! Browse our Free Galleries.  
Away.com

**German castle posters, calendars, photobooks, key chains. Unique bavarian gifts for sale.**  
www.almosteurope.com

**Hotels Upper Bavaria**  
All hotels shown on a region map. Book online now, pay at the hotel!  
www.booking.com

Advertise on this site

# Neverending Forest Wilderness



Photo by R. F. F. F.

▼ The lynx had been evading in the Bavarian Forest for 150 years. Since the fall of the border barriers it has been wandering back to the region from the

Czech Republic. With its powerful back legs and a comparatively short body, it is a short distance hunter, who surprises its prey with an amazing velocity.

## Bavarian Forest National Park

The oldest German national park winds around the Bavarian forest peaks: Falkenstein, Rachel and Lusen along the border with the Czech Republic – the Bavarian Forest National Park. Together with the neighbouring Sumava National Park in the Czech Republic, the parks form the largest forest protected area in central Europe. Nowhere else between the Atlantic Ocean and the Ural mountain is nature allowed to develop into a unique wild forest according to its own ancient laws over such a large area.

A network of 300 kilometres of well marked hiking trails, 200 kilometres of cycling trails and 80 kilometres of cross-country trails make the park area accessible to visitors in summer and winter. The panoramic view from the mountain peaks shows the wide forest of the Bavarian-Bohemian border mountains. The visitor

can enjoy high elevation moors and water meadows, the legend surrounded Lake Rachel and refreshing mountain streams. One will meet the valley spruce forests, the mixed mountain forest with spruce, pine and beech and, at a height of 1,200 metres above sea level, the mountain spruce forest. They are home to rare species such as the eagle owl, the three-toed woodpecker and the white-backed woodpecker or Europe's smallest owl, the pygmy owl. Even the lynx and the black stork have returned and the Bohemian gentian blooms on the pastures, the "Schachten", in the Bayerische Wald.

The hiker will however find more in the national park than wild forest. Due to hot and dry summers in the mid 90s and little snow in the winter, the 3-5 millimetre small bark-beetle has moved in and killed large areas of old spruce forest. To the observer's amazement, a new species-rich forest is growing up on the decaying wood which lies on the forest floor.

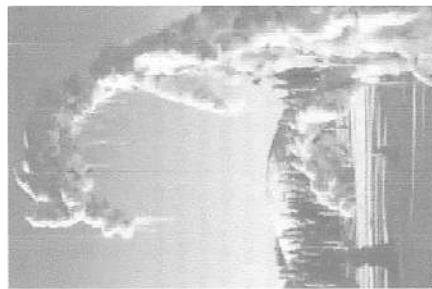


Photo by R. F. F.

## A Day in the National Park

If you are coming to the park for the first time, begin at the Information Centre in Neuschönau. The Hans-Eisenmann-Haus, with free admission, offers individual consultation, a forest theme 3-dimensional exhibition, slide shows and films, a library with a section for young "book worms" and a children's discovery room.

The neighbouring plant and stone garden exhibits the entire plant world of the Bavarian Forest (700 species). You can walk a 7 km long trail loop through the animal enclosure near the information centre where you can observe the mountain forest animals, including brown bear, wolf and lynx, characteristic of the region.

Whoever still has time and interest can then ride the Igelbus (national park bus) to the "Seelensteig", a contemplative walk that will relax your soul.



Photo by R. F. F.

## A Week in the National Park

**Monday:** Hans-Eisenmann-Haus, plant and stone garden, then a loop (7 km) through the animal enclosure.

**Tuesday:** Hike in the border region in the east of the park, where you will see some living history of the forest. Extra trip to the source of the Moldavia river is a particularly memorable experience.

**Wednesday:** Hike up the Lusen. You can take the "Hochwaldsteig" path and the Jacob's ladder to the peak (1,373 m), which is free of trees, is a sea of rock.

**Thursday:** After yesterday's hard work, head over to visit the forest wilderness discovery path "Watzlikhain" near Zwieselwäldchen.

**Friday:** Starting at the Rachelshutten, climb up the national park's highest peak, the "Große Rachel" (1,453 m). Stop for a snack at the Waldschmidthaus.

**Saturday:** Today it's the children's turn. Spend the day learning about nature hands-on at the "Waldspiegelallee" (forest playground) with its unique nature discovery path.

▼ An attraction for the whole family – the Hans-Eisenmann-Haus information Centre, with animal enclosure and plant and stone garden

▼ Winter landscape on the Lusen

▼ View of the hill tops along the border area of the Bavarian Forest

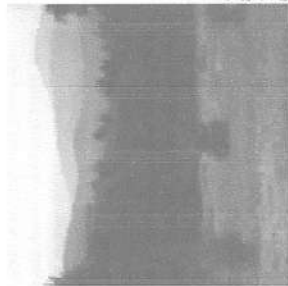


Photo by R. F. F.



**Bavarian Forest National Park**

## Dates and Facts

**Location:** Between Bayerisch Eisenstein and Mauth at the Czech border.

**Area:** 245 square kilometres

**Elevation:** 600 to 1,453 metres (Großer Rachel)

**Established:** 1970

**Types of Landscape:** Valley spruce forest, mixed mountain forest, mountain spruce forest

## Books and Maps

**Brochure:** "Leaving nature to its own devices", includes map

Wanderkarte Bayerischer Wald

"Zwischen Rachel und Lusen"

(hiking path in the Bavarian Forest)

Between the Rachel and Lusen Parks)

ISNEN 3-86116-059-5

## National Park Information

**Bavarian Forest National Park**

**Administration**

Frejungfer Str. 2, D-94481 Grafenau

Tel. +49(0)85 52 95 00-0,

Fax +49(0)85 52 13 94

poststelle@fornp-bayern.de

www.nationalpark-bayerischer-wald.de

Hans-Eisenmann-Haus Information Centre

Tel. +49(0)85 58 96 15-0,

Fax +49(0)85 58 26 18

## Accommodation

**Association of National Park Communities**

Tel. +49(0) 85 58/9 10 21

Tel. +49(0)85 52 25 21

**Wolfsberger Land Tourism Association**

Tel. +49(0)85 51 571 21

**Travel to the Park**

**By Train:** From Plattling (ICE from Munich, Vienna, Nürnberg) with the "Waldbahn" (forest train) to Zwiesel, Bayerischer Eisenstein, Grafenau, Frauenau or Spiegelau. On from there by bus with the

"Bayerwald-Ticket"

**By car:** Falkenstein-Rachel area: A 92 from Munich and A3 from Regensburg or Passau. Exit Deggendorf, then along the B 11 to

Regen, Zwiesel and Bayerischer Eisenstein. For the Rachel-Lusen area: A 3, exit at Hengensberg and along the B 633 to Grafenau and on to Neuschönau or Spiegelau.

050-14

OSLO-15

# Experiencing Nature



Photo by NP Barch/Bangskul



Photo by NP Hart: Vaidler/Sas/Röder

From the Wadden Sea to the Baltic Sea coast, from the northern German lowlands and the central mountain ranges to the Alps, every national park is worth discovering. They are best visited on foot, by bicycle, or even by boat. There are many opportunities awaiting you to discover the national parks with all your senses.

## The 365-Day Programme

National parks are never closed. It is possible to enjoy the "festival of nature" in every season. The colourful autumn with the sky as a canvas for the spectacular flight of birds in migration; the snow-cold covered forests in winter; the emerging stream of colour in the spring; and the saturated green of summer, with the warm breeze and voices of the animals are ever present for the visitor to enjoy.

## Visitors are welcome

Visit the parks. Stand back as a quiet observer and admirer. Nature is something extraordinary - in the national parks you can experience this first hand. Escape from hectic everyday life and let your soul be free.

## Variety and Unique Opportunities

One thing you have to bring with you is time. There to gain distance from everyday life and time to travel to the places which will reveal the magnificence of nature.

▲ [www.europarc.de/gerland/en](http://www.europarc.de/gerland/en)  
 Put your trip from here -  
 Use the internet

Germany's National Parks

The national park administrations as well as other groups in the region offer guests a large selection of diverse and age appropriate activities: nature trails for the outdoor enthusiasts, adventure playgrounds for children and seasonal festivals for the whole family. The visitor centres present a variety of interesting information about the national parks and their regions. On request, a qualified enthusiastic staff member is ready to help you, for example on an excursion, observation of wild animals or organizing adventure tours. Apart from these possibilities you can choose other highlights of the region to explore, such as outdoor museums, stores with regional products or cultural events. Find out more from the park administrations or the tourist offices.

## Your arrival made easy

The best way to get to the parks is by train, so that you can begin to relax and prepare yourself mentally for the national park. Should you come by car, we recommend you take advantage of the park-and-ride locations. From there you can switch to public transportation. All the parks are making a great effort to encourage the use of train, bus and boat services already offered in the region so that your enjoyment begins with your arrival. Have we aroused your interest in Nature? Then come to Germany - and begin with a visit to a national park!



Wadden Sea National Park  
 U. Lauer/Agency



Photo by NP Rign



Photo by NP Lower Oder Valley



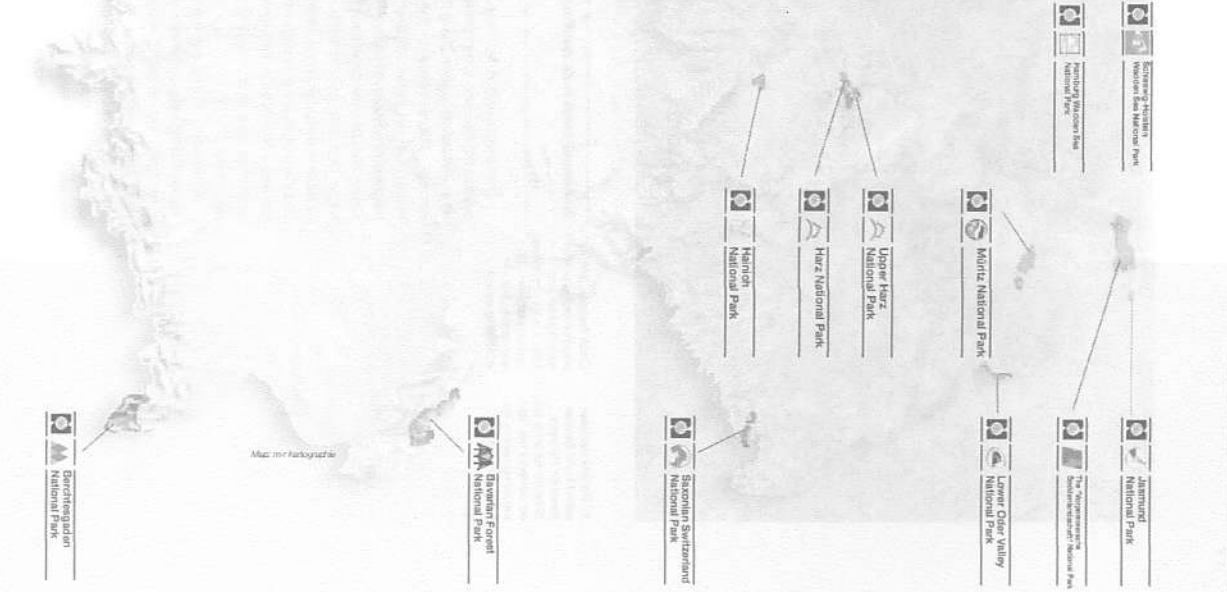
Photo by JCB, Berlin



Photo by NP Saxonian Switzerland

► A part of the visitor infrastructure is shown here. Ask the park of your choice for more details before you travel!

## Germany's National Parks



Protecting the Natural Heritage