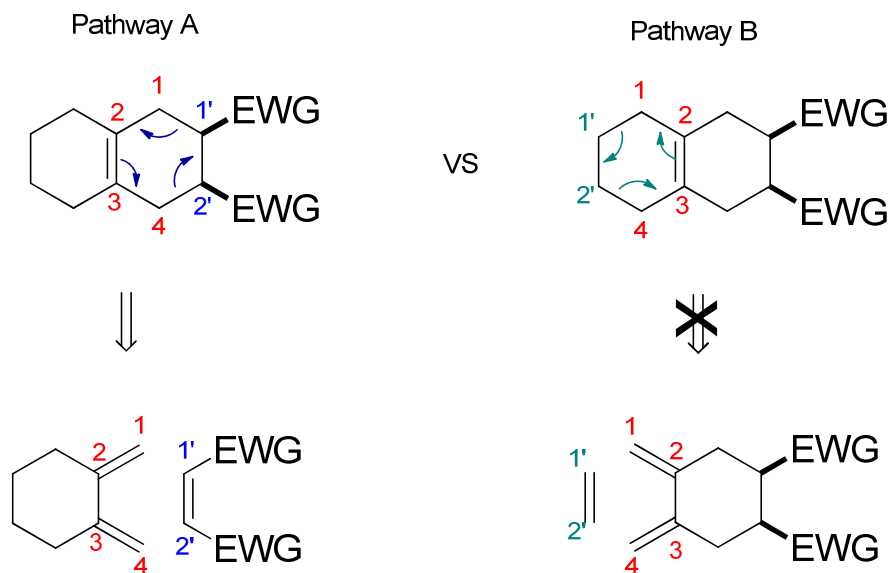


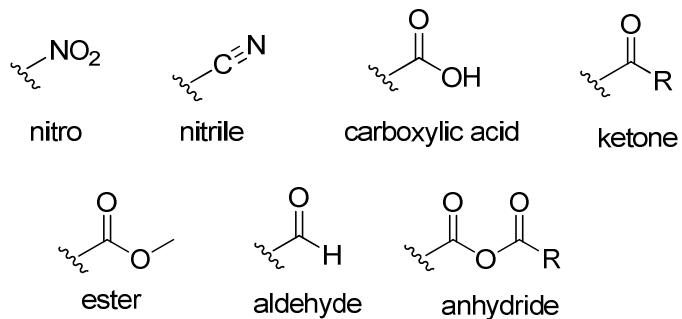
## Retro Diels-Alder worksheet

A common question for retro DA reactions is shown below. If you can push a retro DA two different ways (pathway A or pathway B) which one is the better retro DA?



To answer this question you have to think in a forward sense. Remember, a Diels-Alder reaction requires less energy in the transition state when the dienophile contains an electron withdrawing group (EWG). The better retro DA is when the dienophile bears the EWG.

Common EWG



Here are a few more practice problems on the retro Diels-Alder (DA) reactions.

