

Robert M.

# La Follette School of Public Affairs

---

at the University of Wisconsin-Madison

## Working Paper Series

La Follette School Working Paper No. 2005-007

<http://www.lafollette.wisc.edu/publications/workingpapers>

## What Matters for Financial Development? Capital Controls, Institutions, and Interactions

### Menzie Chinn

Professor, La Follette School of Public Affairs and Department of Economics  
at the University of Wisconsin-Madison

[mchinn@lafollette.wisc.edu](mailto:mchinn@lafollette.wisc.edu)

### Hiro Ito

Department of Economics, Portland State University

[ito@pdx.edu](mailto:ito@pdx.edu)



Robert M. La Follette School of Public Affairs  
1225 Observatory Drive, Madison, Wisconsin 53706

Phone: 608.262.3581 / Fax: 608.265-3233

[info@lafollette.wisc.edu](mailto:info@lafollette.wisc.edu) / <http://www.lafollette.wisc.edu>

The La Follette School takes no stand on policy issues;  
opinions expressed within these papers reflect the  
views of individual researchers and authors.

# **What Matters for Financial Development? Capital Controls, Institutions, and Interactions**

by

Menzie D. Chinn\*  
University of Wisconsin, Madison, and NBER

and

Hiro Ito\*\*  
Portland State University

January 31, 2005

**Acknowledgements:** Helpful comments were received from the co-editor Carlos Vegh, an anonymous referee, Joshua Aizenman, Michael Hutchison, Carl Walsh, Frank Warnock, Tom Willett, participants at the Kennedy School Luncheon on International Economic Policy, the UCSC brown bag, and the USC development seminar. We also thank Ashok Mody and Dennis Quinn for providing data. Financial support of faculty research funds of UC Santa Cruz are gratefully acknowledged.

\* Menzie D. Chinn, Department of Economics, University of Wisconsin, 1180 Observatory Drive, Madison, WI 53706-1393, Tel/Fax: (608) 262-7397/2033, E-mail: [mchinn@lafollette.wisc.edu](mailto:mchinn@lafollette.wisc.edu).

\*\* Hiro Ito, Department of Economics, Cramer Hall 241, 1721 SW Broadway, Portland State University, Portland, OR 97201. Email: [ito@pdx.edu](mailto:ito@pdx.edu).

# **What Matters for Financial Development? Capital Controls, Institutions and Interactions**

## **Abstract**

We extend our work (Chinn and Ito, 2002) focusing on the links between capital account liberalization, legal and institutional development, and financial development, especially that in equity markets. In a panel data analysis encompassing 108 countries and twenty years ranging from 1980 to 2000, we explore several dimensions of the financial sector. First, we test whether financial openness can lead to equity market development when we control for the level of legal and institutional development. Then, we examine whether the opening of the goods sector is a precondition for financial opening. Finally, we investigate whether a well-developed banking sector is a precondition for financial liberalization to lead to equity market development and also whether bank and equity market development complements or substitutes. Our empirical results suggest that a higher level of financial openness contributes to the development of equity markets only if a threshold level of general legal systems and institutions is attained, which is more prevalent among emerging market countries. Among emerging market countries, a higher level of bureaucratic quality and law and order, as well as the lower levels of corruption, increases the effect of financial opening in fostering the development of equity markets. We also find that the finance-related legal/institutional variables do not enhance the effect of capital account opening as strongly as the general legal/institutional variables. In examining the issue of the sequencing, we find that the liberalization in cross-border goods transactions is found to be a precondition for capital account liberalization. Our findings also indicate that the development in the banking sector is a precondition for equity market development, and that the developments in these two types of financial markets have synergistic effects.

**JEL Classification:** F36, F43, G28

**Keywords:** financial development, capital controls, financial liberalization, legal institutions, sequence of liberalization

## 1. Introduction

Recent years have witnessed a surge of interest in issues surrounding globalization, including financial globalization. A series of financial crises in the 1990s rekindled the debates on the effects of removing capital controls, which led many observers to reconsider gains and pains of financial liberalization (Kaminsky and Schmukler, 2001a,b, 2002; Schmukler, 2003).<sup>1</sup>

Many studies have argued capital account liberalization can affect economic development through financial development; liberalized financial markets may contribute to developing financial markets that provide funds to borrowers who may have productive investment opportunities.<sup>2</sup> Theory suggests that capital account liberalization can lead to development of financial systems through several channels. First, financial liberalization may mitigate financial repression in protected financial markets, allowing the (real) interest rate to rise to its competitive market equilibrium (McKinnon, 1973; Shaw, 1973). Second, removing capital controls allows domestic and foreign investors to engage in more portfolio diversification. These two points can be summarized as that financial liberalization may reduce the cost of capital and increasing its availability for the borrowers. Stulz (1999) shows that financial globalization reduces the cost of equity capital because of the reduction in the expected returns to compensate risk as well as in agency costs (also, Henry, 2000; Bekaert et al., 2000, 2001). Third, not least, the liberalization process usually increases the efficiency level of the financial system by weeding out inefficient financial institutions and creating greater pressure for a reform of the financial infrastructure (Claesens et al., 2001; Stulz, 1999; Stiglitz 2000). Such an improvement in financial infrastructure may alleviate information asymmetry, decreasing adverse selection and moral hazard, and further raising the availability of credit.

The link between financial liberalization and financial development is not unequivocal, however. It is often argued that to benefit from more open cross-border financial transactions, financial systems need to be equipped with reasonable legal and institutional infrastructure.

---

<sup>1</sup> In this study we do not discuss the merits of capital controls in the context of financial crises. For a review, see Aizenman (2002). Kletzer and Mody (2000) survey the debate in the context of “self-protection policies” for emerging markets. Ito (2004) investigates the correlation between financial liberalization and the output performance of crisis-hit economies.

<sup>2</sup> See for instance Leahy, *et al.* (2001) for OECD-specific results. Klein and Olivei (2001) document the linkage between financial development and economic growth for developed countries, and its absence for less developed countries. Spiegel (2001) examines an APEC sample, while Arteta, Eichengreen and Wyplosz (2001) document the fragility of many of these group-specific results. IMF (2001, Chapter 4) surveys both the growth and finance, and finance and liberalization literatures. For the most recent review on finance and growth, refer to Quinn, *et al.* (2002)

In economies where the legal system does not clearly define property rights or guarantee the enforcement of contracts, the incentives for loan activities can be limited. Legal protections for creditors and the level of credibility and transparency of accounting rules are also likely to affect economic agents' financial decisions.<sup>3</sup> Levine, Loayza, and Beck (2000) investigate whether the level of legal and regulatory determinants of financial development influences the development financial intermediary sector. La Porta, Lopez-de-Silanes, Shleifer, and Vishny (hereafter LLSV, 1997, 1998) argue that the national legal origin (whether English, French, German, or Scandinavian) strongly affects the legal and regulatory environment in financial transactions and explains cross-country differences in financial development. LLSV (1997, 1998) and Levine (1998, 2003) show that low levels of shareholder rights are associated with poorly developed equity markets (especially in French civil law countries). In contrast, Common law countries have high levels of shareholder rights with correspondingly high levels of equity market development (Claessens, et al., 2002 and Caprio, et al., 2003), and that greater creditor rights are positively associated with financial intermediary development.<sup>4</sup>

Clearly, the link between financial liberalization and financial development is of great importance to emerging market policymakers, and naturally, one needs to examine the effect of liberalizing cross-border financial transactions in the context the institutional setting. However, very little investigation has been made to shed light on the link in such a context. This is the topic of our study.

In this article, we extend our work (Chinn and Ito, 2002) focusing on the links between capital account liberalization, legal and institutional development, and financial development. Since our study is motivated by the development of equity markets through financial liberalization and its contribution to economic development among emerging market countries in the 1990s, our focus is on the effect of capital account liberalization on the development of equity markets among less developed and emerging market countries. We conduct a panel data analysis encompassing 108 countries (including 21 industrialized countries and 31 emerging market countries) and twenty years ranging from 1980 to 2000. In addition to searching for the effects of each set of factors, we

---

<sup>3</sup> For the analysis of legal development on financial development, see Beck and Levine (2003), Claessens, et al. (2002), Caprio, et al. (2003), Johnson, et al. (2000), and Rajan Zingales (1998). For a general discussion on the importance of legal and institutional foundations for financial development, see Beim and Calomiris (2001) and Stultz (1999).

<sup>4</sup> Rajan and Zingales (2003), on the other hand, question the link between legal origins and cross-country difference in financial development, and instead stress the important role of political forces in shaping policies toward financial markets and their development.

examine the oft-discussed issue of the sequence of liberalization. It has been often argued that countries need to liberalize their goods market prior to liberalizing financial sector (McKinnon, 1991). Also, in order for financial systems to reap the benefit of financial liberalization, the systems themselves need to be developed up to a certain level, suggesting the importance of a sequence of liberalization within the financial sector (Martell and Stulz, 2003). To test these claims, we examine whether the opening of the goods sector is a precondition for financial opening, and furthermore, investigate whether a well-developed banking sector is a precondition for financial liberalization to lead to equity market development. Additionally, we explore whether bank and equity market development complements or substitutes.

Our empirical results suggest that a higher level of legal and institutional development contributes both directly and in an interactive manner with financial openness to the development of equity markets, but only if a country is equipped with a reasonable level of legal and institutional development, which is more prevalent among emerging market countries than developing countries. A higher level of bureaucratic quality and law and order, as well as the lower levels of corruption, may enhance the effect of financial opening in fostering the development of equity markets. We also find that, among emerging market countries, the overall level of finance-related legal/institutional development increases stock market trading volumes and enhances the effect of financial openness. However, the finance-related legal/institutional variables do not exhibit as strong an effect as the general legal/institutional variables. In examining the issue of the sequencing, we find that the liberalization in cross-border goods transactions is found to be a precondition for capital account liberalization, in a result similar to that obtained by Aizenman and Noy (2004). Our findings also indicate that the development in the banking sector is a precondition for equity market development, and that the developments in these two types of financial markets have interactive effects.

## **2. An Econometric Analysis of Openness, Institutions and Financial Development**

The link between capital account openness, financial development, and legal/institutional environment has been investigated by Chinn and Ito (2002). In this study, we demonstrated that financial systems with a higher degree of legal/institutional development on average benefit more from financial liberalization than those with a lower one. Furthermore, the positive effect of

legal/institutional development seems to flow primarily from the degree of shareholder protection and accounting standards. In what follows, we extend our previous study by employing updated data and also exploring more questions related to the link between capital account openness and financial development. More specifically, we will investigate the issues relevant to the sequence of liberalization between financial and goods cross-border flows and the sequence of development in banking and equity markets.

## 2.1 The Empirical Specification

First, we reexamine the long-term effect of capital account openness on financial development in a model that controls for the level of legal and institutional development. The model is specified as:

$$(1) FD_t^i - FD_{t-5}^i = \gamma_0 + \rho FD_{t-5}^i + \gamma_1 KAOPEN_{t-5}^i + \gamma_2 L^i + \gamma_3 (L^i \times KAOPEN_{t-5}^i) + X_{t-5}^i \Gamma + u_t^i,$$

where  $FD$  is a measure of financial development;  $KAOPEN$  is a measure of financial openness;  $X$  is a vector of economic control variables; and  $L^i$  refers to a measure of legal or institutional development.

For the capital openness variable, we use the Chinn-Ito index which is described in greater detail in a later section and the data appendix. The vector  $X$  contains macroeconomic control variables that include log per capita income in PPP terms, the inflation rate, and trade openness, measured as the ratio of the sum of exports and imports to GDP. In this analysis, the set is kept fairly small so as to retain some interpretability of the correlations. Log per capita income is included as there is a long literature ascribing financial deepening, aside from the role of regulation, to the increasing complexity of economic structures associated with rising income. The inflation rate is included because it may distort decision-making.<sup>5</sup> In particular, moderate to high inflation may discourage financial intermediation, and encourage saving in real assets. Finally, trade openness is included as an ad hoc control; many empirical studies find a correlation of trade openness with any number of economic variables. The relationship between trade openness and financial openness will be investigated more thoroughly in a later section.

---

<sup>5</sup> Since in most cases, the volatility of inflation rises with the inflation rate, the inflation rate could be proxying for either or both of these effects.

A series of regressions is conducted for each of the financial development variables (*FD*), which include private credit creation (*PCGDP*), stock market capitalization (*SMKC*), stock market total value (*SMTV*), all measured as a ratio of GDP, and stock market turnover (*SMTO*). Also for the series of regressions with different financial development measures, we also include each of the nine legal/institutional variables and its interactive term with the capital account openness index. The nine legal/institutional variables include those which are pertaining to the general development of legal systems or institutions as well as those pertaining particularly to financial transactions. Further discussions about the legal/institutional variables are presented in the data section.

In order to avoid problems of endogeneity associated with short term cyclical effects, we specify our model as a growth rate on levels regression, akin to a panel error-correction model with non-overlapping data. That is, we only sample data every five years between 1980 and 2000, and use the five-year average growth of the level of financial development as the dependent variable and the “initial conditions” for time-variant explanatory variables, including the initial level of the financial development indicator, for each five-year panel.<sup>6</sup>

## 2.2 The Data

The data are drawn from a number of sources, primarily the World Bank’s *World Development Indicators*, the IMF’s *International Financial Statistics*, and the databases associated with Beck, Kunt, and Levine (2000). The analysis is based upon data originally recorded at an annual frequency, over the 1970-2000 period, covering 108 countries. Details are reported in Appendix 1.

### 2.2.1 Financial Development Measures

The measures of financial development are extracted from the dataset of Beck, Kunt, and Levine (2000). *PCGDP*, the ratio of private credit from deposit money banks to the private sector, represents the overall development in private banking markets.<sup>7</sup> While this variable is examined for purposes of comparison, our focus is primarily on the development of equity markets development, for which we use three variables as the measures: *SMKC* (stock market capitalization), *SMTV* (total value of stocks traded), and *SMTO* (stock market turn over ratio). We

---

<sup>6</sup> Time fixed effects are also included in the model to control for possible time-specific exogenous shocks.

<sup>7</sup> While many researchers use M2 or liquidity liabilities (*M2Y* and *LLY* in our data set), we only report results for *PCGDP* as our focus is on equity market development, and also because the correlation between *M2Y* or *LLY* and



can consider *SMKC* as the measure of the size of equity markets and *SMTV* and *SMTO* as the measure of the activeness of equity markets.

Regarding the measurement issues surrounding financial development, we must make two more notes. First, in this study, we do not look into offshore markets as part of financial development, and therefore, focus merely on the development of domestic equity markets. Although we have witnessed through the Asian financial crisis that some emerging market countries such as Korea and Thailand tried to complement their domestic markets by developing offshore markets and allowing foreign investors, mostly hedge funds, to actively engage, there have not developed so much literature regarding these issues, mainly owing to the recentness of the development of hedge funds and offshore markets.<sup>8</sup> Furthermore, the relationship between onshore and offshore funds has not been rigorously investigated (except for Kim and Wei, 2002) due to data unavailability.<sup>9</sup> Hence, we do not attempt to link offshore funds to domestic equity markets.

Secondly, our analysis does not consider the effect of capital account liberalization on the overseas listings by international firms. Several authors have discussed the process of emerging market companies “migrating” to mature markets by listing their shares and trading in New York or other major stock markets. The implications of this process is under debate. Claessens et al. (2002) and Levine and Schmukler (2003) provide evidence that migration of trading from domestic to international markets allows firms to reap from international portfolio diversification gains, while contributing to the shrinkage of local markets. On the other hand, Karolyi (2003) shows that cross-listings in the form of American Depositary Receipts (ADRs) neither facilitate nor hinder local market development, but that it “may be an outcome of the declining market conditions and not a cause of them.”<sup>10</sup> Given the ambiguity of the effects, and data limitations, we focus on the development of domestic equity markets.

---

*PCGDP* is quite high (84.9% and 81.9%, respectively),.

<sup>8</sup> The exceptions include Fung and Hsieh (2001), their other works, Brown and Goetzmann (2001), and Brown et al. (1998).

<sup>9</sup> Kim and Wei study the behavior of the Korean offshore market, and find that the Korean offshore funds trade more aggressively than onshore markets; but they do not engage in positive feedback trading unlike their onshore counterparts; and that they do herd, but not so much as the onshore funds in the U.S. or U.K. which tends to herd more during a crisis.

<sup>10</sup> Sarkissian and Schill (2002) show that internationalization of trading is constrained by geographical and institutional/cultural familiarity, making the gains from international portfolio diversification small. Their analysis shows that overseas listings are not conducted to “overcome investor home bias,” but “reflect the bias.”

Table 1 reports the growth rates of financial development measured in the variables used in this study. Inspection of the table reveals that during the 1990s, all subsample groups experienced the most rapid development in equity markets, measured along several dimensions, including size (*SMKC*) and transactions activity (*SMTV* and *SMTO*). This is true despite the retrenchment in the equity markets of less developed and emerging market countries during the second half of the decade. Hence, the development of equity markets has progressed – albeit in a halting fashion – for the last three decades.

### **2.2.2 Capital Openness Index – the Chinn-Ito Index**

It is well known that it is extremely difficult to measure the extent of openness in capital account transactions (e.g., Eichengreen, 2002; Edison et al., 2002). Although many measures exist to describe the extent and intensity of capital account controls, the consensus is that such measures fail to fully capture the complexity of real-world capital controls for a number of reasons.<sup>11</sup> First, conventional measures of quantifying capital controls (or financial openness) sometimes fail to account for the intensity of capital controls. The most prominent example of such measures include binary variables based upon the IMF’s categorical enumeration reported in *Annual Report on Exchange Arrangements and Exchange Restrictions (AREAER)*.<sup>12</sup> Second, IMF-based variables are too aggregated to depict the intricacy of actual capital controls. Capital controls can differ depending on the direction of capital flows (i.e., inflows or outflows) as well as the type of financial transactions targeted.<sup>13</sup> Thirdly, it is almost impossible to distinguish between *de jure* and *de facto* controls on capital transactions. Capital control policies are often implemented without explicit policy goals to control the volume and/or type of capital flows. Conversely, as Edwards (1999) discusses, it is often the case that the private sector circumvents capital account restrictions, nullifying the expected effect of regulatory capital controls. Therefore, researchers

---

<sup>11</sup> See Edison and Warnock (2001), Edwards (2001), and Edison et al. (2002) for discussions and comparisons of various measures on capital restrictions. Dooley (1996) provides an extensive literature review and Neely (1999) presents a descriptive overview of capital controls.

<sup>12</sup> There are binary variables created based on a set of “on-off” clarification, which includes an indicator variable for the existence of multiple exchange rates ( $k_1$ ); restrictions on current account ( $k_2$ ); capital account transactions ( $k_3$ ); and a variable indicating the requirement of the surrender of export proceeds ( $k_4$ ).  $k_3$  is the one often used for capital controls.

<sup>13</sup> Johnson and Tamirisa (1998) investigated the empirical determinants of capital controls and used the recently created disaggregate components of capital controls publicized in the *AREAER*. However, the time series of the variables are not sufficiently long; it only covers years after 1996. Most recently, Miniane (2004) constructed a set of indices to measure the intensity of capital controls, based on 13 disaggregated components of capital controls in the *AREAER*, essentially in the same way as Johnson et al., but extending the data back to 1983 for 34 countries.

often refer to financial integration among countries and interpret it as *de facto* restrictions on capital transactions (See De Gregorio (1998) and Rajan (2003)).

In this study, we rely upon the capital account openness index, *KAOPEN* developed by Chinn and Ito (2002). This index is the first principle component of the four IMF binary variables discussed above. One of the merits of the *KAOPEN* index is that it attempts to measure the intensity of capital controls, insofar as the intensity is correlated with the existence of other restrictions on international transactions. By the nature of its construction, one may argue that the *KAOPEN* index measures the *extensity* of capital controls because it may not directly refer to the stringency of restrictions on cross-border transactions, but to the existence of different types of restrictions. However, measuring the extensity of capital controls may be a good proxy to the measure of intensity of capital controls.<sup>14</sup> This point can be made more concrete by considering a country with an open capital account. It may still restrict the flow of capital by limiting transactions on the current account restrictions or other systems such as multiple exchange rates and requirements to surrender export proceeds. Alternatively, countries that already have closed capital accounts might try to increase the stringency of those controls by imposing other types of restrictions (such as restrictions on current account and requirements for surrender of trade proceeds) so that the private sector cannot circumvent the capital account restrictions. Another merit of this index is its wide coverage (more than 100 countries) for a long time period (1970 through 2000).<sup>15</sup> Appendix 2 explains how *KAOPEN* is constructed.

Table 2 presents the averages of *KAOPEN* and IMF binary variables for the full sample period of 1970 – 2000 and each decade. Not surprisingly, the group of industrialized countries have maintained a high level of capital account openness over the full sample period while emerging market countries seem to have slightly more open capital accounts than less developed countries.<sup>16</sup> Interestingly, both industrialized and emerging market countries achieved much more

---

<sup>14</sup> One might think of the Quinn (1997) index as the measure of the intensity of capital controls. The Quinn index is a composite measure of financial regulation that ranges from 0 to 14, with 14 representing the least regulated and most open regime. The bulk of the index is based upon Quinn's coding of the qualitative information contained in the *AREAER* pertaining to  $k_2$  and  $k_3$ , augmented by information regarding whether the country in question has entered into international agreements with international organizations such as the OECD and EU. A complete tabulation for the OECD members exists, but the coverage for the less developed countries is much less extensive. The correlation between the Quinn index and the Chinn-Ito index is found to be 83.7%, suggesting that *KAOPEN* is proxying the intensity of capital controls. The correlation between the aforementioned index by Miniane (2004), which is based on more disaggregated *AREAER* information on capital controls, and the Chinn-Ito index is found to be 78.6%.

<sup>15</sup> The Quinn index is available for the OECD members between 1958 and 1997, but the coverage for the less developed countries is limited to certain years (1958, 1973, 1982, 1988, and 1997).

<sup>16</sup> The cross-sectional average of *KAOPEN* for the full sample period is zero by construction.

rapid financial liberalization between the 1980s and 1990s than less developed countries, especially making the difference between emerging market and less developed countries in capital account openness become quite large by the second half of the 1990s.<sup>17</sup>

### **2.2.3 Measures of Legal/Institutional Development**

The legal/institutional variables can be categorized into two groups. The first group contains the measures related to the general development of legal systems and institutions, namely *LEGAL1*, *Corrupt*, *LAO*, and *BQ*. *LEGAL1* is the first principal component of the other three variables, and we treat this variable as a representative measure of the general level of legal/institutional development.<sup>18</sup> *Corrupt*, *LAO*, and *BQ* measure the level of corruption, law and order, and the quality of the bureaucratic system, respectively. All of these data series included in *LEGAL1* are obtained from the ICRG database. In these indexes, higher values indicate better conditions. The data series are available for the period of 1984 through 1997, but are included as the period-average in order to maintain comparability with the *LEGAL2* variables. The summary statistics for the *LEGAL1* variables are reported in Table 3. In the table, we can observe that the wide gap in the level of legal and institutional development between industrialized and less developed countries, and also that emerging market countries have achieved a higher level of legal development within the group of less developed countries.

The second group of legal variables – *CREDITOR*, *ENFORCE*, *SHRIGHTS*, and *ACCOUNT* – pertain specifically to financial transactions, and are obtained from LLSV (1998). *CREDITOR* refers to the level of creditor protection, while *ENFORCE* is an index of the effectiveness of the legal system in enforcing contracts. *SHRIGHTS* is a measure of shareholder protection, and *ACCOUNT* is an index of the comprehensiveness of company reports. *LEGAL2* is the first standardized principal component of the four variables, and therefore depicts the overall development of the legal system governing financial transactions.<sup>19</sup> The summary statistics for these *LEGAL2* variables are reported in Table 4.

Before discussing the results, we make the following two observations. The first pertains to the temporal nature of these institutional variables. Although we use panel data specifications in the following analyses, the data on legal/institutional development are cross-sectional in nature,

---

<sup>17</sup> See Ito (2004) for more detailed discussions on the evolution of *KAOPEN* among countries.

<sup>18</sup> The first eigenvector for *Legal1* was found to be  $(Corrupt, LAO, BQ)' = (0.574, 0.580, 0.578)'$ , indicating that the variability of *LEGAL1* is not merely driven by any particular series.

<sup>19</sup> The first eigenvector for *Legal2* was found to be  $(Creditor, Enforce, Shrights, Account)' = (0.206, 0.670, 0.095,$

*i.e.*, they are time-invariant. However, the inclusion of these time-invariant factors do not pose a substantial problem for our analysis, since these characteristics represented by the legal/institutional variables are likely to change only very slowly.<sup>20</sup> Moreover, we focus mainly on the effect of financial openness on financial development, but not the effect of legal/institutional development *per se*. In other words, rather than shedding light on how the development of institutions and legal systems affects financial development, we examine how the effect of financial openness changes depending upon the “environment” of institutions and legal systems. Therefore, time-variation of the legal/institutional variables is not critical to our study.

The second issue is sample size. While the original panel encompasses 108 countries, the data set based on LLSV spans less than 50 countries.<sup>21</sup> There is minimal impact on the coverage of the industrialized countries, but the size of the LDC sample is substantially reduced. Consequently, our LDC sample in this portion of the analysis essentially becomes the emerging market group previously defined.<sup>22</sup> Hence, for the regressions with the first group of legal/institutional variables (*i.e.*, *LEGAL1*, *Corrupt*, *LAO*, and *BQ*), we will present results for the full sample and the subsamples for less developed countries (LDC) and emerging market countries (EMG) whereas for those with the second group of legal variables, we report results for the full sample and a subset titled the “LDC/EMG” category, which is mainly composed of EMG countries.

### 2.3 Empirical Results

The regression results for the model specified in equation (1) are reported in Tables 5-1 through 5-4. We focus on the coefficients of  $KAOPEN_{t-5}$  (first row), the legal variable (second row), and the interactive term between the legal variable and  $KAOPEN_{t-5}$  (third row). Our observations will mainly focus on the regressions with equity market development measures and especially those of less developed and emerging market countries.<sup>23</sup>

---

0.707)’.

<sup>20</sup> Stulz (1999) and Stiglitz (2000) argue that financial globalization puts pressure on governments to improve legal systems and infrastructure for financial markets. However, to our knowledge, there is no empirical evidence for the causality. Also, as previously mentioned, the ICRG legal variables are available since 1984, which also creates practical data constraints for us to use time-varying variables for legal and institutional development.

<sup>21</sup> More specifically, the data set contains *LEGAL* data for 38 countries, *CREDITOR* for 46 countries, *ENFORCE* for 48 countries, *SHRIGHTS* for 47 countries, and *ACCOUNT* for 40 countries.

<sup>22</sup> The LLSV cross-sectional data set used for this paper includes only three countries which are not either industrialized or emerging market countries by our definition.

<sup>23</sup> The definition of emerging market countries relies upon the International Financial Corporation’s (IFC) indices. The group of emerging market countries in this study refers to the countries which were included in either IFC’s Global, Investible, or Frontier Index as of 1995. By this definition, there are 31 EMG countries in our sample.

However, as has been mentioned previously, for the regressions with the *LEGAL2* (financial legal) variables, because

Table 5-1 reports the regression results for the models with *LEGALI*. We can see that when the regressions are controlled for the general development of legal systems and institutions (*LEGALI*), financial openness (*KAOPEN*<sub>*t-5*</sub>) contributes to financial development in equity markets, measured by stock market total values, in both LDC and EMG subsamples. In these models, the interactive effect between financial openness and legal development is also detected. Significant coefficients for the interactive term are also found in the models with other measures of equity market development for both LDC and EMG subsamples. However, we must be careful about how to interpret the overall effect of capital account openness because it depends on the level of legal development.<sup>24</sup> That is, given equation (1), the total effect of financial openness can be shown as:

$$\text{Total Effect of KA openness}^i = (\gamma_1 + \gamma_3 \bar{L}) \text{KAOPEN}_{t-5}^i,$$

where  $\bar{L}$  is the mean of a measure of legal development. For example, when we examine the regression specifications for the financial development measured in stock market total value for LDC and EMG groups in Table 5-1 (columns [7] and [11]), the total effect of a one-unit increase in *KAOPEN* is calculated to be  $-0.0005$  for less developed countries and  $0.005$  for emerging market countries if we use each subsample's average of *LEGALI*,  $-0.74$  for the former group and  $-0.28$  for the latter. Thus, although the estimated coefficients for *KAOPEN* and the interaction terms are not significantly different between LDC and EMG groups, the difference in the general level of legal and institutional development makes the effect of *KAOPEN* on equity market development quite different between the subsample groups; while opening capital accounts, on average, leads to a lower rate of development in equity markets among less developed countries, it leads to a more rapid rate of equity market development for emerging market countries. As another example, Peru, an emerging market country in our sample, increased its financial openness level from  $-1.84$  to  $2.25$  between 1990 and 1995. Given its *LEGALI* level of  $-1.65$ , the increase in financial openness would reduce the growth rate of stock market total value by  $4.0\%$  point annually. Argentina, another EMG country, experienced a smaller increase of  $3.15$  in its *KAOPEN* variable (from  $-1.17$  to  $1.98$ ), but because its *LEGALI* level is  $-0.175$ , higher than Peru's, its *SMTV* is predicted to *grow* at an additional  $1.9\%$  annually. Given that *SMTV* grew at  $2.72\%$  annually for emerging market

---

of data availability, there is no distinction between LDC and EMG, but there is a subgroup LDC/EMG.

<sup>24</sup> In case of the regressions with *LEGALI*, the fact that the variable can be negative for a lower value (see Table 3) also

countries during the 1990s (Table 1), this acceleration in the growth rate is significant. Thus, opening capital accounts can be effective for financial development only if a country has attained a threshold level of legal and institutional development.

Table 6 makes this point clear. In this table, row [A] shows the total effect of a one-unit increase in *KAOPEN* calculated using the estimates from the regression model with stock market total value for the subsample of less developed countries, evaluated at the average values of the legal variable for LDC and EMG (shown in row [B]). Row [C] shows the threshold level of the legal variable, above which a one-unit increase in capital account openness has a positive impact on equity market development. Thus we can conclude that, in order for capital account openness to contribute to the development of equity markets, countries must be possessed of a level of legal/institutional development greater than  $LEGALI = -0.69$ . Hence, emerging market countries (whose average value of  $LEGALI$   $-0.28$  exceeds the  $-0.69$  threshold), will on average benefit from opening their capital accounts. On the other hand, less developed countries will hamper their equity market development by opening capital accounts. In our dataset, Tunisia has a value of  $LEGALI$  closest to the threshold level (its value is  $-0.683$ ). The countries marginally above the threshold level include India and Morocco ( $-0.561$  and  $-0.566$ , respectively) among others, while those closely below include Mexico and Iran ( $-0.793$  and  $-0.738$ , respectively) among others.

Figure 1 depicts this clear difference in the correlation between capital account openness and equity market development. The upper scatter diagram (a) shows the relationship between the five-year change in the *KAOPEN* level five years prior to the time period (i.e., change between  $t-10$  and  $t-5$ ) and the level change in *SMTV* between  $t-5$  and the contemporary time period ( $t$ ) for the countries whose  $LEGALI$  value is above the threshold level, while diagram (b) is for those with lower  $LEGALI$  variables than the threshold. Not surprisingly, we can observe that, for the countries with above-threshold levels of general legal or institutional development, *KAOPEN* and *SMTV* have a positive relationship. For the countries with below-threshold levels of legal development, there is no discernable relationship between capital account opening and equity market development. Also, in these countries, equity markets appear to be far from active regardless of the degree of financial liberalization.

Table 5-2 summarizes the results from the regressions that are run with each of the components of  $LEGALI$  (i.e., *Corrupt*, *LAO*, and *BQ*) included individually and interactively. For

---

contributes to the complexity in the interpretation.

the sake of brevity, the table shows only the coefficients of the financial openness variable, the legal/institutional variable, and the interaction term. Across the different models with different measures of financial development, the significance of the estimated coefficients appears to be qualitatively the same as those of the regressions with *LEGAL1*. Table 6, again, helps our interpretation of the overall effect of *KAOPEN* for the models with *SMTV*. Generally, we can surmise that liberalizing capital accounts may lead to development in equity markets only when the measures against corruption or law and order are higher than the threshold levels (52.3 and 54.5, respectively). In other words, their measures need to be as well-established as in emerging market countries in order to reap the benefit of capital account liberalization. When we control for the level of bureaucratic quality, financial openness seems to lead to financial development among both less developed and emerging market countries (because of both subsample groups' higher average values than the threshold level), but its effect is higher for the latter group. Interestingly, we can observe that the coefficient of  $KAOPEN_{t-5}$  alone has a negative sign wherever the interactive term has a significant coefficient, suggesting that opening financial markets alone may lead to underdevelopment of equity markets, but it can be avoided only if the countries are equipped with a reasonable level of legal/institutional development.

When we focus on the effect of legal development relating particularly to financial transactions (*LEGAL2* and *LLSV* variables), the findings are not as decisive as in the previous cases (results shown in Tables 4-3 and 4-4).<sup>25</sup> Using *LEGAL2* as the legal/institutional variable (Table 5-3) in the LDC/EMG subgroup, its interactive effect with *LEGAL2*, and the *LEGAL2* level term are significant in the determination of the development in stock market total value. Table 6 shows that the total effect of financial openness is positive on average in the LDC/EMG subgroup (i.e., the subgroup's average level of legal development is higher than the threshold level). In other models for the LDC/EMG subgroup, however, neither financial openness nor its interactive term seems to affect banking or equity market development in a significant fashion.

Among the components of the financial legal development variable (*LEGAL2*), shown in Table 5-4 (which again only shows the coefficients of interest), the level of creditor protection seems to be an important factor for financial development in both banking and equity sectors while no interactive effect is detected. When contract enforcement is used as the legal/institutional

---

<sup>25</sup> As previously discussed, due to the data availability of the *LLSV* variables, there is only one subsample for non-industrialized countries, which we call LDC/EMG.



variable, in all models with equity market development, we can detect a positive interactive effect and a negative solo effect of the level of financial openness.<sup>26</sup> Among the models with shareholder protection, the level of share holder protection seems to matter for stock market capitalization while the level of financial openness contributes to stock market turnover. The models using accounting standards as the legal/institutional measure do not indicate any effect of financial openness on financial development.

Our findings suggest that in order for financial openness to help develop equity markets, the level of legal and institutional development is crucial. If a country tries to develop its equity markets while it is not equipped with well-developed legal systems or institutions, opening capital accounts may even harm the development of equity markets. Also, we find that it is the development of general legal systems and institutions, not of those specific to financial transactions, that is crucial for a country to benefit from opening its financial markets.

## 2.4 Robustness Checks

Here, we examine whether our baseline results are sensitive to outliers. Concerns about the impact of outliers flows from two issues. First, in addition to the usual measurement error present in macroeconomic data, it is likely that the data for financial development is subject to even greater measurement errors. Second, these financial development indicators may unintentionally capture financial bubbles, although the use of five year changes may serve to mitigate this concern. As a point of reference, it is useful to note that in many studies of lending booms as financial crises indicators, changes in lending or stock market sizes over a shorter window, of between 2 to 4 years are, often used.<sup>27</sup> Nonetheless, we investigate whether the regression results are being distorted by data outliers. In order to conserve space, we merely summarize the results and our observations below.

First, using the original annual data, we exclude the observations of financial development variables if their annual growth rates are two standard deviations away from the mean in both directions, and re-estimate the same sets of regressions.<sup>28</sup> The exclusion of outliers shrinks the

---

<sup>26</sup> The patterns of the significance of the coefficients are no coincidence. By construction, the components of *ENFORCE* are closest to *LEGALI* variables as shown in data appendix.

<sup>27</sup> See Corsetti, Pesenti, and Roubini (1998), Chinn, Dooley and Shrestha (1999), Kaminsky (2003), Kaminsky, Lizondo and Reinhart (1998), Kaminsky and Schmukler (2001), and Sachs, Tornell and Velasco (1996).

<sup>28</sup> Since we are dealing with a set of non-overlapping five year panels, in essence the only data for 1980, 1985, 1990, 1995, and 2000 are affected by the removal of outliers.

observation size by a relatively small degree, about 0 – 11%.<sup>29</sup> Generally, in the re-estimated results (not reported), the magnitude of the estimated coefficients often becomes smaller, but so do the standard errors, especially for the models with stock market related measures for the LDC and EMG subgroups. Therefore, not only does the statistical significance of the coefficients remain qualitatively unchanged, but in addition some of the coefficients which were previously insignificant become significant.

Interestingly, in many models the adjusted *R*-squared increases. This is most apparent in the models with *LEGAL2* and *ACCOUNT*. In this analysis for the LDC/EMG group, the coefficient of *LEGAL2* is now significant for the model with *SMKC*, and both the *KAOPEN* variable and the interactive term are statistically negative and positive, respectively, for the models with *SMKC* and *SMTV*. The same exercise is then repeated, but increasing the range of outlier exclusion by dropping the observations if their annual growth rates are larger than one and a half standard deviations away from the mean in both directions. This exclusion shrinks the sample size quite substantially (sometimes as much as 40%), although the results are largely unchanged. The fit and the significance of the coefficients even improves for the models for the LDC/EMG with *LEGAL2* and *ACCOUNT*. Two conclusions flow from this exercise. First, the key findings of the analysis are not driven by outliers. Second, some of the findings related to the legal/institutional variables could have even been obscured by the effects of outliers.

## 2.5 Reverse Causality?

One may reasonably ask if financial development is what allows countries to implement financial liberalization policy, rather than the reverse. While we have worked with non-overlapping, five-year window panels in order to mitigate problems associated with simultaneity, it may still be worthwhile to investigate whether countries need to develop their financial systems before undertaking capital account liberalization. Conversely, if we can show that reverse causality is irrelevant, that will be evidence that countries can develop their financial markets by *exogenously* deciding to open their financial markets.

To explore the above question, we change the specification in equation (1) by exchanging the places of *KAOPEN*<sub>*t*,5</sub> and financial development measures (*PCGDP*, *SMKC*, *SMTV*, and

---

<sup>29</sup> Exclusion of the outliers takes place more for the models with stock market total value and stock market turnover than those with private credit creation and stock market capitalization, which reflects that the former group are more subject to market volatility than the latter. The rate of exclusion is generally higher for the subgroup of emerging market countries for the same reason.

*SMTO*); the left-hand side variable is now the five-year average growth in *KAOPEN* while the independent variables of our focus now becomes the financial development variable and the interactive terms between the legal/institutional variables and the financial development variables. We run regressions specified as follows, using non-overlapping data and including each of the legal/institutional variables:

$$(2) \text{KAOPEN}_t^i - \text{KAOPEN}_{t-5}^i = \phi_0 + \phi_1 \text{KAOPEN}_{t-5}^i + \phi_2 \text{FD}_{t-5}^i + \phi_3 L^i + \phi_4 (L^i \times \text{FD}_{t-5}^i) + X_{t-5}^i \Phi + \nu_t^i .$$

The coefficient of our interest is  $\phi_1$ ; A significantly positive  $\phi_1$  would indicate that the above OLS regression results entail simultaneous causality, i.e., financial development leads to financial openness. The regression results (not reported) show that across the regressions with different financial development measures as well as legal/institutional variables, the coefficients,  $\phi_1$ 's, are mostly statistically insignificant or significantly negative, either of which is against the null hypothesis that financial development leads to financial openness. The significantly negative  $\phi_1$ 's are found in the regressions that have the dependent variable of the equity market development measures. One of the possible explanations for the negative  $\phi_1$  may be that a rapid growth in equity markets, in terms of the size of the markets (*SMKC*) or the liquidity of the markets (*SMTV* or *SMTO*) is sometimes associated with financial crises, and that policy makers lower the degree of financial openness during periods of crisis (Ito, 2004). At the very least, we can conclude that our estimation results are not subject to obvious simultaneity issues (as in Bekaert, et al., 2001).

### 3. Investigating the Sequence of Liberalization

#### 3.1 Trade and Capital Account Liberalization

One suggestive result we must discuss is the frequent finding of statistically significant and positive coefficients on the trade openness variable in the above estimation results based on equation (2).<sup>30</sup> To the extent that our trade openness variable reflects trade liberalization, our results are germane to the question if trade openness is a precondition for financial opening. This is the optimal sequence question, which has been raised by many, including McKinnon (1993). In fact, liberalization in goods markets is often claimed to be a precondition for financial

---

<sup>30</sup> Again, due to space considerations, the regression results are not reported. They are available upon request.

liberalization policy (Tornell et al., 2004).

We empirically explore this hypothesis by employing a simple model that accounts for the determinants of financial openness or restrictions. As stated in equation (3), we model financial openness is the function of government budget surplus, international reserves, trade openness, and per capita GDP.<sup>31</sup>

$$(3) \quad KAOPEN_t = \xi_0 + \xi_1 KAOPEN_{t-5} + \xi_2 TradeOpen_{t-5} + Z_{t-1|t-5} \Xi + v_t,$$

where  $Z_{t-1|t-5}$  is a vector of macroeconomic control variables, namely, government budget surplus, international reserves, and per capita GDP.<sup>32</sup> The rationale for using these macro variables follows the past literature. Grilli and Milesi-Ferretti (1995) showed that a higher level of restrictions on capital flows is empirically linked to higher rates of inflation, a higher share of seigniorage in total taxes, lower real interest rates, and a higher share of government consumption in GDP. Their finding implies that capital controls appear to have strong fiscal implications, *i.e.*, countries with a less developed tax system tend to implement capital controls as the source of government revenue as well as the remedy to capital flows caused by the inflation-driven distortions in the financial markets. In investigating the empirical determinants of capital controls, Johnson and Tamirisa (1998) find that countries tend to implement capital controls, the more prevalent the balance of payments concerns are, the higher real interest rates and real exchange rates,<sup>33</sup> and the larger the size of the government deficit as a share of GDP. We select two variables – the government budget surplus and international reserves – since they are most commonly argued as the determinants of capital controls.<sup>34</sup> We also include per capita GDP to control for the level of development of the

---

<sup>31</sup> The empirical model also controls for regional differences by regional dummies. In Glick, Guo and Hutchison (2004), an empirical model of capital account liberalization is proposed. Our set of explanatory variables overlaps, but does not match, theirs. In part the difference arises from their more empirically oriented motivation for model selection.

<sup>32</sup> The variable for gross international reserves is a proxy to the balance of payments situation of the countries and is measured by gross international reserves in months of imports. The lower gross reserves in months of imports, the higher prevalence of balance of payments concerns are. The data are extracted from the World Bank's *World Development Indicators*. Others have used international reserves as a ratio to M2 as a proxy to the balance of payments situation. The regression results shown in this paper are qualitatively unchanged if international reserves as a ratio to M2 are used.

<sup>33</sup> Their theoretical prediction, which contrasts with that of Grilli and Milesi-Ferretti, is that countries use capital controls to pursue inconsistent internal and external balances simultaneously such as the case where outflow controls are implemented to avoid nominal currency depreciation pressures without tightening of monetary conditions. When such a threat of currency crisis arises, the real interest rates or real exchange rates tends to be higher. See Leblang (1997) for more discussions on the determinants of capital controls.

<sup>34</sup> In addition to the above variables, we attempted to include variables that refer to the government engagement in

economic system. Since these variables are supposed to control for the general trend of macro variables, they are included as the 5-year average prior to the time period  $t$  (as shown as  $(t-1/t-5)$  in the regression results table).

With these macro variables, we test whether trade openness is a precondition for financial opening by including a five-year lagged variable for the trade openness measure. Although we used in the previous analyses, *opn*, the sum of exports and imports divided by GDP, as the trade openness variable, we use a different variable to measure openness in trade flows. By construction, the variable *opn* measures the openness in good transactions in terms of not only economic factors but also regulatory measures such as tariffs and quotas. As such, we use another variable *TRADEOPEN* which is a reciprocal of the duties imposed on both imports and exports.<sup>35</sup>

In order to minimize the possibility of two-way causality, we employ a non-overlapping panel data analysis as we did in previous analyses. While the macro variables are included as the five-year average, both *KAOPEN* and *TRADEOPEN* are included as the initial conditions of each five-year panel. In the empirical analysis, we focus on the coefficient  $\xi_2$  to see if the openness in goods trade can be a precondition for financial opening.

The first three columns of Table 7 report the regressions results. While the average budget surplus and GDP per capita enter significantly, but not international reserves, the trade openness variable seems to contribute to the level of financial openness in the full sample and the subsample for the less developed countries (the  $p$ -value for *TRADEOPEN* in the EMG subsample is 25%), indicating that the openness in goods transactions is a precondition for financial openness. Columns (4) through (6) of Table 7 show the results when we switch the places for *KAOPEN* and *TRADEOPEN* in the regression, in order to see whether the reverse causality also holds.<sup>36</sup> We can see that in both the full sample and the subsamples, the financial openness variable does not enter significantly. Hence, we can safely conclude that the more openness in goods transactions can lead to a more openness in capital account, but the reverse causality does not appear to be present, a

---

seigniorage, such as the inflation rate or the reserve ratio. However, these measures of seigniorage can cause multicollinearity in regression analysis due to its correlation with the level of government budget surplus, the reverse of which is often the reason for seigniorage. Therefore, we decided not to include seigniorage-related variables in our regression model.

<sup>35</sup> Import and export duties as a ratio to imports and exports, respectively, are available from the World Bank's *WDI*. The weighted average of these variables is calculated using the share of imports and exports in total trade and then subtracted from 100 to show the openness. Hence, the higher (or close to 100) *TRADEOPEN* is, the less duties imposed on trade flows in both directions, i.e., the more open trade flows are by regulation. Note the variable is included in log form.

<sup>36</sup> The variable for international reserves is not retained because it lacks a theoretical motivation.

result consistent with Tornell et al. (2004).

### 3.2 Endogeneity and the Sequence of Liberalization

Taking our cue from the results reported above, we implement two stage least squares (2SLS) estimation instrumenting the  $KAOPEN_{t-5}$  variable in equation (1) with the initial conditions of financial and trade openness five years prior to the variable (i.e., 10-year lagged), as well as government budget surplus and GDP per capita as the five-year average prior to  $t-5$  and regional dummies.<sup>37</sup> If we can detect the effect of financial openness on financial development, we can present evidence that financial opening which is preceded by trade opening leads to financial development in a model where the level of legal/institutional development is controlled for.

The results of applying 2SLS to a model that controls for the general development level of legal systems and institutions (*LEGALI*) are reported in Table 8. For the group of less developed countries, we can see that both the magnitude and the statistical significance of the estimated coefficients for the models with stock market capitalization (*SMKC*) and stock market total value (*SMTV*) increase. For the *SMKC*, the levels of both legal development and financial openness seem to be significant contributors to equity market development. When financial development is measured by stock market total value, in addition to the level effects of both financial openness and legal development, the interactive effect between the two is also identified. Similar results are also found in the group of emerging market countries. Given these results, we may conclude that financial opening succeeding trading opening leads to equity market development especially when it takes place in an economy with a reasonably developed legal system.

## 4. Interactions of Banks and Equity Markets

In this section, we investigate two questions. The first is whether the development of a banking sector a precondition for the development of an equity market? Second, does the development of one sector substitute or complement development in another?

### 4.1 Sequencing in Financial Development

We modify the basic regression model of equation (1) by adding a new term: the level of

---

<sup>37</sup> The international reserves variable is not included because of its insignificance in the previous analysis.

financial development in the alternative mode. For the regressions with equity market development, the initial level of banking development, private credit creation (*PCGDP*), in each five-year panel is included in the regression model whereas the initial level of equity market development, measured as stock market capitalization (*SMKC*), is included in the regressions for banking development as a comparison. The new equation is now:

$$(4) \quad FD_t^i - FD_{t-5}^i = \gamma_0 + \rho FD_{t-5}^i + \gamma_1 KAOPEN_{t-5}^i + \gamma_2 L^i + \gamma_3 (L^i \times KAOPEN_{t-5}^i) + \lambda_0 OtherFin_{t-5} + X_{t-5}^i \Gamma + \varepsilon_t^i$$

where *OtherFin* refers to *PCGDP* for the regressions on equity market development and to *SMKC* for the regression with *PCGDP*. As with the basic model, the regression is repeated for each of the financial development measures as the dependent variable and using different legal/institutional variables. Given the results from the previous section, we will only use the legal/institutional variables from the *LEGALI* group.

The regression results are summarized in Table 9. This table contains only the estimated coefficients for *OtherFin*<sub>*t-5*</sub> ( $\lambda_0$ ). While *SMKC*<sub>*t-5*</sub> never enters significantly for the models on banking development in both the full sample and the subsamples, the coefficient for *PCGDP*<sub>*t-5*</sub> is always significantly positive in the models with *SMKC* and *SMTV* for the LDC subsample with all the legal/institutional variables. These results suggest that banking development is an important precondition for the development in equity markets among less developed countries, while, as expected, the development in equity markets does not seem to be a precondition for banking development in any countries.

## 4.2 Complements or Substitutes?

We now investigate the question of whether banking and equity markets are complements or substitutes. To do so, we make only one modification to the previous empirical model. Instead of the initial level of a different type of financial development, we include a new variable ( $OtherFD_t^i - OtherFD_{t-5}^i$ ) which is the five-year average growth of financial development in another sector.

$$(5) \quad FD_t^i - FD_{t-5}^i = \gamma_0 + \rho FD_{t-5}^i + \gamma_1 KAOPEN_{t-5}^i + \gamma_2 L^i + \gamma_3 (L^i \times KAOPEN_{t-5}^i) + \tau_0 (OtherFD_t^i - OtherFD_{t-5}^i) + X_{t-5}^i \Gamma + \varepsilon_t^i$$

As in the previous analysis, the regressions on equity market development includes the five-year average growth of  $PCGDP$  as  $(OtherFD_t^i - OtherFD_{t-5}^i)$  and those with  $PCGDP$  includes the five-year average growth of  $SMKC$ . The estimator of our focus is now  $\tau_0$ ; a significantly positive (negative) coefficient estimate indicates that developments in equity and banking sectors are complements (substitutes).

Table 10 displays the estimated coefficients for  $(OtherFD_t^i - OtherFD_{t-5}^i)$ . Interestingly, in the LDC group with all the legal/institutional variables, both  $(PCGDP_t^i - PCGDP_{t-5}^i)$  in the  $SMKC$  model and  $(SMKC_t^i - SMKC_{t-5}^i)$  in the  $PCGDP$  model are significantly positive. This means that for the group of less developed countries, the development in banking sector and that in equity markets are complementary to each other. Given the results in the previous section, while less developed countries may well be able to develop their financial markets by opening capital account if it is equipped with a reasonable level of legal/institutional development, banking development and equity market development seem to have a synergistic effects.

## 5. Concluding Remarks

We began our empirical investigation by examining the nexus between capital account liberalization and financial development. Our key empirical results suggest that financial openness *does* contribute to equity market development, but only when a threshold level of general development of legal systems and institutions has been attained. Financial development – measured as activity of the stock market – appears to depend upon capital account openness both individually and in interaction with the level of legal development. Interestingly, finance-specific legal institutions do not seem to fulfill the same role. Hence, we conclude that the general level of legal development matters more than the level of finance-specific legal/institutional development. These results are robust to the presence of outliers in the data and simultaneity.

We also obtain a series of other results. First, we find that the opening of goods markets is a precondition for financial opening. When the financial openness variable is instrumented with trade openness, the contribution of the general level of legal development still remains significant. This finding could be interpreted as evidence that an increase in trade openness is a prolog to financial openness, and thence to financial development.



Second, using a specification that controls for the level of legal and institutional development, we show that the development in the banking sector is a precondition for the development in equity markets. Finally, developments in less developed country banking and equity markets have interactive effects working in both directions.

## References

- Aizenman, Joshua (2002). "Financial Opening: Evidence and Policy Options," *NBER Working Paper* No. 8900 (April).
- Aizenman, Joshua and Noy, I. (2004). "Endogenous Financial Openness: Efficiency and Political Economy Considerations," Manuscript, University of California, Santa Cruz.
- Arteta, Carlos, Barry Eichengreen and Charles Wyplosz (2001). "When does capital account liberalization help more than it hurts?" *NBER Working Paper* No. 8414 (August).
- Beck, Thorsten, Asli Demirgüç-Kunt, and Ross Levine (2000). "A new database on financial development and structure," *Policy Research Paper* No. 2147 (Washington, D.C.: World Bank).
- Beck, Thorsten., and Ross Levine (2002). "Industry Growth and Capital Allocation: Does Having a Market- or Bank-based System Matter?" *Journal of Financial Economics* 64, 147 – 180.
- Beim, David, and Charles W. Calomiris (2001). *Emerging Financial Markets*, (New York: McGraw Hill).
- Bekaert, Geert, Campbell Harvey, and Lundblad, C (2001). "Does Financial Liberalization Spur Growth?" *NBER Working Paper*.
- \_\_\_\_\_ (2000). "Emerging Equity Market and Economic Development," *NBER Working Paper* No. 7763 (April).
- Brown, Stephen J. and William N. Goetzmann (2001). "Hedge Funds With Style," EFA 2001 Barcelona Meetings; Yale ICF Working Paper No. 00-29.
- Brown, Stephen J., William N. Goetzmann, and James M. Park (1998). "Hedge Funds and the Asian Currency Crisis of 1997," Yale School of Management Working Paper No. F-58.
- Caprio, Gerald, Laeven, Luc, and Ross Levine (2003). "Governance and Bank Valuation." University of Minnesota, mimeo.
- Chinn, Menzie, Michael P. Dooley and Sona Shrestha (1999). "Latin America and East Asia in the Context of an Insurance Model of Currency Crises," *Journal of International Money and Finance* 18(4) (August): 659-681.
- Chinn, Menzie and Hiro Ito, (2002). "Capital Account Liberalization, Institutions and Financial Development: Cross Country Evidence" NBER Working Paper #8967.
- Claessens, Stijn, Simeon Djankov, Joseph Fan, Larry Lang (2002). "Expropriation of Minority Shareholders in East Asia," *Journal of Finance* 57.
- Claessens, Stijn, Daniela Klingebiel and Sergio L. Schmukler (2002). "Explaining the Migration

- of Stocks from Exchanges in Emerging Economies to International Centers,” Policy Research Working Paper Series #2816.
- Claessens, Stijn, Asli Demirgüç-Kunt, and Harry Huizinga (2001). “How Does Foreign Entry Affect Domestic Banking Markets?” *Journal of Banking and Finance*. 25, pp. 891 – 911.
- Corsetti, Giancarlo, Paolo Pesenti, and Nouriel Roubini (1998). “Paper Tigers? A Preliminary Assessment of the Asian Crisis. *NBER Working Paper No. 6783* (November). De Gregorio, José (1998), “Financial Integration, Financial Development and Economic Growth,” mimeo (Department of Industrial Engineering, Universidad de Chile, July).
- Dooley, Michael (1996). “A Survey of Literature on Controls of International Capital Transactions,” *IMF Staff Papers* 43(4) (December): 639 – 87.
- Edison, Hali J., Michael W. Klein, Luca Ricci, and Torsten Sløk, (2002). “Capital Account Liberalization and Economic Performance: A Review of the Literature,” mimeo (Washington, D.C.: IMF, May).
- Edison, Hali J. and Francis E. Warnock (2001). “A simple measure of the intensity of capital controls,” *International Finance Discussion Paper #708* (Washington, D.C.: Board of Governors of the Federal Reserve System, September).
- Edwards, Sebastian (2001). “Capital Mobility and Economic Performance: Are Emerging Economies Different?” *NBER Working Paper No. 8076* (January).
- \_\_\_\_\_ (1999). “How Effective are Capital Controls?” *Journal of Economic Perspectives* 13(4) (Fall): 65-84.
- Fung, William and David A. Hsieh (2001). “The Risk in Hedge Fund Strategies: Theory and Evidence from Trend Followers,” *Review of Financial Studies*, 14 (2001), 313-341.
- Glick, Reuven, Xueyan Guo and Michael Hutchison (2004). “Currency Crises, Capital Account Liberalization and Selection Bias,” paper presented at the conference on “Financial Globalization,” (Federal Reserve Bank of New York, Dec. 2-3).
- Grilli, Vittorio and Gian Maria Milesi-Ferretti (1995). “Economic Effects and Structural Determinants of Capital Controls,” *IMF Staff Papers* 42(3) (September): 517 – 51.
- Henry, Peter Blair (2000). “Stock Market Liberalization, Economic Reform and Emerging Market Equity Prices,” *Journal of Finance* 55(2): 529-564.
- International Monetary Fund (2001). *World Economic Outlook* (Washington, D.C.: IMF, September).
- Ito, Hiro (2004). “Is Financial Openness a Bad Thing? An Analysis on the Correlation Between Financial Liberalization and the Output Performance of Crisis-Hit Economies” UCSC Working Paper Series.
- Klein, Michael and Giovanni Olivei (2001). “Capital Account Liberalization, Financial Depth and Economic Growth,” mimeo (Medford, MA: Tufts).
- Kletzer, Ken and Ashoka Mody (2000). “Will Self-protection Policies Safeguard Emerging Markets from Crises?” Santa Cruz Center for International Economics Working Papers, #00-10.

- Johnston, R. Barry and Natalia T. Tamirisa (1998). "Why Do Countries Use Capital Controls?" *IMF Working Paper* WP/98/181 (Washington, D.C.: IMF, December).
- Kaminsky, Graciela (2003). "Varieties of Currency Crises" *NBER Working Paper Series*, #10193.
- Kaminsky, Graciela, Saul Lizondo, and Carmen Reinhart (1998). "Leading Indicators of Currency Crises," *International Monetary Fund Staff Papers*, 45, March, 1-48.
- Kaminsky, Graciela, and Sergio Schmukler (2002). "Short-Run Pain, Long-Run Gain: The Effects of Financial Liberalization," *World Bank Working Paper* No. 2912.
- \_\_\_\_\_ (2001a). "Short- or Long-Run Integration: Do Capital Controls Matter," *Brookings Trade Forum 2000* (Washington, DC: Brookings), pp. 125-178.
- \_\_\_\_\_ (2001b). "On Booms and Crashes: Financial Liberalization and Stock Market Cycles," mimeo, World Bank.
- Karolyi, Andrew (2003). "The Role of ADRs in the Development of Emerging Equity Markets," *Review of Economics and Statistics*, forthcoming.
- Kim, Woonchan and Shang-Jin Wei (2002). "Offshore Investment Funds: Monsters in Emerging Markets?," *Journal of Development Economics*, 2002, Vol. 848.
- Klein, Michael and Giovanni Olivei (2001). "Capital Account Liberalization, Financial Depth and Economic Growth," mimeo (Medford, MA: Tufts).
- Kletzer, Kenneth and Ashoka Mody (2000). "Will Self-Protection Policies Safeguard Emerging Markets from Crises?" *Managing Financial and Corporate Distress : Lessons from Asia*, in Charles Adams, Robert E. Litan, and Michael Pomerleano (editors) (Washington, D.C. : Brookings Institution).
- La Porta, R., Lopez-de-Silanes, F., Shleifer, A., Vishny, R.W. (1998). "Law and Finance," *Journal of Political Economy* 106, p. 113 – 1155.
- \_\_\_\_\_ (1997). "Legal Determination of External Finance," *Journal of Finance* 52, 1131 – 1150.
- Leahy, Michael, S. Schich, G. Wehinger, F. Pelgrin, and T. Thorgeirsson (2001). "Contributions of financial systems to growth in OECD countries," *OECD Economic Department Working Papers* No. 280.
- Leblang, David A. (1997). "Domestic and Systematic Determinants of Capital Controls in the Developed and Developing World" *International Studies Quarterly*, 41, p. 435 – 454.
- Levine, Ross, (2003). "Bank-based or market-based Financial Systems: Which is Better?" *Journal of Financial Intermediation* 11, 398 – 428.
- \_\_\_\_\_ (1998). "Stock Markets, Banks, and Economic Growth," *American Economic Review* 88, 537 – 58.
- Levine, Ross, Norman Loayza and Thorsten Beck (2000). "Financial intermediation and growth: Causality and causes", *Journal of Monetary Economics* 46: 31-77.
- Levine, Ross and Sergio L. Schmukler (2003). "Migration, Spillovers, and Trade Division: The Impact of Internationalization on Stock Market Liquidity," *University of Minnesota Working Paper*.

- McKinnon, Ronald I. (1973). *Money and Capital in Economic Development* (Washington, DC: Brookings Institution).
- Martell, Rodolfo and René Stulz (2003) “Equity Market Liberalization as Country IPOs,” *NBER Working Paper #9481*.
- Miniane, Jacques (2004). “A New Set of Measures on Capital Account Restrictions,” *IMF Staff Papers* 51(2).
- Neely, Christopher (1999). “An Introduction to Capital Controls,” *Review*, Federal Bank of St. Louis, November/December.
- Quinn, Dennis (1997). “The correlates of change in international financial regulation,” *American Political Science Review* 91(3): 531-551.
- Quinn, Dennis, A. Maria Toyoda and Carla Inclan (2002). “Does Capital Account Liberalization Lead to Economic Growth?: An Empirical Investigation” mimeo (Washington, D.C.: Georgetown University).
- Rajan, Kishen S. (2003). “Financial Integration in Asean and Beyond: Implications for Regional Monetary Integration,” presented at the ASEAN Roundtable 2003: “Roadmap to an ASEAN Economic Community,” organized by the Institute of Southeast Asian Studies (Singapore: August 20–21).
- Rajan, Raghuram G., Luigi Zingales (2003). “The Great Reversals: The Politics of Financial Development in the 20<sup>th</sup> Century,” *Journal of Financial Economics* 69.
- \_\_\_\_\_ (1998). “Financial Dependence and Growth,” *American Economic Review* 88, 559 – 586.
- Sachs, Jeffrey, Aaron Tornell, and Andres Velasco (1996). “Financial Crises in Emerging Markets: The Lessons from 1995” *NBER Working Paper No. 5576* (May).
- Sarkissian, Sergei and Michael J. Schill (2002). “The Overseas Listing Decision: New Evidence of Proximity Preference,” McGill University Working Paper.
- Schmukler, Sergio (2003). “Financial Globalization: Gains and Pain for Developing Countries,” World Bank.
- Shaw, Edward (1973). *Financial Deepening in Economic Development* (New York: Oxford University Press).
- Stiglitz, Joseph (2000). “Capital Market Liberalization, Economic Growth, and Instability,” *World Development*, 28:6, p. 1075 – 1086.
- Stultz, René (1999). “Globalization, Corporate Finance and the Cost of Capital,” *Journal of Applied Corporate Finance*, v12(3), 8-25.
- Spiegel, Mark (2001). “Financial development and growth: Are the APEC nations unique?” *Pacific Basin Working Papers PB01-04* (Federal Reserve Bank of San Francisco, June).
- Tornell, Aaron, Frank Westermann, and Lorenza Martinez (2004). “The Positive Link Between Financial Liberalization, Growth, and Crises.” *NBER Working Paper No. 10293* (February).

## Appendix 1: Data Definition and Sources

Key to abbreviations:

*BKL*: Beck, Kunt, and Levine (2000).

*IFS*: IMF, *International Financial Statistics*.

*LLSV*: La Porta, Lopez-de-Silanes, Shleifer, and Vishny (1998)

*Mody*: Personal communication from Ashok Mody, data based on *AREAER*

*PWT*: Penn World Table 6.1.

*WDI*: World Bank, *World Development Indicators*.

*ICRG*: *International Country Risk Guide*

### Macroeconomic Indicators

**current** – Current account balance as a ratio to GDP, *WDI*

**opn** – openness to trade, (nominal exports plus imports)/nominal GDP

**exports** – national currency (from national account, 90c), *IFS*

**imports** – national currency (from national account, 98c), *IFS*

**impduty** – import duty as a ratio to imports, *WDI*

**expduty** – export duty as a ratio to exports, *WDI*

**tradeopen** – the weighted average of **impduty** and **expduty** calculated using the share of imports and exports in total trade and then subtracted from 100. The higher (or close to 100) **tradeopen** is, the less duties imposed on trade flows in both directions.

**totalreserve** – international reserves in months of imports, *WDI*

**reserve\_m2** – international reserves as a ratio to M2, *IFS*

**rypc** = per capital real income in constant international dollars, *PWT*

**cpi** – Consumer price index (64), *IFS*

**infl** – Inflation rate calculated using log differences of CPIs (64), *IFS*

**gsur** – government budget surplus (+) or deficit (-) as a ratio to GDP, *WDI*

**pop** – population, 99z, *IFS*

### Regional Dummies

**idc** – equals one if industrialized country, and zero, otherwise (See the list of countries)

**emg** – equals one if emerging market country, and zero, otherwise (See the list of countries)

**asia** – dummy for Asian countries

**africa** – dummy for African countries

**westhem** – dummy for the countries in the west hemisphere

**europe** – dummy for European countries

**mideast** – dummy for Middle East countries

### Financial Development Indicators

**lly** – Liquid Liability to GDP (LLY), currency demand and interest-bearing liabilities of banks and other financial intermediaries divided by GDP, BKL, 1970-97.

**SMKC** – stock market capitalization ratio to GDP, BKL, 1970-97

**SMTV** – stock market total value traded to GDP, BKL, 1975-97

**SMTO** – stock market turn over ratio, BKL, 1975-97

**pvtbm** – private bond market capitalization to GDP, BKL, 1975-97

**pbm** – public bond market capitalization to GDP ratio, BKL, 1975-97

**eqty** – equity issues to GDP, BKL, 1975-97

**ltpd** – long-term private debt issues to GDP, BKL, 1975-97

**bts** – Deposit Money Bank Assets to Total Financial Assets, BKL, 1970 – 1997

**dmcb** – Deposit Money vs. Central Bank Assets, BKL, 1970 – 97

**dmgdp** – Deposit Money Bank Assets to GDP, BKL, 1970 – 97

**PCGDP** – Private Credit by Deposit Money Banks to GDP, BKL, 1970 – 97

**m2y** – Ratio of M2 to nominal GDP, *IFS*, 1970–99)

**pc** – private credit, either 22D.MZF, 22D.TZF, 22D.ZF, or 22D.IZF in *IFS*.

**reserve** – reserves of banks, 14A in *IFS*.

### Capital Controls Indicators

**k<sub>1</sub>** – multiple exchange rates, Mody

**k<sub>2</sub>** – restrictions on CA trans, Mody

**k<sub>3</sub>** – restrictions on KA trans, Mody  
**k<sub>4</sub>** – surrender of exports proceeds, Mody  
**SHAREk<sub>3</sub>** – Share of a five-year period, the observed year and the last four years, when the capital account was open. Authors' calculations  
**KAOPEN** – index for openness to capital account transactions. The first standardized principal components of k<sub>1</sub>, k<sub>2</sub>, SHAREk<sub>3</sub>, and k<sub>4</sub>. Authors' calculations.  
**blmkpr** – black market premium, World Bank  
**openn** – Quinn financial liberalization indicator, Quinn.

### Legal Institutional Variables

**LEGAL1** – legal index, the first principal component of *Corrupt*, *LAO*, and *BQ*.  
**Corrupt** – average of CORRUPTION in 1984 – 1997.  
**LAO** – average of Laworder in 1984 – 1997.  
**BQ** – average of BQ in 1984 – 1997.  
**corruption** – corruption index, ICRG.  
**lawoder** – index for Law and order, ICRG.  
**b** – index for bureaucratic quality, ICRG.  
**LEGAL2** – legal index, the first principal component of credit, enforce, shrights, and account, cross-sectional for 37 countries, LLSV  
**credit** – index of creditor protection, composed of the variables which incorporate the automatic stay proposition on the assets of a failing firm (“**noauto**”); the continuation of the old managers in a reorganization process (“**manages**”); restrictions for going into reorganization (“**restorg**”); and the seniority system of secured creditors (“**secured1**”), cross-sectional for 44 countries, LLSV  
**enforce** – index of the degree of law enforcement. Specifically, it is the average of “**jdsys**” (efficiency of the judicial system), “**rulelaw**” (rule of law), “**riskEx**” (risk of expropriation), and “**contrepu**” (risk of contract repudiation), average over period 1982 – 1995, cross-sectional for 46 countries, LLSV  
**shrights** – the sum of “**oneshvt**” (one share-one vote), “**bymail**” (proxy by mail allowed), “**noblock**” (shares not blocked before meeting), “**comulvt**” (cumulative voting/proportional representation), “**oppdmnty**” (oppressed minority), “**premprt**” (preemptive right to new issues), and “**esm**” (% of share capital to call an emergency shareholder meeting < 10%), cross-sectional for 46 countries, LLSV  
**account** – index of transparency and comprehensiveness of companies' (accounting) reports, based on data in 1990, cross-sectional for 38 countries, LLSV  
**corrupt** – corruption index, average over period 1982 – 1997, (International Country Risk Guide)  
**cn** – country code (1-105), see the country list

### Country list (108 countries)

1	612	DZA	Algeria	57	443	KWT	Kuwait
2	213	ARG	Argentina <sup>e</sup>	58	666	LSO	Lesotho
3	193	AUS	Australia <sup>i</sup>	59	674	MDG	Madagascar
4	122	AUT	Austria <sup>i</sup>	60	676	MWI	Malawi
5	313	BHS	Bahamas, The	61	548	MYS	Malaysia <sup>e</sup>
6	419	BHR	Bahrain, Kingdom of <sup>e</sup>	62	678	MLI	Mali
7	513	BGD	Bangladesh <sup>e</sup>	63	181	MLT	Malta
8	316	BRB	Barbados	64	682	MRT	Mauritania
9	124	BEL	Belgium <sup>i</sup>	65	684	MUS	Mauritius <sup>e</sup>
10	339	BLZ	Belize	66	273	MEX	Mexico <sup>e</sup>
11	638	BEN	Benin	67	686	MAR	Morocco <sup>e</sup>
12	218	BOL	Bolivia	68	558	NPL	Nepal
13	616	BWA	Botswana <sup>e</sup>	69	138	NLD	Netherlands <sup>i</sup>
14	223	BRA	Brazil <sup>e</sup>	70	196	NZL	New Zealand <sup>i</sup>
15	748	BFA	Burkina Faso	71	278	NIC	Nicaragua
16	618	BDI	Burundi	72	692	NER	Niger
17	622	CMR	Cameroon	73	694	NGA	Nigeria <sup>e</sup>
18	156	CAN	Canada <sup>i</sup>	74	142	NOR	Norway <sup>i</sup>
19	626	CAF	Central African Rep.	75	449	OMN	Oman <sup>e</sup>
20	628	TCO	Chad	76	564	PAK	Pakistan <sup>e</sup>
21	228	CHL	Chile <sup>e</sup>	77	283	PAN	Panama
22	924	CHN	China <sup>e</sup>	78	853	PNG	Papua New Guinea
23	233	COL	Colombia <sup>e</sup>	79	288	PRY	Paraguay
24	634	COG	Congo, Republic of	80	293	PER	Peru <sup>e</sup>
25	238	CRI	Costa Rica	81	566	PHL	Philippines <sup>e</sup>
26	662	CIV	Cote d'Ivoire <sup>e</sup>	82	182	PRT	Portugal <sup>i,e</sup>
27	423	CYP	Cyprus	83	714	RWA	Rwanda
28	128	DNK	Denmark <sup>i</sup>	84	456	SAU	Saudi Arabia <sup>e</sup>
29	243	DOM	Dominican Republic	85	722	SEN	Senegal
30	248	ECU	Ecuador <sup>e</sup>	86	718	SYC	Seychelles
31	469	EGY	Egypt <sup>e</sup>	87	724	SLE	Sierra Leone
32	253	SLV	El Salvador	88	576	SGP	Singapore <sup>e</sup>
33	819	FJI	Fiji	89	199	ZAF	South Africa <sup>e</sup>
34	172	FIN	Finland <sup>i</sup>	90	184	ESP	Spain <sup>i</sup>
35	132	FRA	France <sup>i</sup>	91	524	LKA	Sri Lanka <sup>e</sup>
36	646	GAB	Gabon	92	734	SWZ	Swaziland
37	648	GMB	Gambia, The	93	144	SWE	Sweden <sup>i</sup>
38	134	DEU	Germany <sup>i</sup>	94	146	CHE	Switzerland <sup>i</sup>
39	652	GHA	Ghana <sup>e</sup>	95	463	SYR	Syrian Arab Republic
40	174	GRC	Greece <sup>i,e</sup>	96	738	TZA	Tanzania
41	258	GTM	Guatemala	97	578	THA	Thailand <sup>e</sup>
42	263	HTI	Haiti	98	742	TGO	Togo
43	268	HND	Honduras	99	369	TTO	Trinidad and Tobago <sup>e</sup>
44	532	HKG	Hong Kong <sup>e</sup>	100	744	TUN	Tunisia <sup>e</sup>
45	176	ISL	Iceland <sup>i</sup>	101	186	TUR	Turkey <sup>e</sup>
46	534	IND	India <sup>e</sup>	102	746	UGA	Uganda
47	536	IDN	Indonesia <sup>e</sup>	103	112	GBR	United Kingdom <sup>i</sup>
48	429	IRN	Iran, Islamic Rep. of	104	111	USA	United States <sup>i</sup>
49	178	IRL	Ireland <sup>i</sup>	105	298	URY	Uruguay
50	436	ISR	Israel <sup>e</sup>	106	299	VEN	Venezuela, Rep. Bol. <sup>e</sup>
51	136	ITA	Italy <sup>i</sup>	107	754	ZMB	Zambia
52	343	JAM	Jamaica <sup>e</sup>	108	698	ZWE	Zimbabwe <sup>e</sup>
53	158	JPN	Japan <sup>i</sup>				
54	439	JOR	Jordan <sup>e</sup>				
55	664	KEN	Kenya <sup>e</sup>				
56	542	KOR	Korea <sup>e</sup>				

i – industrialized countries (IDC), 22 countries  
e – emerging market countries (EMG), 31 countries  
(Standard & Poor (2000))

## Appendix 2: The “Chinn-Ito” Index

*KAOPEN* is an index to measure a country’s degree of capital account openness. The dataset encompasses the time period of 1970-2000 for 108 countries. For a complete list of the countries, see the attached country list.

### Construction of *KAOPEN*

*KAOPEN* is based on the four binary dummy variables reported in the IMF’s *Annual Report on Exchange Arrangements and Exchange Restrictions (AREAER)*. These variables are to provide information on the extent and nature of the restrictions on external accounts for a wide cross-section of countries. These variables are:

- $k_1$ : variable indicating the presence of multiple exchange rates;
- $k_2$ : variable indicating restrictions on current account transactions;
- $k_3$ : variable indicating restrictions on capital account transactions; and
- $k_4$ : variable indicating the requirement of the surrender of export proceeds.

In order to focus on the effect of *financial openness* – rather than *controls* – we reverse the values of these binary variables, such that the variables are equal to one when the capital account restrictions are non-existent. Moreover, for controls on capital transitions ( $k_3$ ), we use the share of a five-year window (encompassing year  $t$  and the preceding four years) that capital controls were not in effect ( $SHAREk_3$ ).

$$SHAREk_{3,t} = \left( \frac{k_{3,t} + k_{3,t-1} + k_{3,t-2} + k_{3,t-3} + k_{3,t-4}}{5} \right)$$

Then we construct an index for capital “openness” ( $KAOPEN_t$ ), which is the first standardized principal component of  $k_{1,t}$ ,  $k_{2,t}$ ,  $SHAREk_3$ ,  $k_{4,t}$ . This index takes on higher values the more open the country is to cross-border capital transactions. By construction, the series has a mean of zero. The first eigenvector for *KAOPEN* was found to be  $(SHAREk_3, k_1, k_2, k_4)' = (0.577, 0.270, 0.526, 0.563)'$ , indicating that the variability of *KAOPEN* is not merely driven by the  $SHAREk_3$  series.

We incorporate the  $k_{1,t}$ ,  $k_{2,t}$ , and  $k_{4,t}$  variables in our *KAOPEN* variable instead of focusing on  $k_3$  which refers to restrictions on capital account transactions. We believe the incorporation of  $k_{1,t}$ ,  $k_{2,t}$ , and  $k_{4,t}$  in this index allows us to more accurately capture the intensity of the capital controls. This point can be made more concrete by considering a country with an open capital account. It may still restrict the flow of capital by limiting transactions on the current account restrictions or other systems such as multiple exchange rates and requirements to surrender export proceeds. Alternatively, countries that already have closed capital accounts might try to increase the stringency of those controls by imposing  $k_1$ ,  $k_2$ , and  $k_4$  types of restrictions so that the private sector cannot circumvent the capital account restrictions.

Clearly, the measurement of the extent of capital account controls is a difficult enterprise. Many researchers have tried to capture the complexity of real-world capital controls, with varying degrees of success, and varying degrees of coverage. For reviews and comparisons of various measures on capital controls, refer to Edwards (2001), Edison *et al.* (2002) and Eichengreen (2002).



**Tale 1: Growth rates of *PCGDP*, *SMKC*, *SMTV*, and *SMTO*  
1970 – 2000 and decades**

	<b>Growth rates of</b>			
	<i>Private Credit Creation (PCGDP)</i>	<i>Stock Market Capitalization (SMKC)</i>	<i>Stock Market Total Value (SMTV)</i>	<i>Stock Market Turnover (SMTO)</i>
1970 – 2000				
Full	0.79%	1.93%	1.87%	2.47%
IDC	1.52%	2.96%	3.67%	3.45%
LDC	0.55%	1.32%	0.84%	1.87%
EMG	0.82%	1.49%	1.09%	2.49%
1970 – 1979				
Full	0.62%	0.47%	0.18%	0.35%
IDC	0.77%	-0.22%	0.25%	-0.35%
LDC	0.57%	1.70%	0.11%	1.85%
EMG	0.70%	1.29%	0.09%	1.55%
1980 – 1989				
Full	0.68%	1.52%	1.33%	1.98%
IDC	1.99%	2.89%	2.25%	3.61%
LDC	0.30%	0.53%	0.70%	0.78%
EMG	0.49%	0.70%	0.82%	1.16%
1990 – 2000				
Full	1.10%	3.18%	2.88%	2.96%
IDC	1.48%	5.29%	5.63%	3.17%
LDC	1.00%	2.18%	1.63%	2.87%
EMG	1.60%	2.45%	2.72%	4.23%
1995 – 2000				
Full	1.72%	2.70%	3.50%	3.82%
IDC	2.33%	9.73%	9.41%	4.60%
LDC	1.56%	-0.31%	0.95%	3.49%
EMG	2.36%	-1.40%	2.25%	5.99%

**Notes:** For the data description, refer to section 2.2.1 as well as Appendix 1. The original data are extracted from the updated version of the Beck, Kunt, and Levine (2000) dataset.

**Tale 2: Averages of *KAOPEN*, *k1*, *k2*, *k3*, and *k4*  
1970 – 2000 and decades**

	Averages of				
	<i>KAOPEN</i>	<i>k1</i>	<i>k2</i>	<i>k3</i>	<i>k4</i>
1970 – 2000					
Full	0.000	0.792	0.516	0.334	0.263
IDC	1.121	0.912	0.865	0.547	0.602
LDC	-0.287	0.762	0.428	0.280	0.178
EMG	-0.252	0.747	0.398	0.301	0.209
1970 – 1979					
Full	-0.288	0.747	0.520	0.194	0.204
IDC	0.247	0.795	0.763	0.216	0.390
LDC	-0.433	0.735	0.457	0.188	0.156
EMG	-0.555	0.709	0.405	0.202	0.084
1980 – 1989					
Full	-0.306	0.758	0.458	0.212	0.196
IDC	0.791	0.929	0.852	0.400	0.490
LDC	-0.579	0.716	0.362	0.166	0.123
EMG	-0.582	0.690	0.290	0.187	0.142
1990 – 2000					
Full	0.501	0.862	0.564	0.564	0.376
IDC	2.160	1.000	0.963	0.963	0.883
LDC	0.087	0.827	0.463	0.463	0.247
EMG	0.298	0.833	0.490	0.490	0.379
1995 – 2000					
Full	0.719	0.895	0.546	0.546	0.452
IDC	2.438	1.000	0.962	0.962	0.992
LDC	0.282	0.868	0.440	0.440	0.314
EMG	0.608	0.882	0.516	0.516	0.473

**Notes:** *KAOPEN* is an index for the openness in capital account transactions and is the first standardized principal component of *SHAREk3*, *k1*, *k2*, and *k4*. *k1* indicates the presence of multiple exchange rates; *k2* indicates restrictions on current account transactions; *k3* indicates restrictions on capital account transactions; and *k4* indicates the requirement of the surrender of export proceeds. In order to focus on the effect of *financial openness* – rather than *controls* – we reverse the values of these binary variables, such that the variables are equal to one when the capital account restrictions are non-existent. The first eigenvector for *KAOPEN* was found to be  $(SHAREk_3, k_1, k_2, k_4)' = (0.577, 0.270, 0.526, 0.563)'$ , indicating that the variability of *KAOPEN* is not merely driven by the *SHAREk3* series. The average of *KAOPEN* across countries over the full time period is zero by construction. See Appendix 2 for more details.

**Table 3: Summary Statistics on *Legal1* variables**

		Mean	Std. Dev.	Min	Max
<b>Legal1</b>	Total	0.00	1.63	-2.93	3.06
	IDC	2.41	0.75	0.68	3.06
	LDC	-0.74	0.98	-2.93	1.76
	EMG	-0.28	0.98	-1.98	1.76
<b>Corrupt</b>	Total	58.40	21.93	15.18	100.00
	IDC	88.27	10.94	62.80	100.00
	LDC	49.27	15.28	15.18	87.20
	EMG	54.73	15.02	26.79	87.20
<b>LAO</b>	Total	60.87	22.82	22.62	100.00
	IDC	93.63	8.83	68.75	100.00
	LDC	50.85	15.00	22.62	87.80
	EMG	55.76	18.01	22.62	87.80
<b>BQ</b>	Total	58.86	24.73	16.67	100.00
	IDC	92.26	13.77	57.89	100.00
	LDC	48.66	17.14	16.67	93.45
	EMG	56.44	14.26	29.32	93.45

**Notes:** *LEGAL1* is the first principal component of *Corrupt*, *LAO*, *BQ*, indicating the general level of legal/institutional development. *Corrupt*, *LAO*, and *BQ* measure the level of corruption, law and order, and the quality of the bureaucratic system, respectively. All of these data series included in *LEGAL1* are obtained from the ICRG database. In these indexes, higher values indicate better conditions. The data series are available for the period of 1984 through 1997, but are included as the period-average in order to maintain comparability with the *LEGAL2* variables. The first eigenvector for *Legal1* was found to be  $(Corrupt, LAO, BQ)' = (0.574, 0.580, 0.578)'$ , indicating that the variability of *LEGAL1* is not merely driven by any particular series.

**Table 4: Summary Statistics on *Legal2* variables**

		Mean	Std. Dev.	Min	Max
<b>Legal2</b>	Total	0.00	1.31	-2.71	1.89
	IDC	0.70	0.86	-1.59	1.89
	LDC/EMG	-0.77	1.31	-2.71	1.77
<b>Creditor protection</b>	Total	2.30	1.38	0.00	4.00
	IDC	1.81	0.98	0.00	4.00
	LDC/EMG	2.72	1.54	0.00	4.00
<b>Contract Enforcement</b>	Total	7.52	1.85	4.38	9.99
	IDC	9.24	0.83	6.73	9.99
	LDC/EMG	6.18	1.19	4.38	9.18
<b>Shareholder Protection</b>	Total	2.45	1.28	0.00	5.00
	IDC	2.19	1.29	0.00	4.00
	LDC/EMG	2.65	1.26	1.00	5.00
<b>Accounting Standards</b>	Total	6.08	1.36	2.40	8.30
	IDC	6.62	1.04	3.60	8.30
	LDC/EMG	5.55	1.44	2.40	7.80

**Notes:** *LEGAL2* is the first standardized principal component of *CREDITOR*, *ENFORCE*, *SHRIGHTS*, and *ACCOUNT*, and depicts the overall development of the legal system governing financial transactions. *CREDITOR* refers to the level of creditor protection, while *ENFORCE* is an index of the effectiveness of the legal system in enforcing contracts. *SHRIGHTS* is a measure of shareholder protection, and *ACCOUNT* is an index of the comprehensiveness of company reports. This group of legal variables pertain specifically to financial transactions, and are obtained from LLSV (1998). The first eigenvector for *Legal2* was found to be  $(Creditor, Enforce, Shrights, Account)' = (0.206, 0.670, 0.095, 0.707)'$ .

**Table 5-1: Financial Development, Financial Openness, and Legal/Institutional Development**  
**(LEGAL1: General Legal/Institutional Development)**  
 FULL, LDC, and EMG: Five year panels, 1980-2000

		FULL				LDC				EMG			
	Pred sign	Private Credit [1]	Stock Mkt Capital'n [2]	Stock Mkt Total Value [3]	Stock Mkt Turnover [4]	Private Credit [5]	Stock Mkt Capital'n [6]	Stock Mkt Total Value [7]	Stock Mkt Turnover [8]	Private Credit [9]	Stock Mkt Capital'n [10]	Stock Mkt Total Value [11]	Stock Mkt Turnover [12]
<b>Legal/Inst. Variable: LEGAL1</b>													
Financial Openness [t-5]	(+)	0.0027 [0.0011]**	-0.0009 [0.0041]	-0.0036 [0.0031]	-0.0041 [0.0097]	0.0005 [0.0013]	0.0049 [0.0078]	0.0071 [0.0042]*	0.0096 [0.0123]	0.0028 [0.0024]	0.0097 [0.0070]	0.0082 [0.0044]*	0.0013 [0.0180]
LEVEL: LEGAL1	(+)	0.0014 [0.0010]	-0.0025 [0.0057]	-0.004 [0.0051]	-0.0047 [0.0127]	0.0011 [0.0014]	0.0126 [0.0081]	0.0092 [0.0053]*	0.0048 [0.0186]	0.0078 [0.0032]**	0.0178 [0.0098]*	0.0119 [0.0082]	0.0101 [0.0276]
INTERACTION: LEGAL1 x Fin. Open. [t-5]	(+)	0.0005 [0.0005]	0.0035 [0.0019]*	0.0037 [0.0015]**	0.0046 [0.0039]	-0.0009 [0.0010]	0.0037 [0.0043]	0.0103 [0.0035]***	0.0213 [0.0109]*	0.0024 [0.0025]	0.0072 [0.0042]*	0.0119 [0.0033]***	0.0191 [0.0102]*
Financial Deepening [t-5]	(-)	-0.017 [0.0085]**	-0.0335 [0.0307]	0.1446 [0.0936]	-0.0358 [0.0344]	0.0001 [0.0119]	-0.0493 [0.0380]	0.0795 [0.1187]	-0.0033 [0.0536]	-0.0117 [0.0139]	-0.035 [0.0382]	0.0925 [0.1208]	0.0014 [0.0683]
Per Capita Income [t-5]	(+)	0.0037 [0.0015]**	0.0164 [0.0106]	0.016 [0.0104]	0.0054 [0.0227]	0.0031 [0.0015]**	0.0188 [0.0126]	0.0128 [0.0123]	-0.0023 [0.0273]	-0.0031 [0.0030]	0.0019 [0.0125]	0.0049 [0.0159]	-0.0134 [0.0448]
Inflation [t-5]	(-)	-0.0112 [0.0074]	-0.0548 [0.0208]***	-0.0317 [0.0266]	-0.056 [0.0919]	-0.0047 [0.0074]	-0.0498 [0.0303]	-0.0221 [0.0316]	-0.0815 [0.1166]	-0.0247 [0.0104]**	-0.0335 [0.0292]	-0.0163 [0.0413]	-0.1094 [0.1862]
Trade Openness [t-5]	(+)	0 [0.0000]*	0.0002 [0.0001]**	-0.0001 [0.0001]	-0.0003 [0.0001]**	0.0000 [0.0000]	0.0001 [0.0001]	-0.0003 [0.0002]*	-0.0006 [0.0003]*	0.0000 [0.0001]	0.0000 [0.0001]	-0.0003 [0.0002]**	-0.0006 [0.0003]**
N		408	175	206	172	289	101	115	98	138	87	97	85
Adj. R-sq.		0.15	0.11	0.28	0.03	0.09	0.2	0.16	-0.01	0.16	0.19	0.18	0.01

**Notes:** Point estimates from OLS, heteroskedasticity robust standard errors in parentheses. Dependent variable is the average annual growth rate over a five year period. Financial openness is measured by the Chinn-Ito index (*KAOPEN*). Regressions include fixed time effects (estimates not reported). Observations of inflation rates in excess of 100% are dropped from the sample. (\*)[\*\*][\*\*\*] indicates marginal significance at the (10%)[5%][1%] level.

**Table 5-2: Financial Development, Financial Openness, and Legal/Institutional Development**  
**(Components of LEGAL1: Corruption, Law and Order, and Bureaucracy Quality)**  
 FULL, LDC, and EMG: Five year panels, 1980-2000

		FULL				LDC				EMG			
	Pred sign	Private Credit [1]	Stock Mkt Capital'n [2]	Stock Mkt Total Val. [3]	Stock Mkt Turnover [4]	Private Credit [5]	Stock Mkt Capital'n [6]	Stock Mkt Total Val. [7]	Stock Mkt Turnover [8]	Private Credit [9]	Stock Mkt Capital'n [10]	Stock Mkt Total Val. [11]	Stock Mkt Turnover [12]
<b>Legal/Inst. Variable: <i>Corrupt</i> (Corruption)</b>													
Financial Openness [t-5]	(+)	-0.0009 [0.0027]	-0.0129 [0.0100]	-0.0196 [0.0071]***	-0.0311 [0.0262]	0.0009 [0.0038]	-0.0112 [0.0134]	-0.0314 [0.0110]***	-0.0613 [0.0410]	-0.006 [0.0091]	-0.0193 [0.0146]	-0.0363 [0.0125]***	-0.0637 [0.0462]
LEVEL: <i>CORRUPT</i>	(+)	0.0001 [0.0001]	0.0003 [0.0005]	-0.0002 [0.0003]	-0.0012 [0.0008]	0.0000 [0.0001]	0.0014 [0.0007]**	0.0004 [0.0004]	-0.0011 [0.0011]	0.0004 [0.0002]*	0.0017 [0.0007]**	0.0005 [0.0006]	-0.0012 [0.0016]
INTERACTION: <i>Corrupt</i> x Fin. Opn. [t-5]	(+)	0.0001 [0.0000]	0.0002 [0.0001]	0.0003 [0.0001]**	0.0004 [0.0003]	0.0000 [0.0001]	0.0003 [0.0003]	0.0006 [0.0002]***	0.001 [0.0006]*	0.0002 [0.0002]	0.0005 [0.0003]*	0.0007 [0.0002]***	0.0009 [0.0006]
N		408	175	206	172	289	101	115	98	138	87	97	85
Adj. R-sq.		0.15	0.12	0.28	0.03	0.09	0.23	0.16	-0.01	0.14	0.24	0.18	0
<b>Legal/Inst. Variable: <i>LAO</i> (Law and order)</b>													
Financial Openness [t-5]	(+)	-0.0003 [0.0025]	-0.0172 [0.0098]*	-0.0173 [0.0084]**	-0.0205 [0.0230]	0.004 [0.0029]	-0.0217 [0.0126]*	-0.0218 [0.0119]*	-0.0629 [0.0445]	-0.0078 [0.0077]	-0.0278 [0.0107]**	-0.0239 [0.0106]**	-0.0536 [0.0386]
LEVEL: <i>LAO</i>	(+)	0.0001 [0.0001]	-0.0003 [0.0004]	-0.0001 [0.0003]	0.0001 [0.0007]	0.0001 [0.0001]	0.0004 [0.0004]	0.0003 [0.0003]	0.0005 [0.0009]	0.0004 [0.0002]**	0.0006 [0.0004]	0.0003 [0.0004]	0.0008 [0.0011]
INTERACTION: <i>LAO</i> x Fin. Opn. [t-5]	(+)	0 [0.0000]	0.0003 [0.0001]**	0.0002 [0.0001]*	0.0003 [0.0003]	-0.0001 [0.0001]	0.0004 [0.0003]	0.0004 [0.0002]*	0.0011 [0.0007]	0.0001 [0.0001]	0.0006 [0.0002]**	0.0004 [0.0002]**	0.0008 [0.0005]
N		408	175	206	172	289	101	115	98	138	87	97	85
Adj. R-sq.		0.15	0.12	0.28	0.03	0.09	0.2	0.12	-0.02	0.14	0.19	0.12	-0.01
<b>Legal/Inst. Variable: <i>BQ</i> (Bureaucracy Quality)</b>													
Financial Openness [t-5]	(+)	0.002 [0.0024]	-0.0071 [0.0102]	-0.0119 [0.0070]*	-0.0102 [0.0207]	0.0048 [0.0032]	0.0057 [0.0107]	-0.0269 [0.0129]**	-0.0564 [0.0334]*	-0.0035 [0.0079]	0.009 [0.0137]	-0.0335 [0.0166]**	-0.0752 [0.0473]
LEVEL: <i>BQ</i>	(+)	0.0001 [0.0001]*	0 [0.0004]	-0.0001 [0.0002]	0.0004 [0.0007]	0.0001 [0.0001]	0.0003 [0.0005]	0.0007 [0.0004]*	0.0014 [0.0010]	0.0002 [0.0002]	0.0004 [0.0006]	0.0009 [0.0005]*	0.0019 [0.0014]
INTERACTION: <i>BQ</i> x Fin. Opn. [t-5]	(+)	0 [0.0000]	0.0001 [0.0001]	0.0002 [0.0001]	0.0001 [0.0002]	-0.0001 [0.0001]	-0.0001 [0.0002]	0.0006 [0.0003]**	0.0011 [0.0006]**	0.0001 [0.0001]	-0.0001 [0.0003]	0.0007 [0.0003]**	0.0014 [0.0007]*
N		408	175	206	172	289	101	115	98	138	87	97	85
Adj. R-sq.		0.15	0.1	0.27	0.02	0.1	0.18	0.17	0	0.11	0.15	0.17	0.02

**Notes:** Point estimates from OLS, heteroskedasticity robust standard errors in parentheses. Dependent variable is the average annual growth rate over a five year period. Financial openness is measured by the Chinn-Ito index (*KAOPEN*). Regressions include fixed time effects (estimates not reported). Observations of inflation rates in excess of 100% are dropped from the sample. (\*)[\*\*][\*\*\*] indicates marginal significance at the (10%)[5%][1%] level.

**Table 5-3: Financial Development, Financial Openness, and Legal/Institutional Development**  
**(LEGAL2: Legal Development pertaining to Financial Transactions)**  
 FULL, LDC, and EMG: Five year panels, 1980-2000

		FULL				LDC/EMG			
	Pred sign	Private Credit [1]	Stock Mkt Capital'n [2]	Stock Mkt Total Val. [3]	Stock Mkt Turnover [4]	Private Credit [5]	Stock Mkt Capital'n [6]	Stock Mkt Total Val. [7]	Stock Mkt Turnover [8]
<b>Legal/Inst. Variable: LEGAL2</b>									
Financial Openness [t-5]	(+)	0.0036 [0.0016]**	0.002 [0.0053]	0.0018 [0.0037]	0.0053 [0.0093]	0.0000 [0.0020]	0.0071 [0.0137]	0.0112 [0.0063]*	0.0195 [0.0188]
LEVEL: LEGAL2	(+)	-0.0001 [0.0022]	0.0087 [0.0066]	0.0027 [0.0057]	0.0126 [0.0177]	0.001 [0.0033]	0.0176 [0.0116]	0.0142 [0.0087]*	0.0289 [0.0261]
INTERACTION: LEGAL2 x Fin. Open. [t-5]	(+)	0.0000 [0.0013]	0.0055 [0.0030]*	0.0036 [0.0031]	-0.0028 [0.0049]	-0.0013 [0.0017]	0.0029 [0.0071]	0.0077 [0.0041]*	0.0113 [0.0111]
Financial Deepening [t-5]	(-)	-0.0274 [0.0109]**	-0.0465 [0.0367]	0.0997 [0.1083]	-0.0637 [0.0433]	-0.0106 [0.0173]	-0.0532 [0.0454]	0.0212 [0.1443]	-0.0468 [0.0684]
Per Capita Income [t-5]	(+)	0.0025 [0.0026]	0.0004 [0.0097]	0.0047 [0.0084]	-0.0126 [0.0244]	0.0034 [0.0033]	0.0161 [0.0112]	0.012 [0.0112]	-0.004 [0.0314]
Inflation [t-5]	(-)	-0.0237 [0.0140]*	-0.0423 [0.0262]	-0.0203 [0.0345]	0.005 [0.1032]	-0.0206 [0.0149]	-0.0405 [0.0305]	-0.0016 [0.0381]	0.0109 [0.1349]
Trade Openness [t-5]	(+)	0.0000 [0.0000]	0.0002 [0.0001]	-0.0001 [0.0001]	-0.0002 [0.0001]*	0.0000 [0.0000]	0.0001 [0.0003]	-0.0003 [0.0002]	-0.0007 [0.0005]
N		188	124	148	123	93	60	68	59
Adj. R-sq.		0.11	0.11	0.29	0.05	0.17	0.14	0.12	-0.05

**Notes:** Point estimates from OLS, heteroskedasticity robust standard errors in parentheses. Dependent variable is the average annual growth rate over a five year period. Financial openness is measured by the Chinn-Ito index (*KAOPEN*). Regressions include fixed time effects (estimates not reported). Observations of inflation rates in excess of 100% are dropped from the sample. (\*)[\*\*][\*\*\*] indicates marginal significance at the (10%)[5%][1%] level. Due to the data availability of the LLSV variables, there is only one subsample for non-industrialized countries, which we call LDC/EMG.

**Table 5-4: Financial Development, Financial Openness, and Legal/Institutional Development  
(Creditor Protection, Contract Enforcement, Shareholder Protection, and Accounting Standards)  
FULL, LDC, and EMG: Five year panels, 1980-2000**

		FULL				LDC/EMG			
	Pred sign	Private Credit [1]	Stock Mkt Capital'n [2]	Stock Mkt Total Val. [3]	Stock Mkt Turnover [4]	Private Credit [5]	Stock Mkt Capital'n [6]	Stock Mkt Total Val. [7]	Stock Mkt Turnover [8]
<b>Legal/Inst. Variable: CREDITOR (Creditor Protection)</b>									
Financial Openness [t-5]	(+)	0.0003 [0.0022]	0.0031 [0.0060]	0.0036 [0.0056]	0.0033 [0.0105]	0.0011 [0.0038]	-0.0013 [0.0050]	-0.002 [0.0049]	-0.0057 [0.0206]
LEVEL: <i>CREDITOR</i>	(+)	0.0029 [0.0016]*	-0.002 [0.0038]	0.0011 [0.0035]	0.0169 [0.0089]*	0.003 [0.0018]*	0.0027 [0.0035]	0.009 [0.0045]*	0.0202 [0.0118]*
INTERACTION: <i>CREDITOR</i> x Fin. Opn. [t-5]	(+)	0.0012 [0.0010]	-0.0003 [0.0023]	-0.0014 [0.0021]	-0.0018 [0.0034]	-0.0001 [0.0014]	0.0014 [0.0023]	0.0017 [0.0018]	0.0006 [0.0048]
N		230	145	169	143	129	80	88	78
Adj. R-sq.		0.14	0.07	0.27	0.05	0.15	0.19	0.12	-0.01
<b>Legal/Inst. Variable: ENFORCE (Contract Enforcement)</b>									
Financial Openness [t-5]	(+)	-0.0044 [0.0057]	-0.0344 [0.0161]**	-0.0212 [0.0126]*	-0.0247 [0.0430]	-0.0081 [0.0132]	-0.0532 [0.0231]**	-0.0589 [0.0203]***	-0.1515 [0.0979]
LEVEL: <i>ENFORCE</i>	(+)	0.002 [0.0014]	-0.0067 [0.0070]	-0.0029 [0.0058]	0.0002 [0.0219]	0.006 [0.0028]**	0.0038 [0.0080]	0.0098 [0.0079]	0.008 [0.0341]
INTERACTION: <i>ENFORCE</i> x Fin. Opn. [t-5]	(+)	0.001 [0.0007]	0.0051 [0.0021]**	0.003 [0.0017]*	0.0034 [0.0054]	0.0015 [0.0021]	0.0093 [0.0042]**	0.01 [0.0033]***	0.0244 [0.0144]*
N		240	151	178	149	139	86	97	84
Adj. R-sq.		0.12	0.11	0.28	0.04	0.16	0.23	0.18	0.03
<b>Legal/Inst. Variable: SHRIGHTS (Shareholder Protection)</b>									
Financial Openness [t-5]	(+)	0.0031 [0.0022]	0.0039 [0.0047]	0.0021 [0.0043]	0.024 [0.0149]	-0.0032 [0.0043]	0.0002 [0.0066]	0.0027 [0.0060]	0.0357 [0.0206]*
LEVEL: <i>SHRIGHTS</i>	(+)	0.0007 [0.0010]	0.0105 [0.0043]**	0.0015 [0.0029]	0.0186 [0.0173]	0.0011 [0.0017]	0.0124 [0.0055]**	0.0033 [0.0051]	0.0172 [0.0219]
INTERACTION: <i>SHRIGHTS</i> x Fin. Opn. [t-5]	(+)	0 [0.0007]	-0.0003 [0.0022]	-0.0004 [0.0017]	-0.0092 [0.0074]	0.0019 [0.0013]	0.0017 [0.0042]	0 [0.0030]	-0.0156 [0.0099]
N		234	147	174	145	133	82	93	80
Adj. R-sq.		0.11	0.11	0.28	0.08	0.13	0.21	0.11	0.03
<b>Legal/Inst. Variable: ACCOUNT (Accounting Standards)</b>									
Financial Openness [t-5]	(+)	0.0105 [0.0076]	-0.0298 [0.0185]	-0.0233 [0.0150]	-0.0046 [0.0227]	0.0137 [0.0111]	0.0113 [0.0208]	-0.0087 [0.0147]	-0.0391 [0.0388]
LEVEL: <i>ACCOUNT</i>	(+)	-0.0012 [0.0016]	0.0107 [0.0052]**	0.0030 [0.0033]	0.0048 [0.0062]	-0.0017 [0.0026]	0.0084 [0.0080]	0.0045 [0.0047]	0.0114 [0.0099]
INTERACTION: <i>ACCOUNT</i> x Fin. Opn. [t-5]	(+)	-0.0011 [0.0012]	0.005 [0.0031]	0.004 [0.0025]	0.0016 [0.0032]	-0.0023 [0.0018]	-0.0015 [0.0048]	0.0021 [0.0027]	0.008 [0.0062]
N		200	130	157	129	105	66	77	65
Adj. R-sq.		0.11	0.12	0.29	0.05	0.2	0.16	0.09	-0.06

**Notes:** Heteroskedasticity robust standard errors in parentheses. Dependent variable is the average annual growth rate over a five year period. Financial openness is measured by the Chinn-Ito index (*KAOPEN*). Regressions include fixed time effects (estimates not reported). Observations of inflation rates in excess of 100% are dropped from the sample. (\*)[\*\*][\*\*\*] indicates marginal significance at the (10%)[5%][1%] level.

**Table 6: Difference between LDCs and EMGs in terms of the Total effect of a one-unit increase in KAOPEN when the dependent variable is SMTV**

		<b>LDC</b>	<b>EMG</b>
[A]	Total effect of KA Openness	-0.0005	0.0042
[B]	$\bar{L}$ ( <i>Legal1</i> )	-0.74	-0.28
[C]	Threshold level of <i>Legal1</i>	-0.69	
[A]	Total effect of KA Openness	-0.0018	0.0014
[B]	$\bar{L}$ ( <i>Corrupt</i> )	49.27	54.73
[C]	Threshold level of <i>Corrupt</i>	52.3	
[A]	Total effect of KA Openness	-0.0015	0.0005
[B]	$\bar{L}$ ( <i>LAO</i> )	50.85	55.76
[C]	Threshold level of <i>LAO</i>	54.5	
[A]	Total effect of KA Openness	0.0023	0.0070
[B]	$\bar{L}$ ( <i>BQ</i> )	48.66	56.44
[C]	Threshold level of <i>BQ</i>	44.8	
[A]	Total effect of KA Openness	0.0053	-
[B]	$\bar{L}$ ( <i>Legal2</i> )	-0.77	-
[C]	Threshold level of <i>Legal2</i>	-1.45	

Notes: “Total Effect” [A] indicates the total effect of a one-unit increase in *KAOPEN* when the legal/institutional variable takes the value of the average in the subsample group ( $\bar{L}$ , shown in [B]). The estimation model is based on equation (1) using the data of the LDC subgroup for the regressions with *LEGAL1* legal variables and of the LDC/EMG subgroup for the regressions with *LEGAL2*. Rows [C] show the threshold level of the legal variable above which the capital account openness has a positive impact on financial development. For the analysis with *LEGAL2*, there is no distinction between LDC and EMG due to data availability, but there is a subgroup LDC/EMG.



**Table 7: Determinants of Capital Account and Trade Openness**  
 FULL, LDC, and EMG: Five year panels, 1980-2000

Dependent Variable:	Pred. Sign	Financial Openness ( <i>t</i> )			Trade Openness ( <i>t</i> )		
		(1) Full	(2) LDC	(3) EMG	(4) Full	(5) LDC	(6) EMG
Financial Openness ( <i>t-5</i> )	+	0.6109 [0.0573]***	0.5582 [0.0788]***	0.4074 [0.1214]***	-0.0001 [0.0015]	0.0019 [0.0022]	-0.0005 [0.0028]
Trade Openness ( <i>t-5</i> )	+	2.177 [1.0332]**	2.0171 [1.0772]* <sup>6%</sup>	2.3265 [2.0107]	0.5938 [0.0794]***	0.5633 [0.0857]***	0.5746 [0.0940]***
Avg. Budget Surplus ( <i>t-1/t-5</i> )	+	0.0408 [0.0153]***	0.0534 [0.0180]***	0.0608 [0.0303]**	0.0002 [0.0005]	0.0002 [0.0007]	0.0002 [0.0006]
Avg. Total reserves ( <i>t-1/t-5</i> )	+	-0.0064 [0.0246]	0.0022 [0.0309]	0.0073 [0.0410]			
Avg. GDP per capita ( <i>t-1/t-5</i> )	+	0.3187 [0.0960]***	0.2157 [0.1169]*	0.4825 [0.2718]*	0.0174 [0.0035]***	0.0196 [0.0047]***	0.0339 [0.0086]***
Number of Observations		263	184	104	223	151	82
Adjusted R <sup>2</sup>		0.60	0.44	0.39	0.75	0.63	0.70

Notes: Robust standard errors in brackets. \* significant at 10%; \*\* significant at 5%; \*\*\* significant at 1%. Budget surplus, total reserves, and GDP per capita are included at the average over t-1 through t-5. Constant and regional dummies for Asia, Europe, Middle East, and Africa are also included in the regression, but their estimated coefficients are not reported. The regression estimations are conducted in non-overlapping manners with the observations excepted for 1980, 1985, 1990, 1995, and 2000 excluded.

**Table 8: Two-Stage Least Squares Analysis**  
**Instrumented by per capita output, budget balance, and trade openness ¶**  
**LEGAL1 (General Legal/Institutional Development)**  
 FULL, LDC, and EMG: Five year panels, 1980-2000

	Pred sign	FULL				LDC				EMG			
		Private Credit [1]	Stock Mkt Capital'n [2]	Stock Mkt Total Value [3]	Stock Mkt Turnover [4]	Private Credit [5]	Stock Mkt Capital'n [6]	Stock Mkt Total Value [7]	Stock Mkt Turnover [8]	Private Credit [9]	Stock Mkt Capital'n [10]	Stock Mkt Total Value [11]	Stock Mkt Turnover [12]
<b>Legal/Inst. Variable: LEGAL1</b>													
Financial Openness [t-5]	(+)	0.0024 [0.0031]	0.0057 [0.0061]	0.002 [0.0052]	-0.0033 [0.0107]	0 [0.0033]	0.0187 [0.0094]*	0.0212 [0.0076]***	0.0081 [0.0126]	0.0012 [0.0037]	0.0109 [0.0074]	0.0173 [0.0066]**	-0.0028 [0.0254]
LEVEL: LEGAL1	(+)	0.0022 [0.0016]	0.0041 [0.0047]	0.0033 [0.0025]	-0.0052 [0.0123]	0.0006 [0.0025]	0.0265 [0.0092]***	0.0117 [0.0058]**	-0.0182 [0.0251]	0.0052 [0.0042]	0.0199 [0.0089]**	0.0089 [0.0053]*	-0.021 [0.0284]
INTERACT.: LEGAL1x Fin. Open. [t-5]	(+)	0.0007 [0.0010]	0.003 [0.0024]	0.0041 [0.0022]*	0.0061 [0.0053]	-0.0003 [0.0015]	0.0044 [0.0051]	0.0113 [0.0037]***	0.0233 [0.0143]	0.0036 [0.0024]	0.0053 [0.0039]	0.0096 [0.0032]***	0.0224 [0.0150]
Financial Deepening [t-5]	(-)	-0.0109 [0.0134]	-0.0426 [0.0291]	0.0784 [0.0901]	-0.0448 [0.0408]	0.0257 [0.0162]	-0.0805 [0.0327]**	-0.1184 [0.0776]	-0.0197 [0.0582]	-0.0133 [0.0246]	-0.0617 [0.0298]**	-0.0933 [0.0665]	-0.0228 [0.0688]
Inflation [t-5]	(-)	-0.0218 [0.0098]**	-0.0522 [0.0223]**	-0.0053 [0.0290]	-0.0068 [0.1005]	-0.005 [0.0102]	-0.0509 [0.0293]*	0.0196 [0.0319]	-0.0025 [0.1243]	-0.0312 [0.0160]*	-0.0557 [0.0279]*	0.0236 [0.0391]	-0.0433 [0.2138]
N		189	140	152	138	117	77	83	75	70	66	70	65
R-sq.		0.17	0.14	0.27	0.09	0.17	0.29	0.04	0.1	0.28	0.36	0.1	0.15

**Notes:** Point estimates from OLS, heteroskedasticity robust standard errors in parentheses. Dependent variable is the average annual growth rate over a five year period. Financial openness is measured by the Chinn-Ito index (*KAOPEN*). Regressions include fixed time effects (estimates not reported). Observations of inflation rates in excess of 100% are dropped from the sample. (\*)[\*\*][\*\*\*] indicates marginal significance at the (10%)[5%][1%] level.

¶ - The variable for financial openness lagged five years (*KAOPEN<sub>t-5</sub>*) is instrumented by per capita output and budget balance, both of which are included as the average over the five years prior to five years before each window (i.e., t-10 through t-6 since the IV is already lagged five years), regional dummies, and the level of financial openness and trade openness, both of which are lagged ten years.

**Table 9: Order of Financial Liberalization**  
**(LEGAL1, Corruption, Law and Order, and Bureaucracy Quality)**  
 FULL, LDC, and EMG: Five year panels, 1980-2000

		FULL				LDC				EMG			
	Pred sign	Private Credit	Stock Mkt Capital'n	Stock Mkt Total Val.	Stock Mkt Turnover	Private Credit	Stock Mkt Capital'n	Stock Mkt Total Val.	Stock Mkt Turnover	Private Credit	Stock Mkt Capital'n	Stock Mkt Total Val.	Stock Mkt Turnover
		[1]	[2]	[3]	[4]	[5]	[6]	[7]	[8]	[9]	[10]	[11]	[12]
<b>Legal/Inst. Variable: LEGAL1 (General Level of Legal/Institutional Development)</b>													
Other type of Financial Development ( $t-5$ )	+/-	0.0033 [0.0064]	0.0282 [0.0286]	-0.0028 [0.0336]	0.0133 [0.0307]	-0.0034 [0.0070]	0.1306 [0.0646]**	0.1041 [0.0499]**	0.0625 [0.0554]	0.0033 [0.0089]	0.0701 [0.0710]	0.0862 [0.0578]	0.0455 [0.0660]
N		169	169	199	166	97	97	111	94	85	86	96	84
Adj. R-sq.		0.12	0.11	0.27	0.02	0.07	0.27	0.22	-0.02	0.15	0.21	0.21	-0.01
<b>Legal/Inst. Variable: CORRUPT (Corruption)</b>													
Other type of Financial Development ( $t-5$ )	+/-	0.0025 [0.0067]	0.0285 [0.0281]	-0.0031 [0.0333]	0.0189 [0.0310]	-0.0046 [0.0078]	0.1262 [0.0610]**	0.1008 [0.0470]**	0.0747 [0.0544]	0.0013 [0.0099]	0.0642 [0.0621]	0.0872 [0.0514]*	0.0746 [0.0622]
N		169	169	199	166	97	97	111	94	85	86	96	84
Adj. R-sq.		0	0.14	0.11	0.27	0.07	0.3	0.21	-0.02	0.12	0.26	0.21	-0.01
<b>Legal/Inst. Variable: LAO (Law and Order)</b>													
Other type of Financial Development ( $t-5$ )	+/-	0.0039 [0.0064]	0.0329 [0.0291]	-0.0022 [0.0339]	0.0136 [0.0309]	-0.0008 [0.0064]	0.142 [0.0640]**	0.1023 [0.0499]**	0.0485 [0.0548]	0.0076 [0.0086]	0.0989 [0.0709]	0.0927 [0.0562]	0.0333 [0.0720]
N		169	169	199	166	97	97	111	94	85	86	96	84
Adj. R-sq.		0.11	0.12	0.27	0.01	0.08	0.29	0.17	-0.04	0.12	0.23	0.16	-0.02
<b>Legal/Inst. Variable: BQ (Bureaucracy Quality)</b>													
Other type of Financial Development ( $t-5$ )	+/-	0.0026 [0.0066]	0.0269 [0.0288]	-0.0050 [0.0337]	0.0102 [0.0318]	-0.0025 [0.0070]	0.1292 [0.0615]**	0.0981 [0.0532]*	0.0396 [0.0582]	0.0032 [0.0103]	0.0776 [0.0607]	0.0684 [0.0572]	0.0236 [0.0702]
N		169	169	199	166	97	97	111	94	85	86	96	84
Adj. R-sq.		0.12	0.10	0.26	0.01	0.06	0.25	0.21	-0.02	0.08	0.17	0.19	0.01

**Notes:** Point estimates from OLS, heteroskedasticity robust standard errors in parentheses. Dependent variable is the average annual growth rate over a five year period. Financial openness is measured by the Chinn-Ito index (*KAOPEN*). Regressions include fixed time effects (estimates not reported). Observations of inflation rates in excess of 100% are dropped from the sample. (\*)[\*\*][\*\*\*] indicates marginal significance at the (10%)[5%][1%] level.

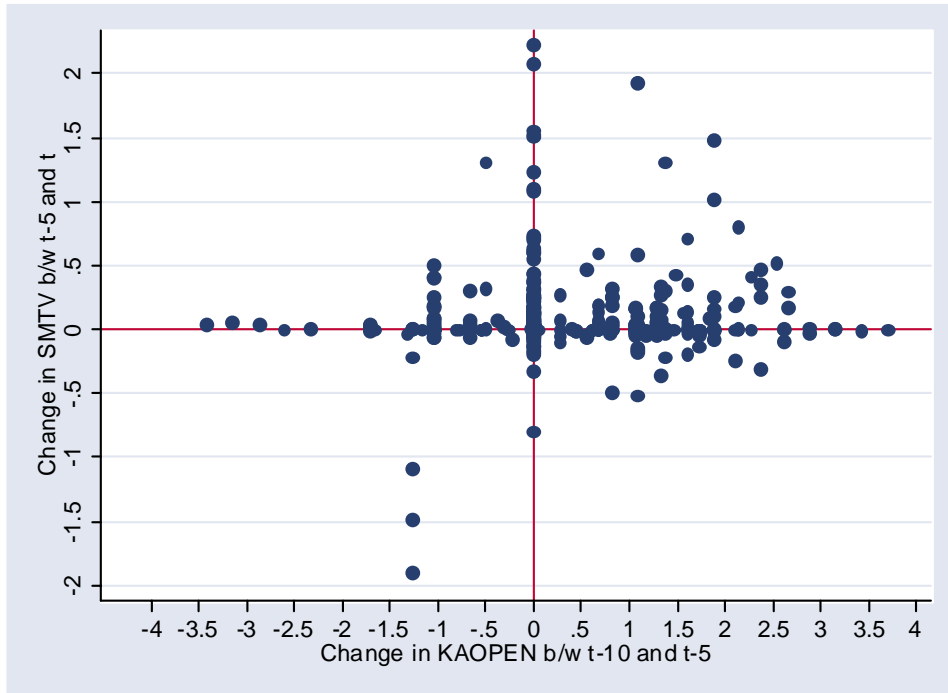
**Table 10: Relationship between Different Types of Financial Development  
(Controlled for LEGAL1, Corruption, Law and Order, and Bureaucracy Quality)  
FULL, LDC, and EMG: Five year panels, 1980-2000**

		FULL				LDC				EMG			
	Pred sign	Private Credit [1]	Stock Mkt Capital'n [2]	Stock Mkt Total Val. [3]	Stock Mkt Turnover [4]	Private Credit [5]	Stock Mkt Capital'n [6]	Stock Mkt Total Val. [7]	Stock Mkt Turnover [8]	Private Credit [9]	Stock Mkt Capital'n [10]	Stock Mkt Total Val. [11]	Stock Mkt Turnover [12]
<b>Legal/Inst. Variable: LEGAL1 (General Level of Legal/Institutional Development)</b>													
Other type of Financial Development ( $t/t-5$ )	+/-	0.0410 [0.0504]	0.1770 [0.2149]	0.0443 [0.1745]	-0.1059 [0.2432]	0.0909 [0.0402]**	0.707 [0.2445]***	0.5064 [0.3314]	-0.1036 [0.6453]	0.0609 [0.0440]	-0.046 [0.1108]	-0.0467 [0.1483]	0.193 [0.4245]
N		165	165	195	162	93	93	107	90	84	84	94	82
Adj. R-sq.		0.12	0.10	0.27	0.02	0.13	0.24	0.18	-0.03	0.17	0.2	0.18	-0.01
<b>Legal/Inst. Variable: Corrupt (Corruption)</b>													
Other type of Financial Development ( $t/t-5$ )	+/-	0.0386 [0.0502]	0.1615 [0.2187]	0.0403 [0.1758]	-0.0887 [0.2467]	0.0892 [0.0405]**	0.6743 [0.2571]**	0.4857 [0.3346]	-0.1423 [0.6507]	0.0559 [0.0453]	0.3541 [0.2223]	0.3607 [0.3242]	-0.0166 [0.6916]
N		165	165	195	162	93	93	107	90	84	84	94	82
Adj. R-sq.		0.13	0.1	0.27	0.02	0.12	0.26	0.17	-0.03	0.14	0.24	0.18	-0.02
<b>Legal/Inst. Variable: LAO (Law and Order)</b>													
Other type of Financial Development ( $t/t-5$ )	+/-	0.0403 [0.0499]	0.1702 [0.2136]	0.0395 [0.1744]	-0.1103 [0.2396]	0.0933 [0.0411]**	0.7611 [0.2352]***	0.5083 [0.3245]	-0.0504 [0.5949]	0.0629 [0.0443]	0.4432 [0.2053]**	0.434 [0.3160]	-0.1553 [0.7121]
N		165	165	195	162	93	93	107	90	88	84	84	94
Adj. R-sq.		0.12	0.11	0.27	0.01	0.14	0.25	0.13	-0.04	0.2	0.15	0.2	0.14
<b>Legal/Inst. Variable: BQ (Bureaucracy Quality)</b>													
Other type of Financial Development ( $t/t-5$ )	+/-	0.0428 [0.0501]	0.1864 [0.2133]	0.0525 [0.1724]	-0.1068 [0.2383]	0.0872 [0.0415]**	0.7164 [0.2352]***	0.4687 [0.3265]	-0.1275 [0.6783]	0.0857 [0.0515]	-0.1553 [0.0795]*	-0.0856 [0.0721]	0.2054 [0.2639]
N		165	165	195	162	93	93	107	90	84	84	94	82
Adj. R-sq.		0.12	0.09	0.26	0.01	0.12	0.22	0.18	-0.03	0.12	0.18	0.18	0.01

**Notes:** Point estimates from OLS, heteroskedasticity robust standard errors in parentheses. Dependent variable is the average annual growth rate over a five year period. Financial openness is measured by the Chinn-Ito index (*KAOPEN*). Regressions include fixed time effects (estimates not reported). Observations of inflation rates in excess of 100% are dropped from the sample. (\*)[\*\*][\*\*\*] indicates marginal significance at the (10%)[5%]{1%} level.

**Figure 1: Correlation between the Change in *KAOPEN* and the change in *SMTV* (with a five-year lag)**

**(a) When *LEGAL1* is greater than the threshold hold level**



**(b) When *LEGAL1* is below the threshold hold level**

