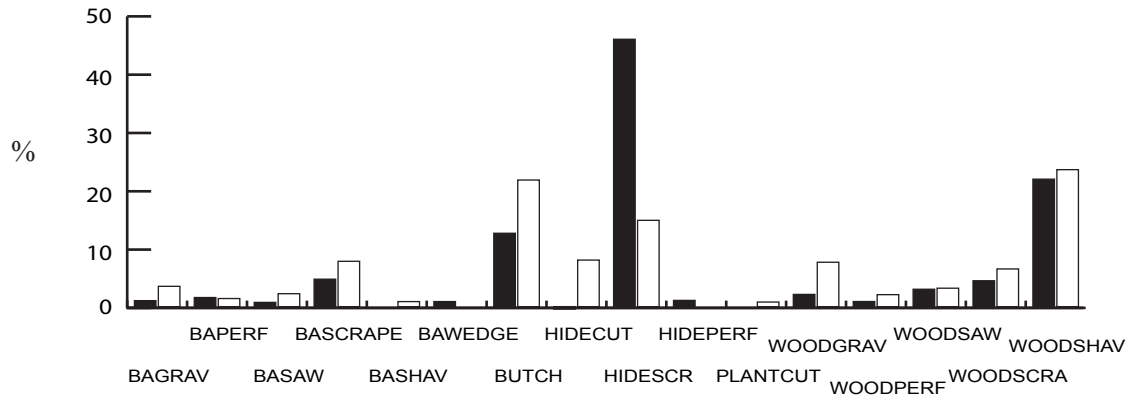
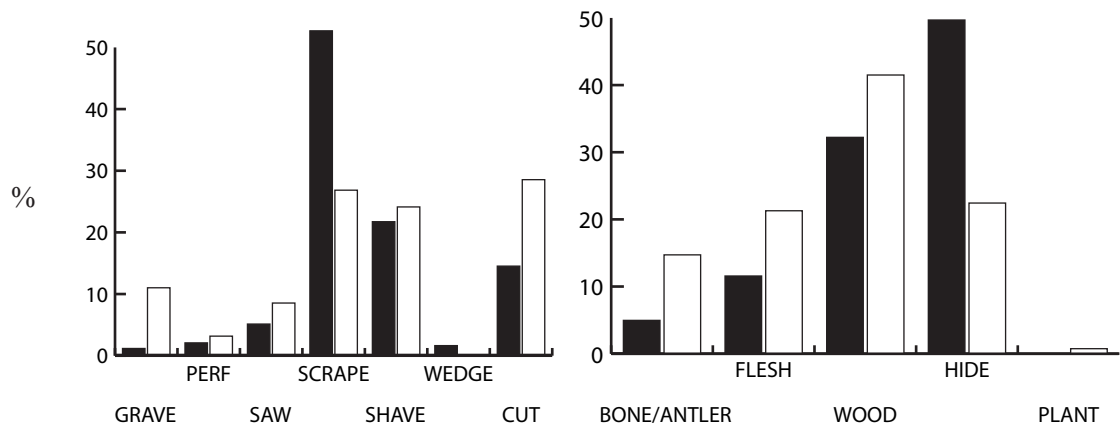


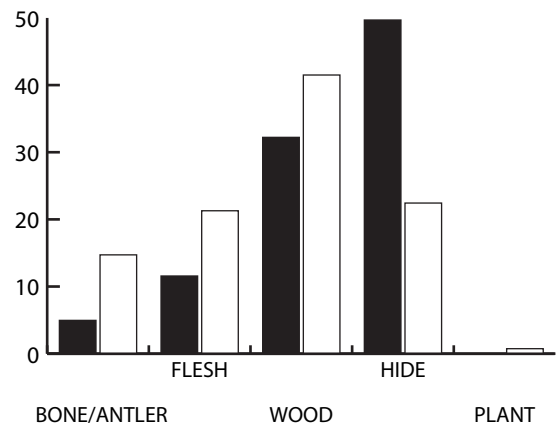
(a) gross analytical categories



(b) UE functions



(c) work actions



(d) worked materials

UE = Utilized Elements, INDET = indeterminate items, UU = shaped but unused items, BPC = lithic bipolar core, CORE = lithic freehand core, PF = lithic projectile point manufacturing failure, BAGRAV = bone/antler graver, BAPERF = bone/antler perforator, BASAW = bone/antler saw, BASCRAPE = bone/antler scraper, BASHAV = bone/antler shaver, BAWEDGE = bone/antler wedge, BUTCH = butchery implement, HIDE CUT = hide-cutter, HIDE SCR = hide scraper, HIDE PERF = hide perforator, PLANT CUT = plant cutter, WOOD GRAV = wood graver, WOOD SAW = wood saw, WOOD SCRA = wood scraper, WOOD SHAV = wood shaver, GRAVE = graver, PERFORM = perforator, SAW = saw, SCRAPE = scrape, SHAVE = shave, WEDGE = wedge, CUT = cut, BONE/ANTLER = bone and/or antler, FLESH = yielding animal tissue, WOOD = wood, HIDE = hide, PLANT = vegetal tissue

FIGURE 33.
Frequency of Utilized Elements Within Sites