

LINE 1

LINE 1A

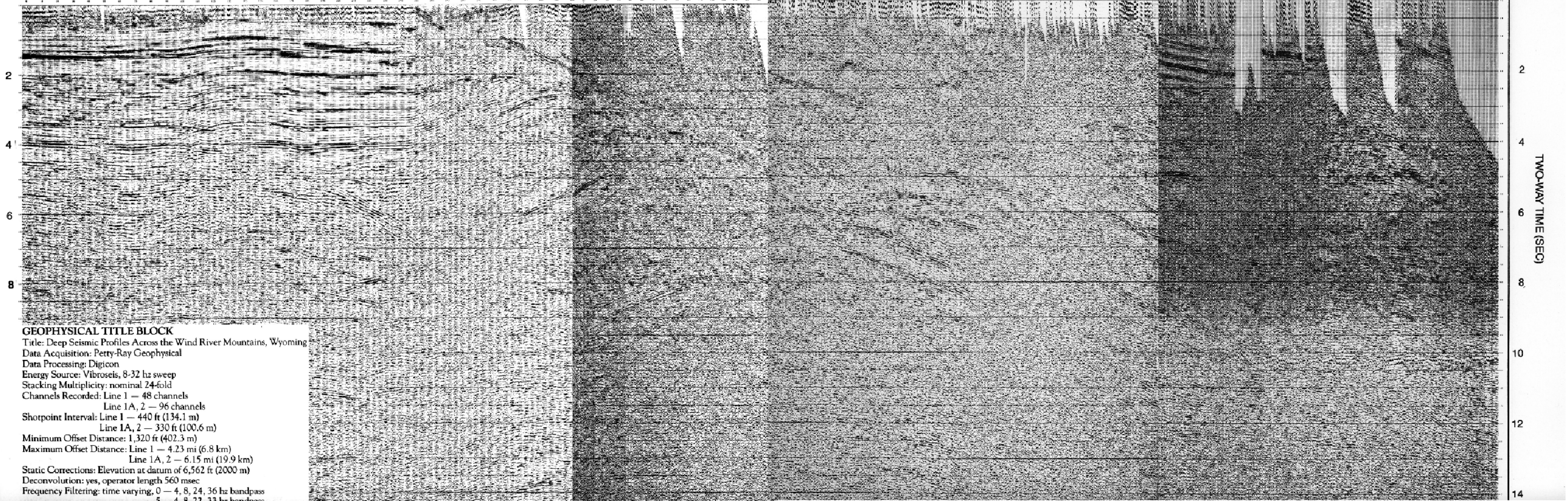
LINE 2

GREEN RIVER BASIN

WIND RIVER MOUNTAINS

WIND RIVER BASIN

V. P. NO.



GEOPHYSICAL TITLE BLOCK
 Title: Deep Seismic Profiles Across the Wind River Mountains, Wyoming
 Data Acquisition: Petty-Ray Geophysical
 Data Processing: Digicon
 Energy Source: Vibroseis, 8-32 hz sweep
 Stacking Multiplicity: nominal 24-fold
 Channels Recorded: Line 1 - 48 channels
 Line 1A, 2 - 96 channels
 Shotpoint Interval: Line 1 - 440 ft (134.1 m)
 Line 1A, 2 - 330 ft (100.6 m)
 Minimum Offset Distance: 1,320 ft (402.3 m)
 Maximum Offset Distance: Line 1 - 4.23 mi (6.8 km)
 Line 1A, 2 - 6.15 mi (19.9 km)
 Static Corrections: Elevation at datum of 6,562 ft (2000 m)
 Deconvolution: yes, operator length 560 msec
 Frequency Filtering: time varying, 0 - 4, 8, 24, 36 hz bandpass
 5 - 4, 8, 22, 33 hz bandpass

TWO-WAY TIME (SEC)

2

4

6

8

2

4

6

8

10

12

14

100

200

FRONTAL FAULT

300

100

200

300

400

500

100

200