

Display Layer Projections and Reproject Layers

BETHANY C. PRATT
GEOG 590
WINTER 2010
PORTLAND STATE UNIVERSITY
GEOFFREY DUH

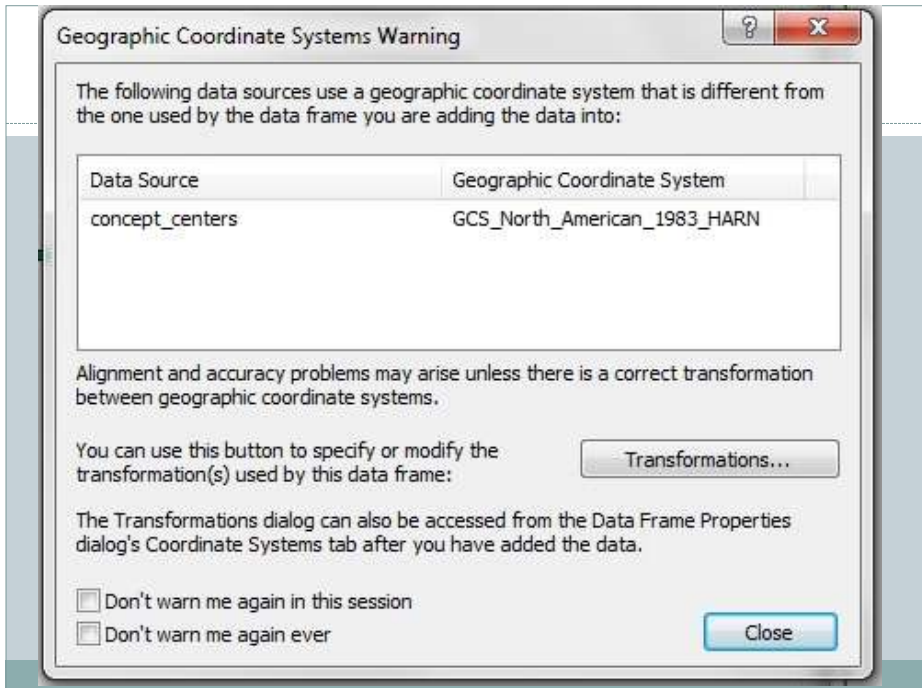
Geographic Coordinate Systems

Continental and World

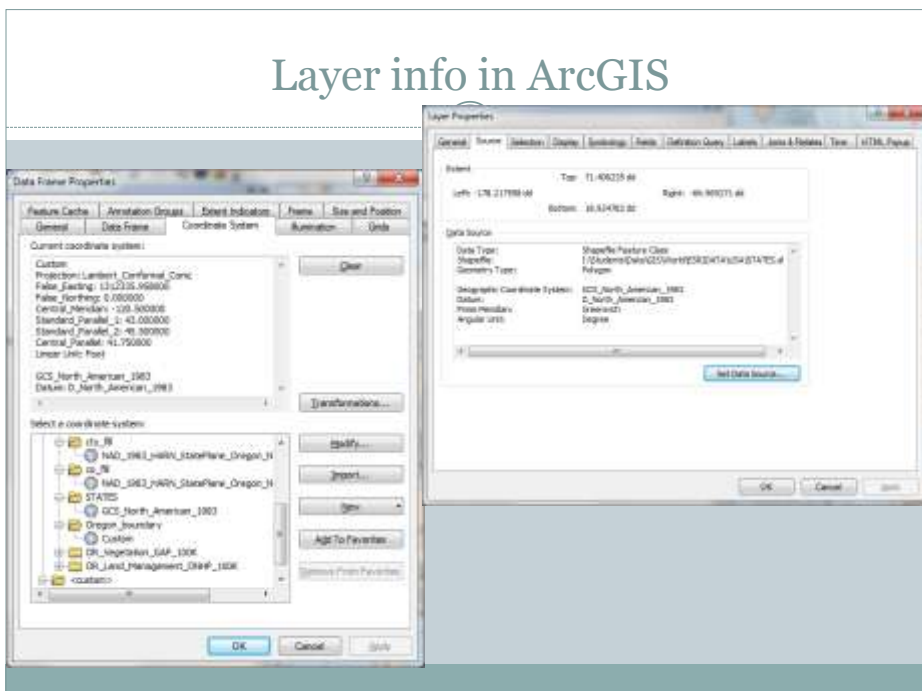
- NAD 83
- NAD 27
- WGS 72
- GRS 80
- Clark 66

NAD 83 – US Specific

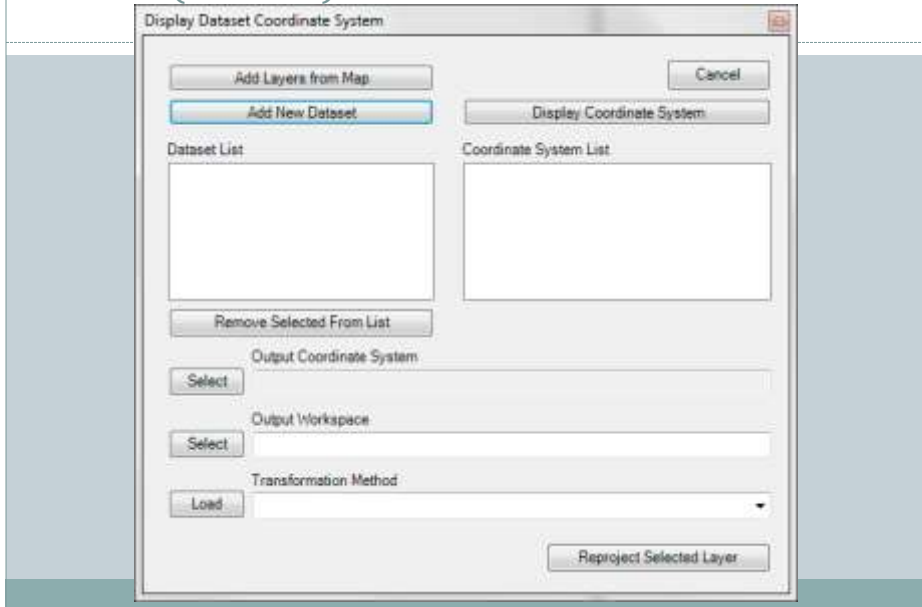
- HARN Feet
- HARN Intl Feet
- HARN Meters
- HPGN Feet
- HPGN Intl Feet
- HPGN Meters



Layer info in ArcGIS



A New (Better!) Interface



Code Example – get Coordinate System

```

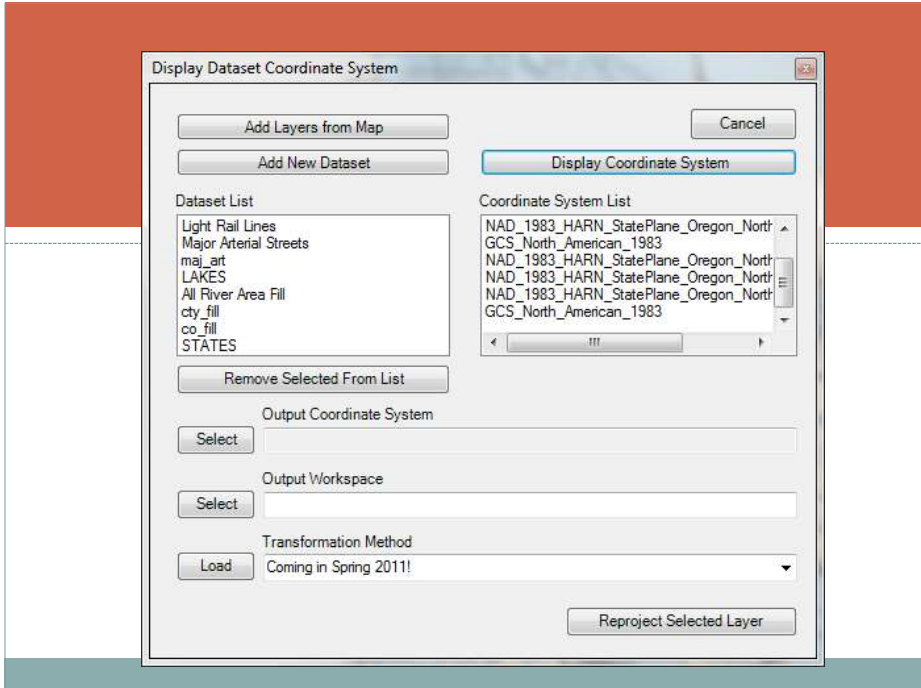
'load layer coordinate systems to listcoord listbox
Private Sub BtnCoord_Click(ByVal sender As System.Object, ByVal e As
System.EventArgs) Handles BtnCoord.Click
    'first, declare the objects in the listcoord list
    ListCoord.Items.Clear()
    Dim i As Integer
    Dim layercount As Integer
    Dim pLayer As IFeatureLayer
    Dim pMap As IMap = My.Document.FocusMap
    Dim geoDataSet As IGeoDataset
    Dim pSgRef As ISpatialReference
    layercount = LetData.Items.Count
    'cycle thru each item, pulling the spatial reference information from each
    'then add the information to the listcoord listbox
    Try
        If layercount = 0 Then
            Exit Sub
            MsgBox("Add Layers to the Data List")
        End If
        If layercount > 0 Then
            For i = 0 To layercount - 1
                'get the geodataset referenced from the listbox list
                pLayer =
                pMap.Layer(GetLayerIndexByName(LetData.Items.Item(i)))
                'get the geoDataset from the FeatureClass
                geoDataSet = pLayer.FeatureClass
                'get the spatial reference of the geoDataset
                pSgRef = geoDataSet.SpatialReference
                Dim pspatialreference As String = pSgRef.Name
                ListCoord.Items.Add(pspatialreference)
            Next
        End If
    Catch ex As Exception
        MsgBox("BtnCoord_Click error: ", ex.Message)
    End Try
End Sub

```

Code Example – output workspace

```
Private Sub BtnWork_Click(ByVal sender As System.Object, ByVal e As
System.EventArgs) Handles BtnWork.Click
    'code snippets/help from:
    http://forums.esri.com/Thread.asp?c=93&f=993&t=277078
    Dim pGxdialog As IGxDialoG = New GxDialoG
    'the container has a known error and displays EVERYTHING, not just
    folders/geodatabases
    Dim pfilter As New GxFilterContainers
    With pGxdialoG
        .StartingLocation = "C:\users\students"
        .AllowMultiSelect = False
        .Title = "Select Directory"
        .ButtonCaption = "Select"
        .ObjectFilter = pfilter
    End With
    Dim outPath As String
    If pGxdialoG.DoModalSave(My.ArcMap.Application.hWnd) Then
        If pGxdialoG.FinalLocation.Name.Contains(".") Then
            MsgBox("Please select a folder")
            Exit Sub
        End If
        outPath = pGxdialoG.FinalLocation.FullName & "\" & pGxdialoG.Name
        If outPath = Nothing Then
            Exit Sub
        End If
        TxtWork.Text = outPath
    End If
End Sub
```

Demonstration



Discover...

**YOUR FILES'
COORDINATE SYSTEMS
TODAY!**