



# Deleting Fabric Parcels and Plans

## SDK sample Add-In

**ArcGIS Parcel Editor Development Team**

**October, 2010**

### Overview

This Add-in will be useful for the following:

- Deleting a large number of parcels from the parcel fabric.
- Finding and optionally deleting empty plans.
- Developing an Add-in for the Parcel Editor.

There are times when you may want to delete a large number of parcels. For example, during a data migration project while performing a series of batch imports, there may be loads that result in incorrect system attributes. The field calculator is not available on system attribute fields on the parcel fabric, and the delete command that comes installed with the Parcel Editor at version 10.0 handles smaller selections. Rather than creating a new empty fabric, and re-starting the entire series of loads, a better approach is to delete the incorrect parcels, fix the source data that had problems, and re-load the corrected subset.

Every parcel belongs to a fabric Plan. After deleting many parcels it is possible that you'll have a lot of empty plans. You may need to delete one or more of these empty plans. The Delete Empty Plans tool lists the empty plans in the fabric, and lets you choose the ones to delete.

The code provided with this tool is a good starting point for learning how to edit parcel fabric tables using ArcObjects, and for getting a deeper understanding of the fabric's data structure.

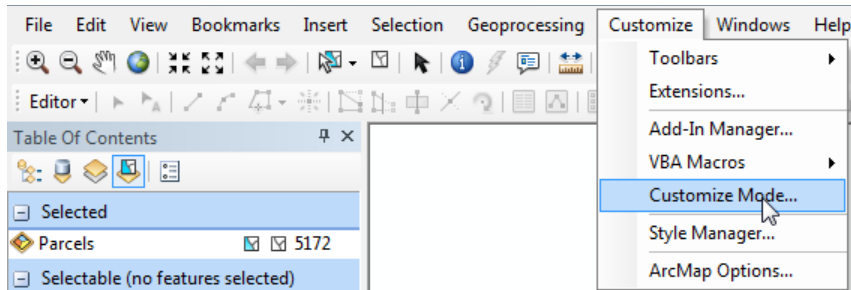
### Installation

This Add-In is called DeleteParcelsAndPlans.esriAddIn. To install this Add-In you can do one of the following:

- Double-click on the file from the *Install* directory to install it for use on your individual machine.
- Copy the file to a shared folder used by your organization and then reference that folder through the Options tab on the Add-In Manager dialog. Deploying the Add-In this way will make it accessible to anyone that can get to the shared folder.

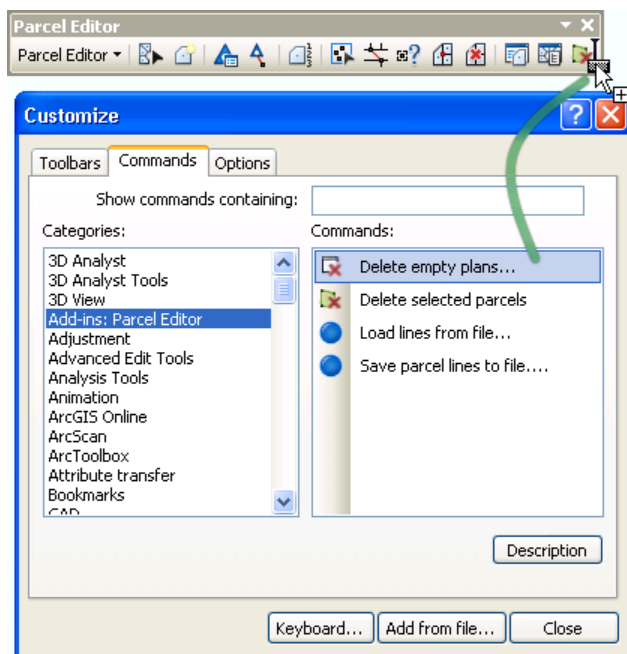
After installing the Add-in, the tools can be placed on any toolbar by using the Customize dialog. You can find the tools in the category called "Add-ins: Parcel Editor"

Step 1:



Step 2:

Drag-and-drop the tool that you want to use onto any toolbar:



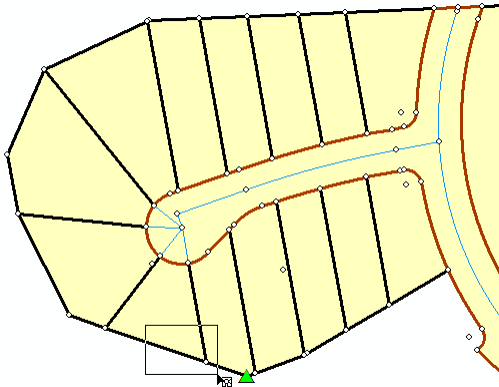
## Using the Parcel Delete Tool

To use the Parcel Delete tool, you need to be in an edit session. (The tool will also work on un-versioned fabrics, but without the ability to Undo the delete.)

- Click Parcel Editor -> Start Editing
- Click the Select Parcel Features tool

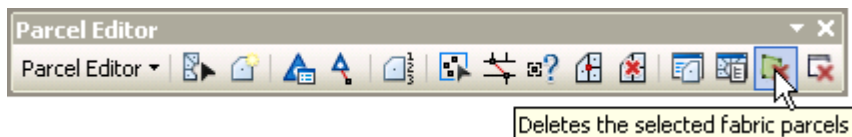


- Drag a selection box around the parcels in the fabric that you want to delete.

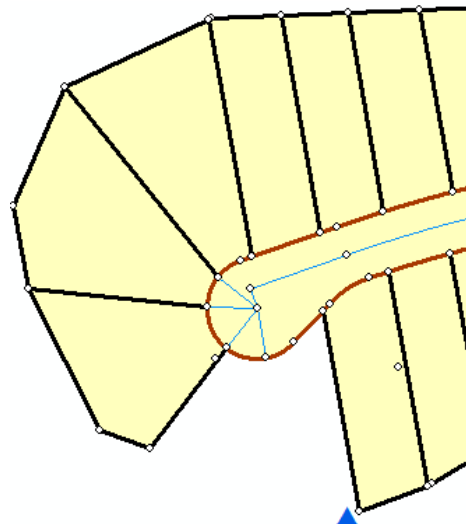


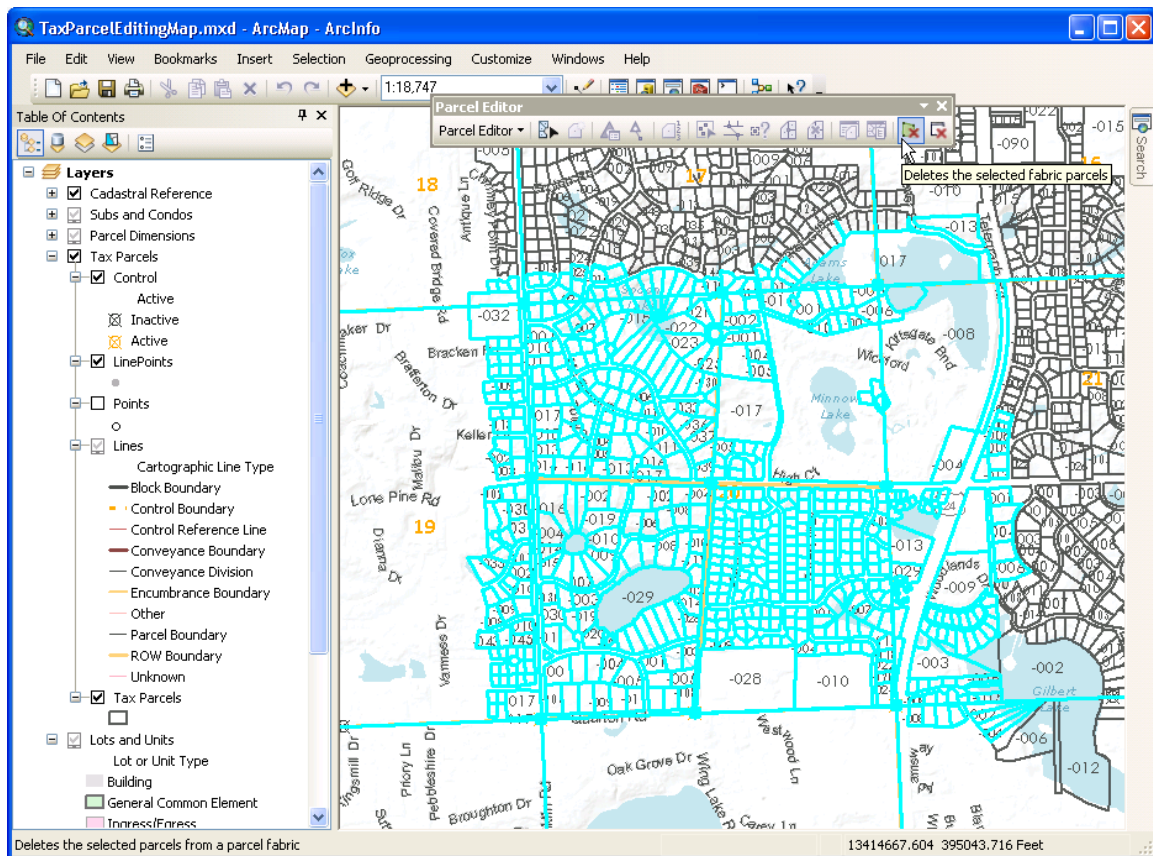
You can also select the parcels from the parcel table or from the Parcel Explorer. You would do this if you needed to delete parcels that were not visible in the map, for example, un-joined parcels.

- Click the Delete button:



The parcel, along with its lines and points are deleted.





When deleting large amounts of data a progress bar is displayed:



The progress bar has been implemented with a cancel tracker.

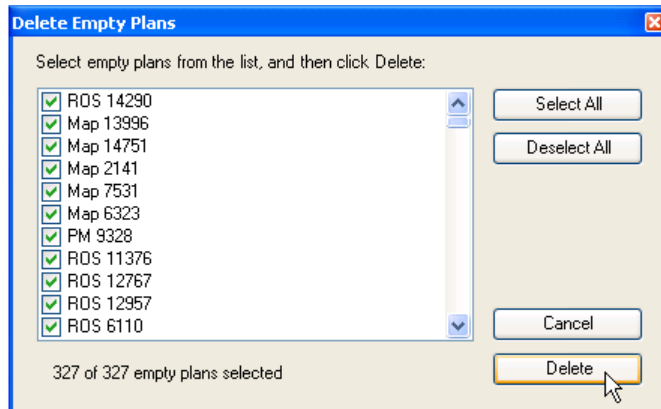
You can click the Cancel button at any time to stop the delete; none of the data that you selected is deleted.

## Using the Delete Empty Plans tool

To use the Delete Empty Plans tool, you need to be in an edit session. (The tool will also work on un-versioned fabrics, but without the ability to Undo the delete.)

- Click Parcel Editor -> Start Editing
- Click the Delete Empty Plans button

A dialog presents a list of the empty Plans. In some cases there may be no empty plans:



- Check the plans that you want to delete, and then click the Delete button.

## Parcel Deletion Information

It is important when using this tool to understand the data model of the parcel fabric. For complete information on the data model, please see the on-line help topic for the [parcel fabric data model](#).

Since each parcel in a fabric is defined by records that span different fabric tables, the deletion of a parcel requires removing records from each of the *parcel* fabric class tables. The related line records that define the parcel need to be deleted from the *lines* fabric class table, and the points at the ends of those lines that are no longer used by any of the remaining parcels also need to be deleted from the fabric *points* table. Also, any *line-points* that belong to a parcel need to be deleted, and any active control point that has its associated point removed should be marked inactive.

When editing parcel fabrics in a multi-user environment, *edit locks* are created for parcels, and these are used to prevent reconcile conflicts. Edit locks are released when the version is posted to default. Whenever an edit is required on a parcel, the system tests whether the parcel has already been locked for edits.

The code for parcel deletion tests if any of the selected parcels are edit-locked. If a parcel is edit-locked then it will not be deleted. For more information on edit locking, please refer to the on-line help topic for [Editing the parcel fabric and versioning](#).